

Respiratory biophysics

Biophysical basis of physical examination

Medical Biophysics II. 20 May, 2026

Miklós Kellermayer

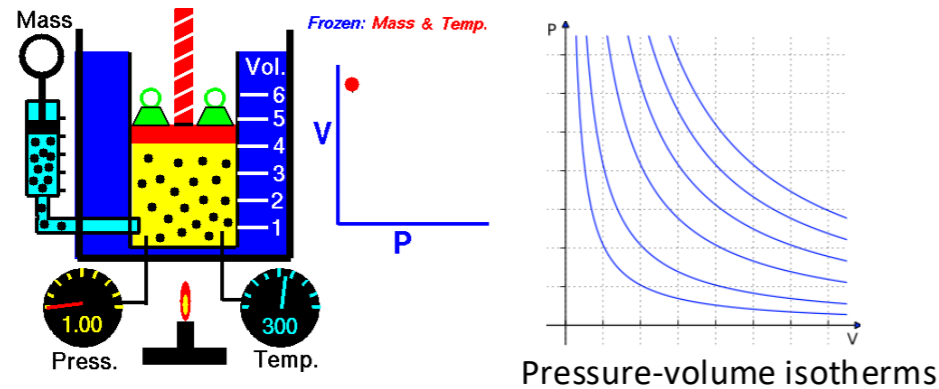
Department of Biophysics and Radiation Biology



SEMMELWEIS
EGYETEM 1769

Relevant physical and physico-chemical laws

1. **Ideal gas law** (derives from Clausius-Clapeyron's, Boyle-Mariotte's, Charles's laws): Relationship between the pressure, volume, temperature and amount of gas.



$$PV = nRT$$

P = pressure (Pa)
 V = volume (m^3)
 n = amount (moles)
 R = gas constant ($8.314 \text{ JK}^{-1}\text{mol}^{-1}$)
 T = absolute temperature (K)

2. **Dalton's law** (John Dalton, 1801): The total pressure exerted by the mixture of non-reactive gases is equal to the sum of the partial pressures of individual gases.

$$P_{total} = \sum_{i=1}^n P_i$$

p_i = partial pressure of the i th gas
 n = number of gases in the mixture
 $[p_i = P_{total} \times r; r = \text{ratio of the gas in the mixture}]$

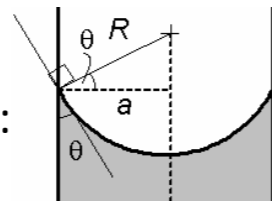
3. **Henry's law** (William Henry, 1803): At a constant temperature, the amount of a given gas that dissolves in a given type and volume of liquid is directly proportional to the partial pressure of that gas in equilibrium with that liquid.

$$p = k_H c$$

p = partial pressure (Pa; atm)
 k_H = Henry's constant (l.atm/mol)
 c = concentration of dissolved gas (mol/l)

4. **Young-Laplace equation**: Describes the capillary pressure difference sustained across the interface between two static fluids (e.g., water, air) due to surface tension.

In a sufficiently narrow tube:

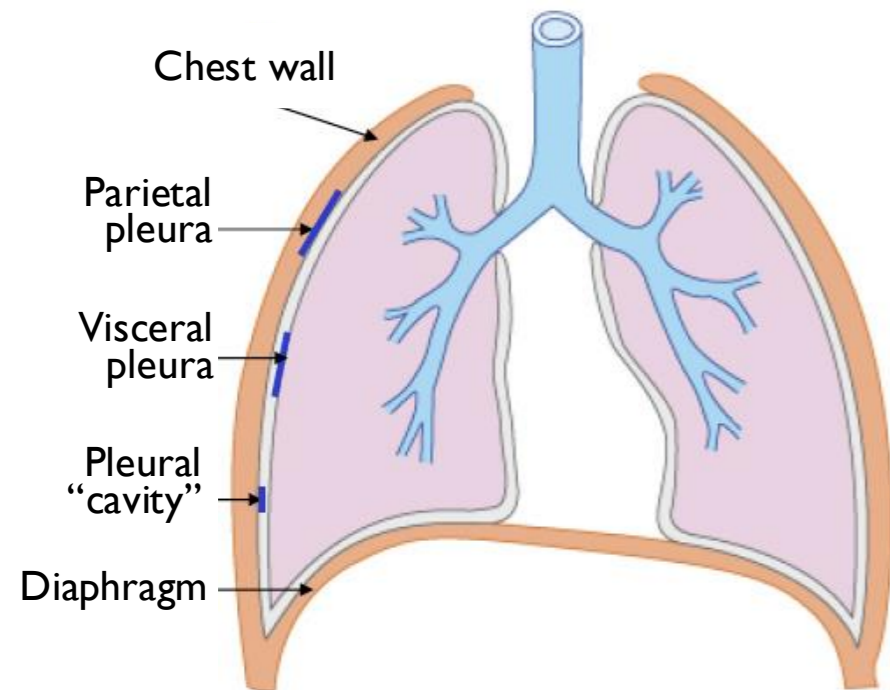


$$\Delta p = \frac{2\gamma}{R}$$

p = pressure (Nm^{-2})
 γ = surface tension ($\text{Nm}^{-1}; \text{Jm}^{-2}$)
 R = radius of curvature

Simplified respiratory system

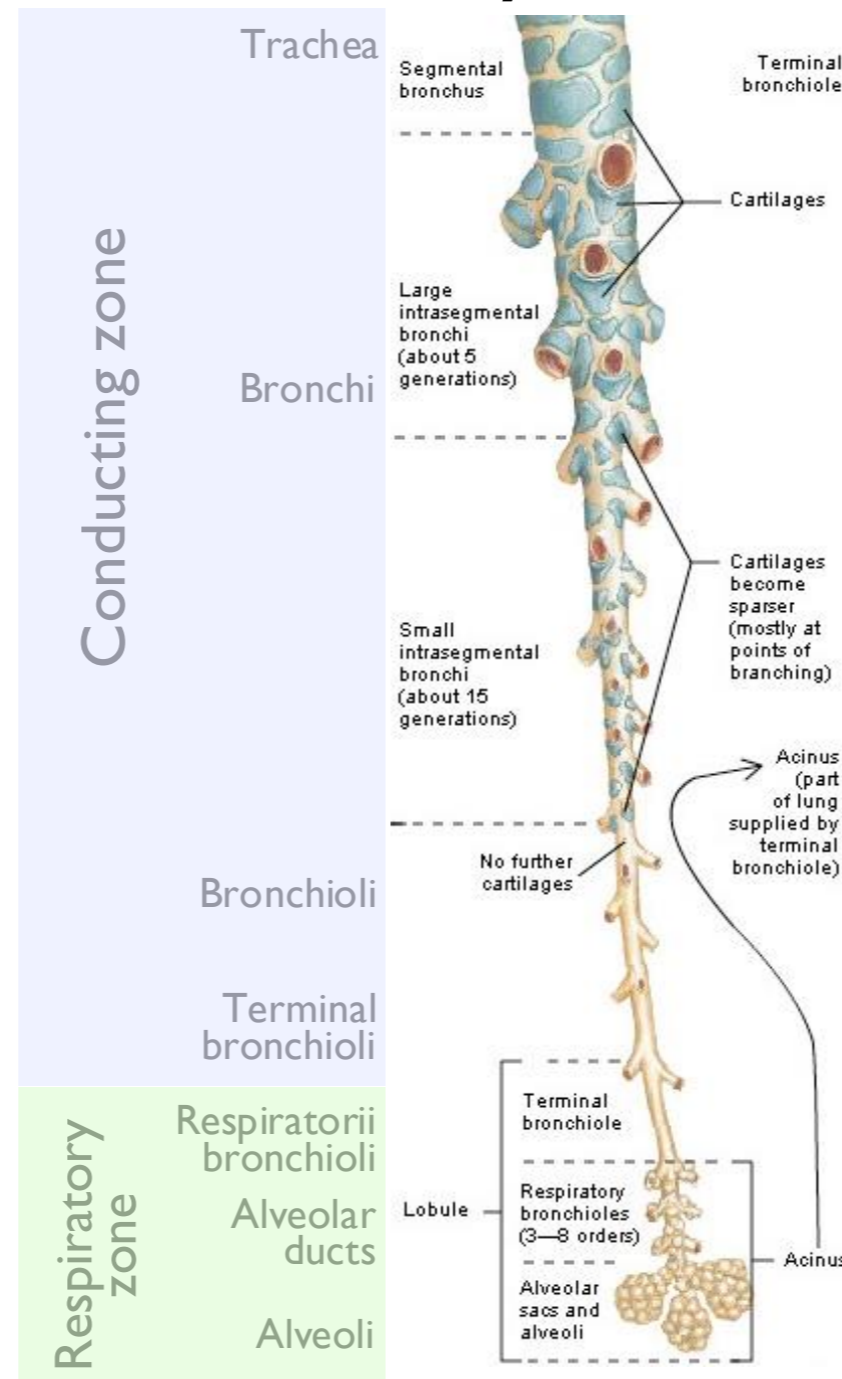
I. Box



- Intrapulmonary pressure (P_{pulm}): fluctuates around external (atmospheric) pressure
- Intrathoracic or intrapleural pressure (P_{pl}): “negative” (balance between atmospheric pressure, adhesional and contractile forces)
- Transmural (transpulmonary) pressure (P_{tm}): pressure difference across chest wall

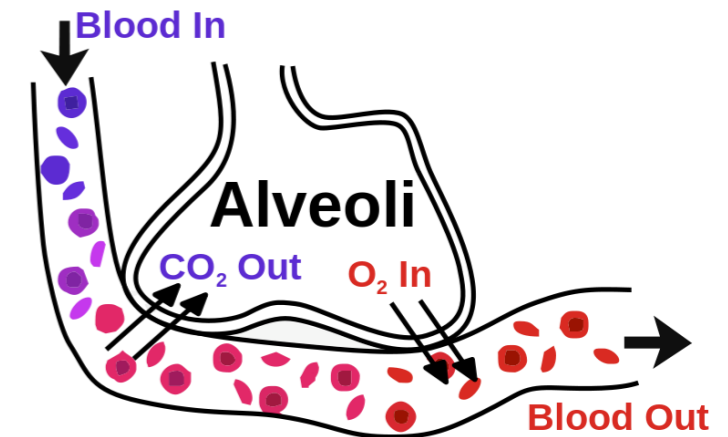
• *Pneumothorax!*

2. Tube system



- 23-25 dichotomic divisions
- Laws of fluid flow (Hagen-Poiseuille!)

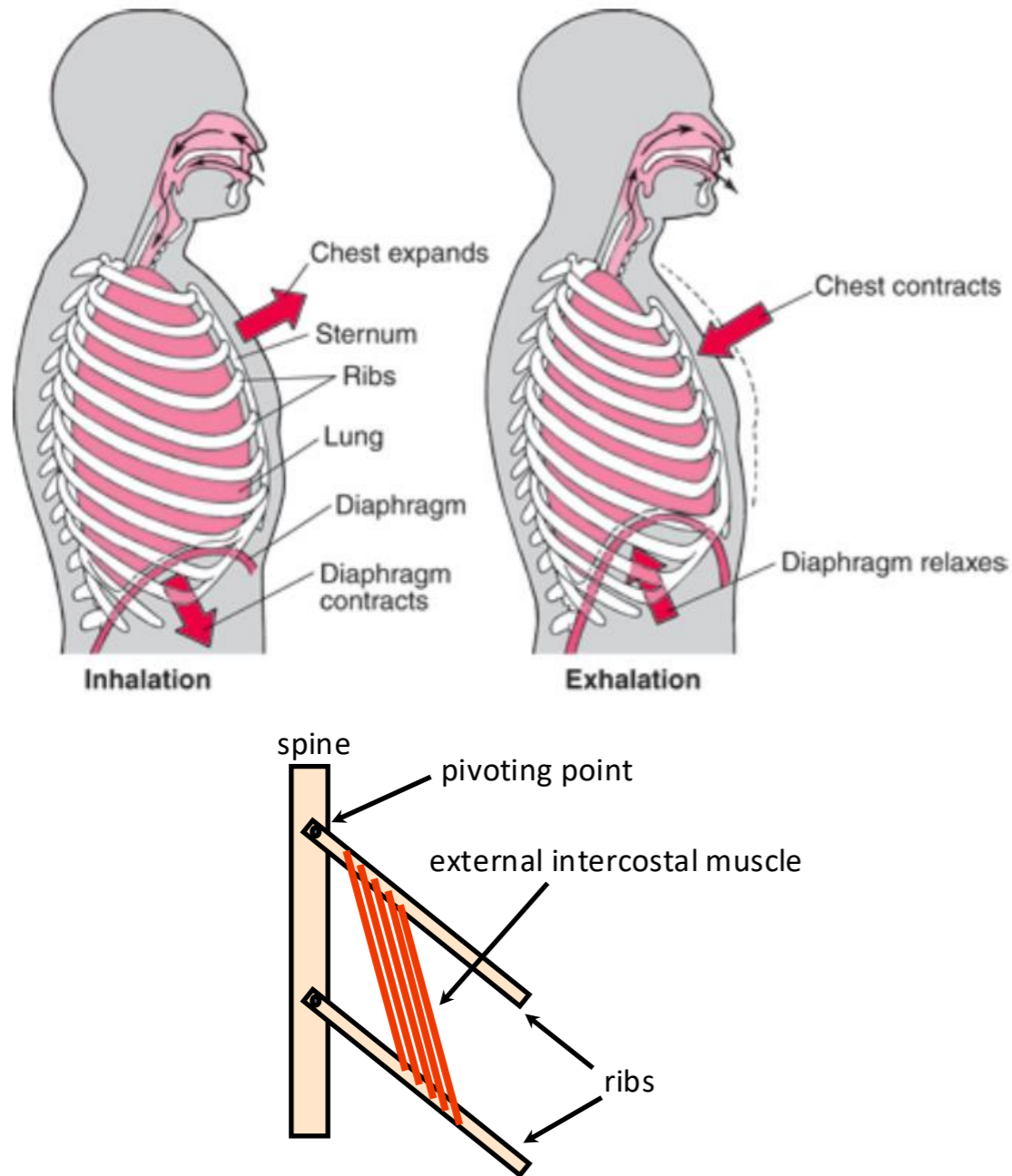
3. Gas exchange surface



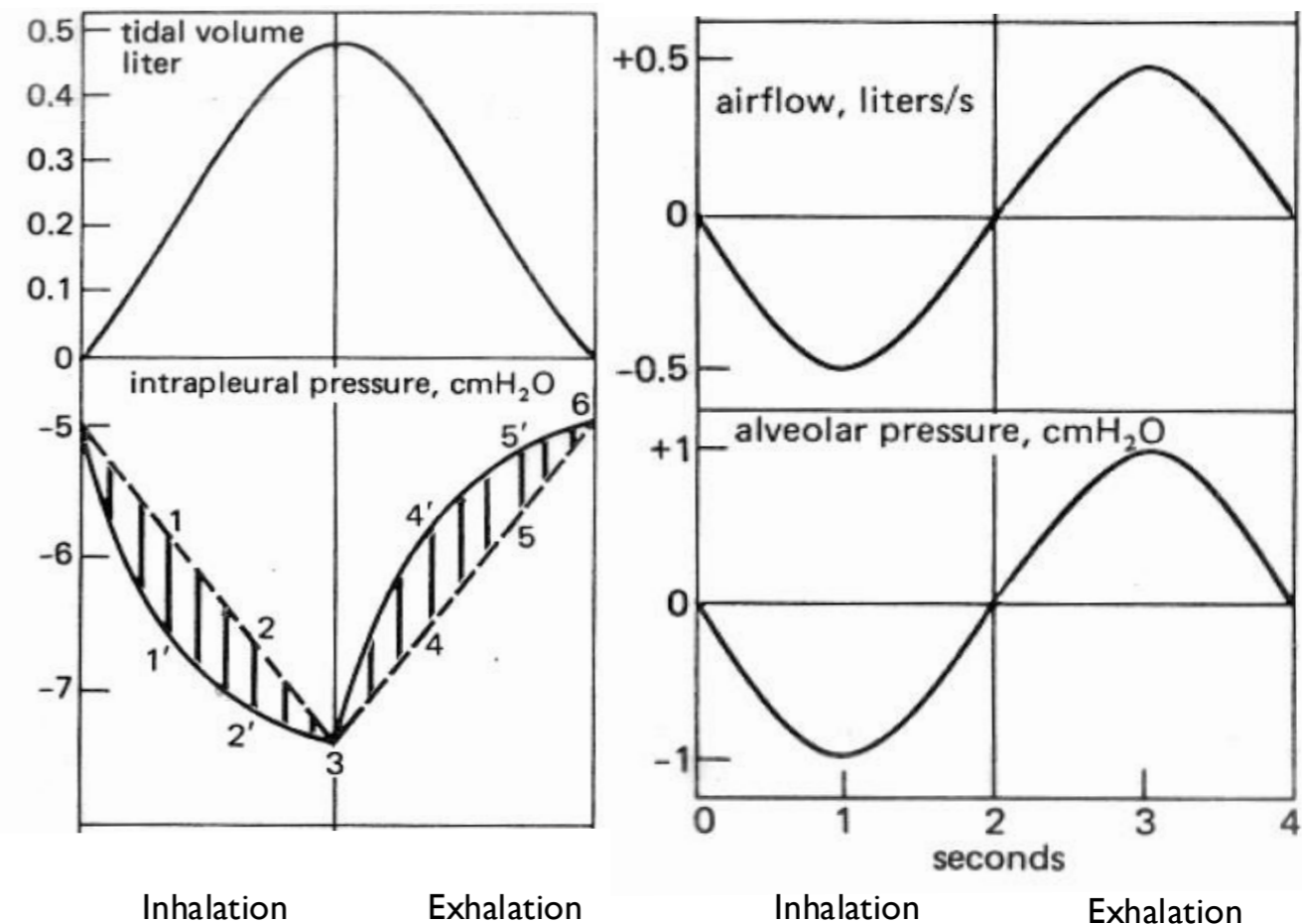
- Alveole: open thermodynamic system
- Surface for gas exchange.
- Number: ~300 million (N.B.: $2^{25}=33,554,432$)
- Size ($d \sim 200 \mu\text{m}$), area ($5 \times 10^{-7} \text{ m}^2/\text{alveolus}$)
- Total alveolar area: $\sim 100 \text{ m}^2$
- Alveolar wall ($\sim 0.5 \mu\text{m}$): alveolar epithelium ($\sim 0.2 \mu\text{m}$) basal membrane ($\sim 0.1 \mu\text{m}$) capillary endothelium ($\sim 0.2 \mu\text{m}$)
- Driving force of gas exchange: diffusion (Fick's laws!)
- The partial pressures of gas phases tend to equilibrate with blood plasma gas tensions.

Respiratory cycle

1. Mechanical control



2. Changes in physical parameters

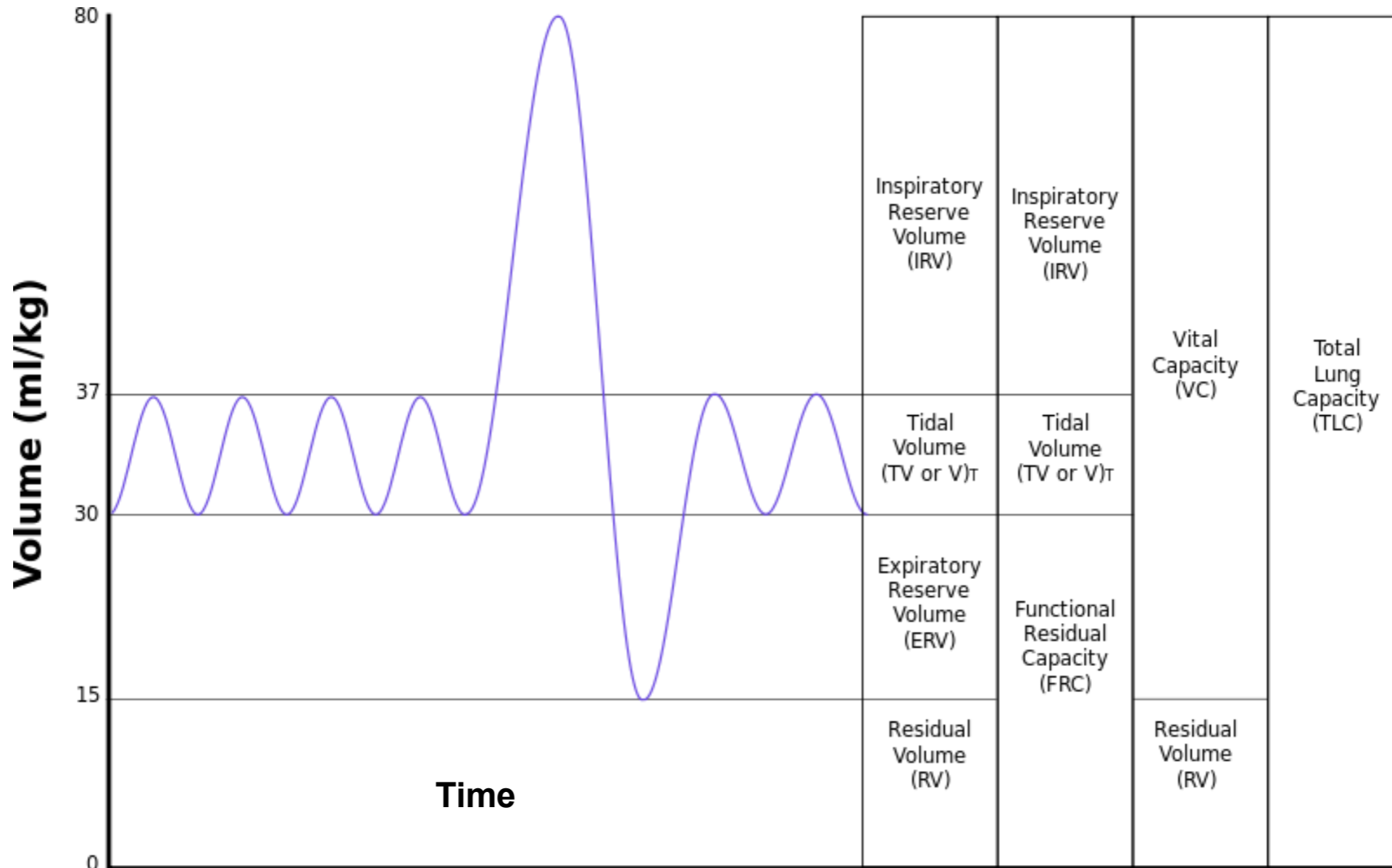


$$1 \text{ cmH}_2\text{O} = 0.1 \text{ kPa} = 0.7 \text{ mmHg}$$

- Eupnoe: normal breathing (14-16/min)
- Polypnoe, tachypnoe: number of breaths >16/min
- Dyspnoe: shortness of breath

Pulmonary volumes and capacities

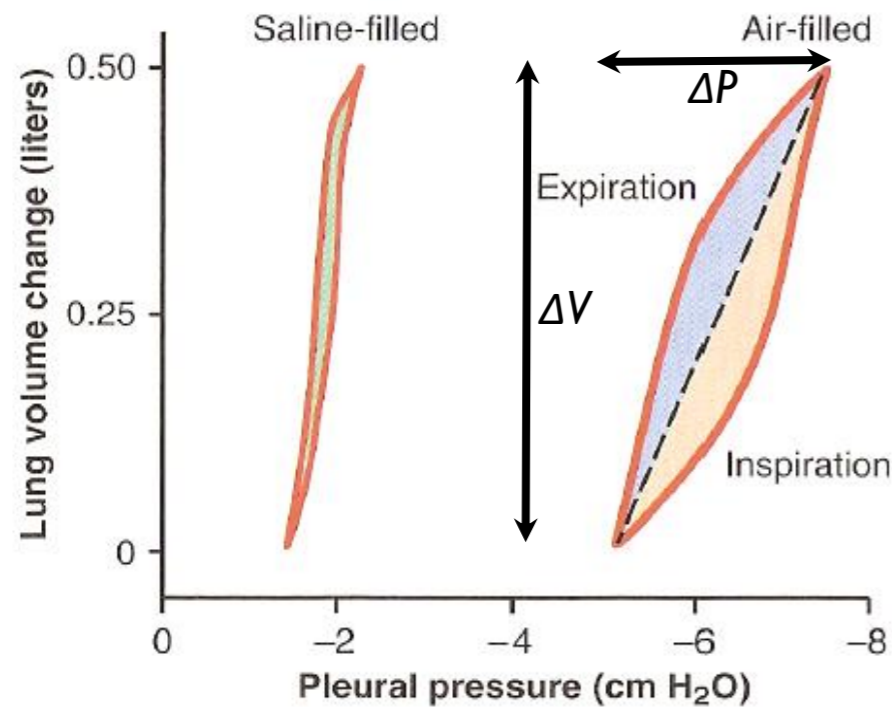
Capacity: sum of volumes



Volume	Value (litres)		Volume	Average value (litres)		Derivation
	In men	In women		In men	In women	
Inspiratory reserve volume	3.3	1.9	Vital capacity	4.8	3.1	IRV plus TV plus ERV
Tidal volume	0.5	0.5	Inspiratory capacity	3.8	2.4	IRV plus TV
Expiratory reserve volume	1.0	0.7	Functional residual capacity	2.2	1.8	ERV plus RV
Residual volume	1.2	1.1	Total lung capacity	6.0	4.2	IRV plus TV plus ERV plus RV

Processes of the respiratory cycle

1. Lung cyclically expands and contracts



Compliance
("deformability",
"stretchability",
"distensibility"):

$$C = \frac{\Delta V}{\Delta P}$$

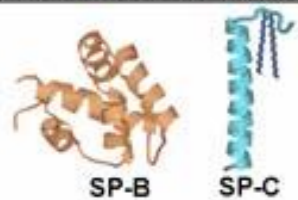
C = compliance (mN⁻¹; *N.B.*: inverse of stiffness)

ΔP = change in pressure (Pa, Nm⁻²)

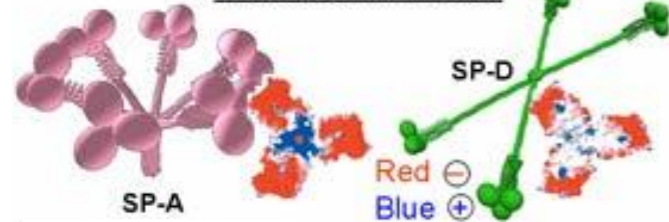
ΔV = change in volume (m³)

Surfactant

SMALL HYDROPHOBIC PROTEINS

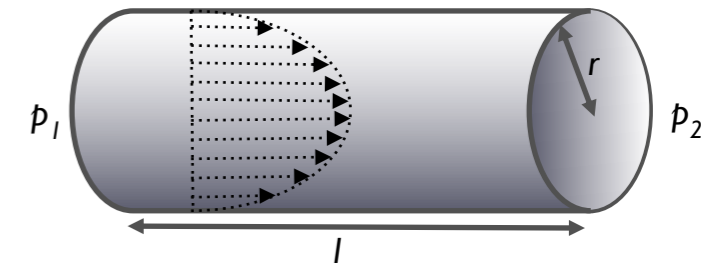


LUNG COLLECTINS



- Pulmonary surfactant: surface-active lipoprotein complex (phospholipoprotein) formed by (type II) alveolar cells (starting from the 20th gestational week).
- Composition: 90 % phospholipids, 10 % proteins ("surfactant protein" SP-A, SP-B, SP-C, SP-D)
- Function: reduces surface tension
- Effect: the smaller the surface tension, the smaller pressure needed to keep alveoli open (for a given pressure, smaller alveoli can be opened) (Young-Laplace equation!).
- **Restrictive diseases:** pulmonary compliance is reduced (fibrosis, lack of surfactant, etc.).

2. Gas flows in airways



Hagen-Poiseuille's law

$$\frac{V}{t} = \frac{\pi r^4}{8\eta} \frac{dp}{dl}$$

V = volume

t = time

($V/t = Q$ = flow intensity)

r = tube radius

η = viscosity

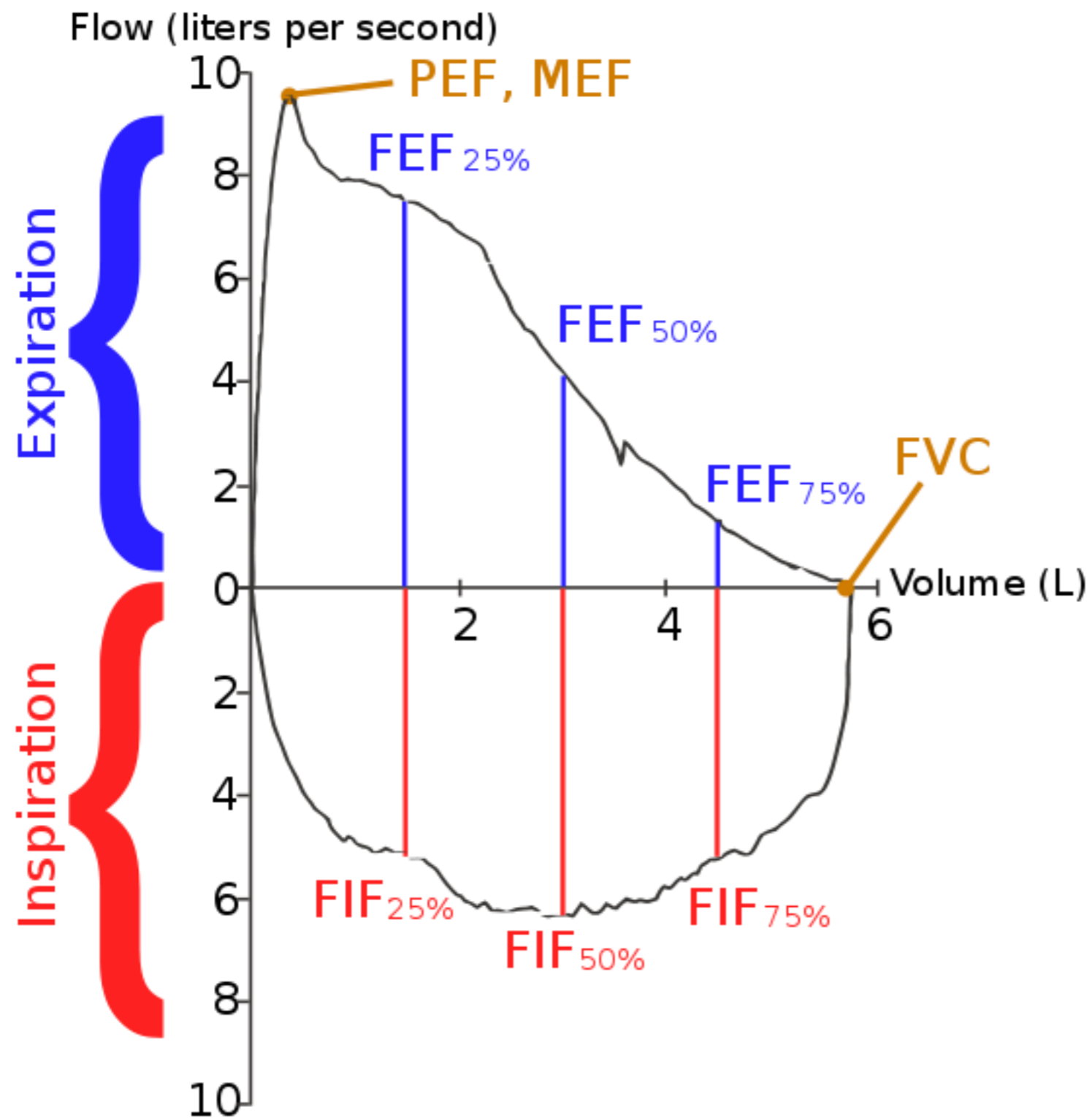
p = pressure

l = length of tube

(dp/dl = pressure gradient, maintained by $p_1 - p_2$)

- Normally (eupnoe): flow is laminar.
- Tachypnoe or disease: turbulent airflow
- **Obstructive diseases:** pulmonary airflow is compromised (COPD - "chronic obstructive pulmonary disease").

Dynamic analysis of respiration



Spirometry:

- PEF, MEF: peak expiratory flow, maximal expiratory flow
- FEF: forced expiratory flow
- FIF: forced inspiratory flow
- FVC: forced vital capacity

Respiratory work

- Volume change against average transmural pressure
- Minute volume (MV) = 7 l
- Breathing rate (BR) = 14/min
- Pressure (P_{tm}) = 0.7 kPa
- Respiratory volume (V) = 0.5 l ($5 \times 10^{-4} \text{ m}^3$)
- Work (W) = $P_{tm} \times V = 0.35 \text{ J/inspiration}$ (294 J/h)

- At large loads it may reach 8400 J/h

Physical examination

- Inspection
- Palpation
- Percussion
- Auscultation

1. Inspection

What is this?

Visual examination of the patient

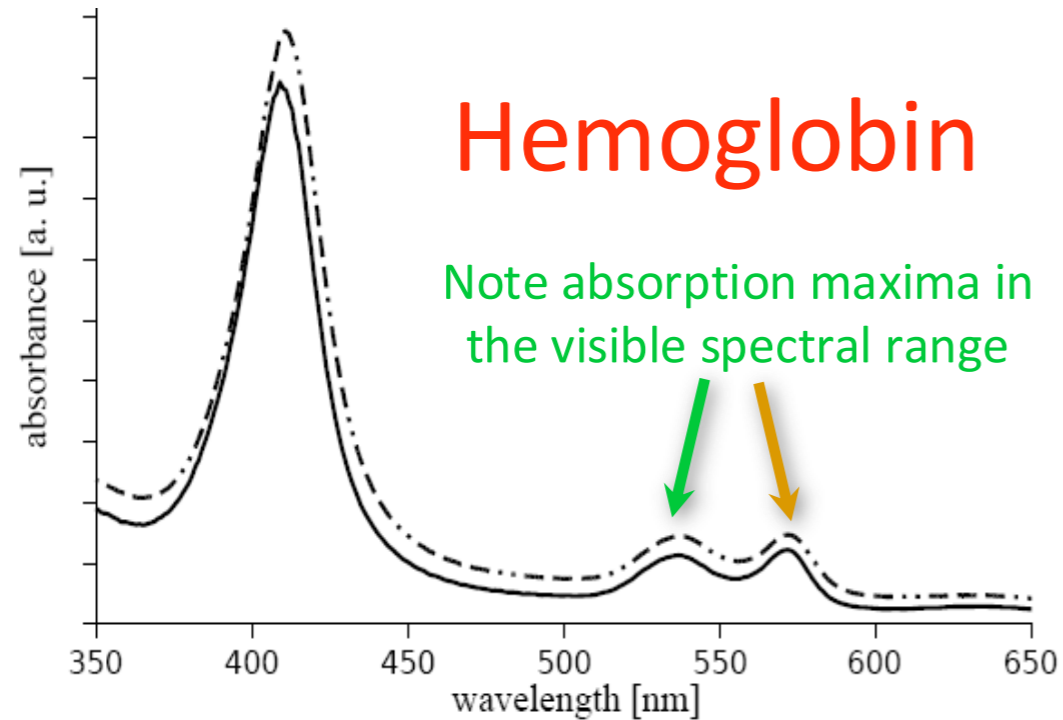
What do we visualize?

Behavior, morphology, structure, *color*

Relationship to biophysics:

Absorption spectroscopy

Light absorption



$$J = J_0 e^{-\mu x}$$

$$\lg \frac{J_0}{J} = \mu x \lg e$$

$$\lg \frac{J_0}{J} = \epsilon_{\lambda} c x$$

absorbance,
optical density

Lambert-
Beer's Law

ϵ_{λ} = molar extinction coefficient

c = concentration



Cyanosis (rise in deoxygenated hemoglobin)



Icterus (jaundice, hyperbilirubinaemia)



Erythema (redness of skin)

2. Palpation

What is this?

Examining the patient by touching

What do we palpate?

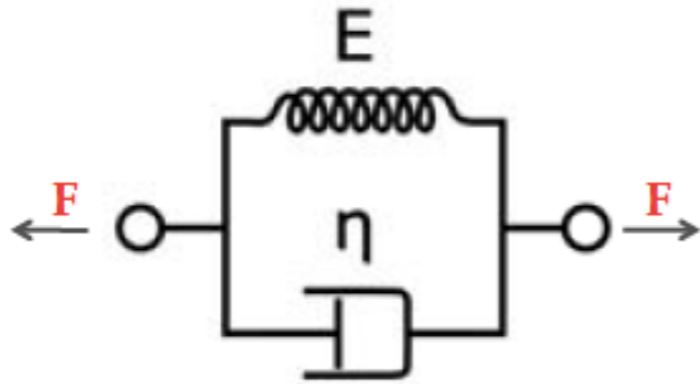
Size, shape, location, *firmness*
(*elasticity, viscosity*)

Relationship to biophysics:

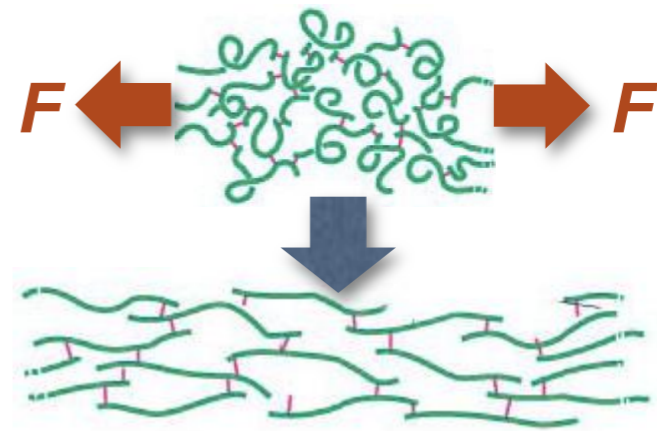
Biomechanics

Viscoelasticity

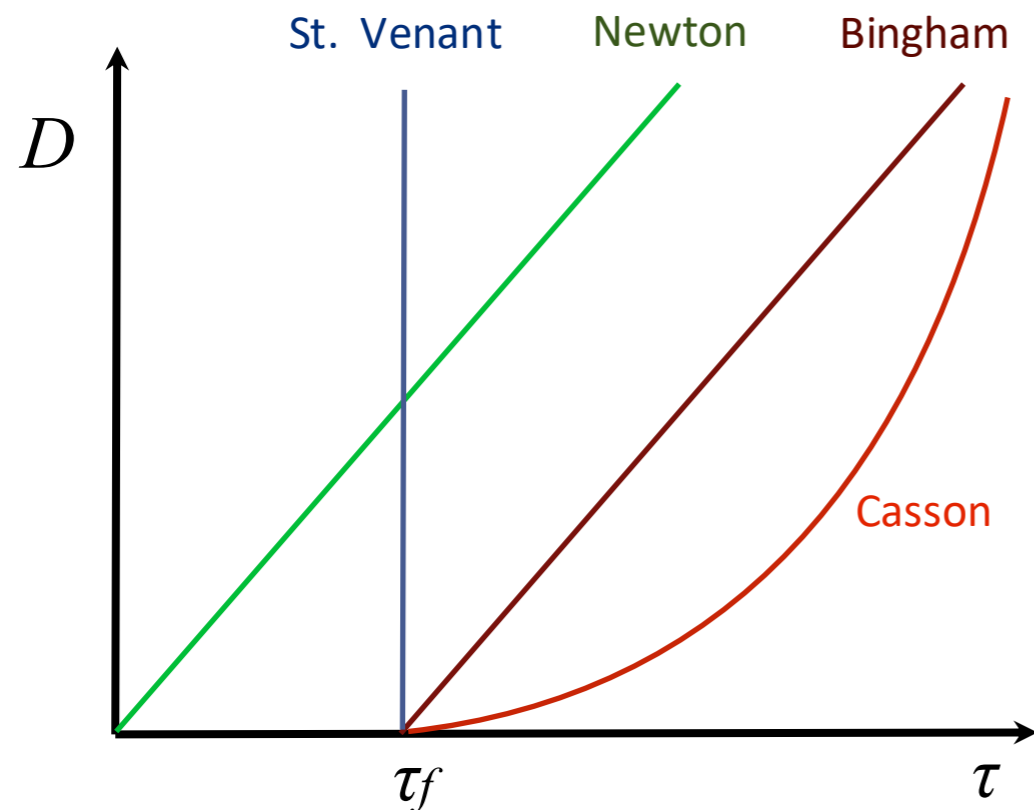
Spring-dashpot model



Schematic mechanism



Velocity gradient versus shear stress function of newtonian and non-newtonian fluids



Example: edema (pitting)

3. Percussion

What is this?

Examining the patient by locally striking (tapping) with short, sharp blows

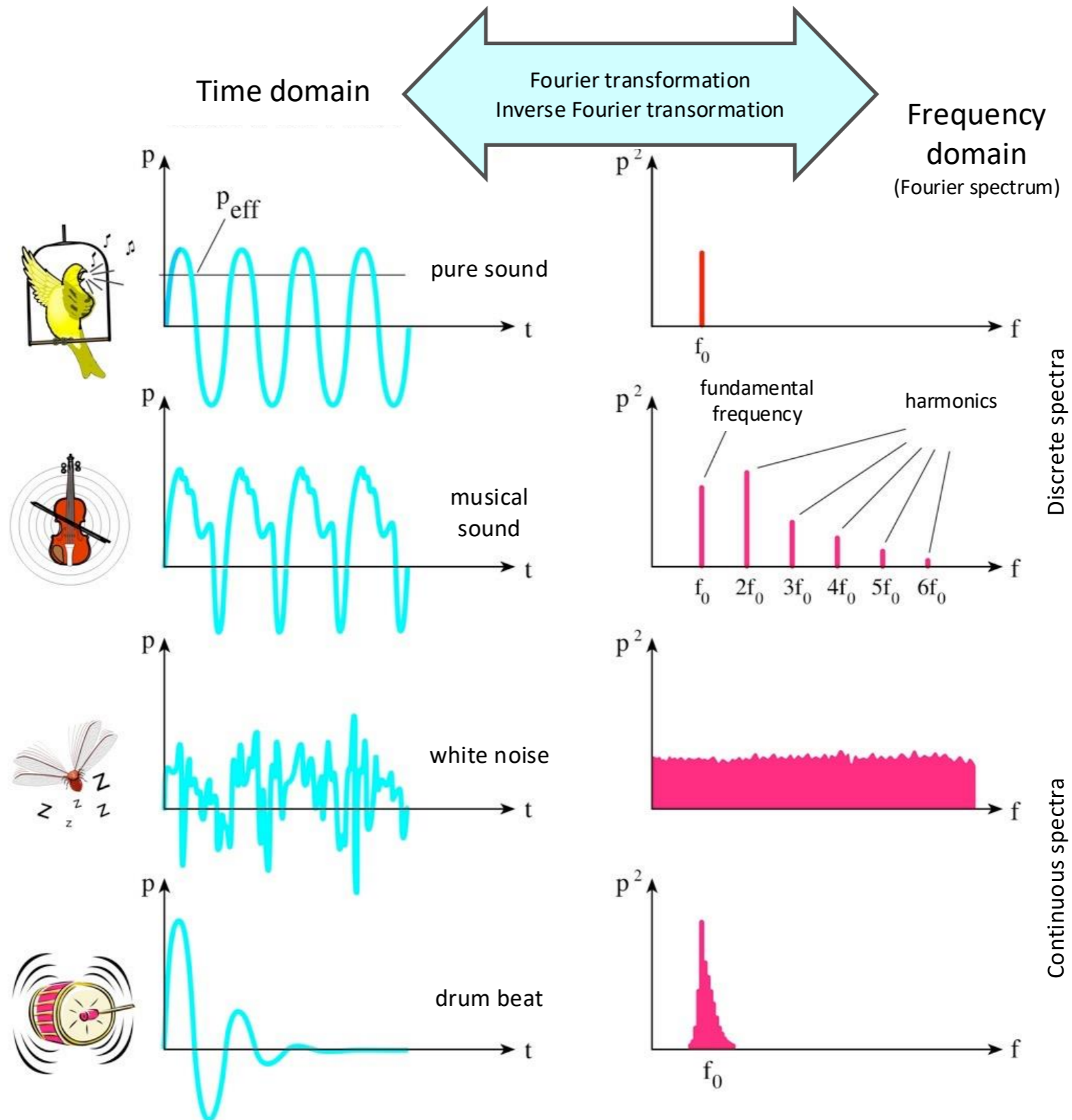
What do we examine by percussion?

Material content, shape, boundaries

Relationship to biophysics:

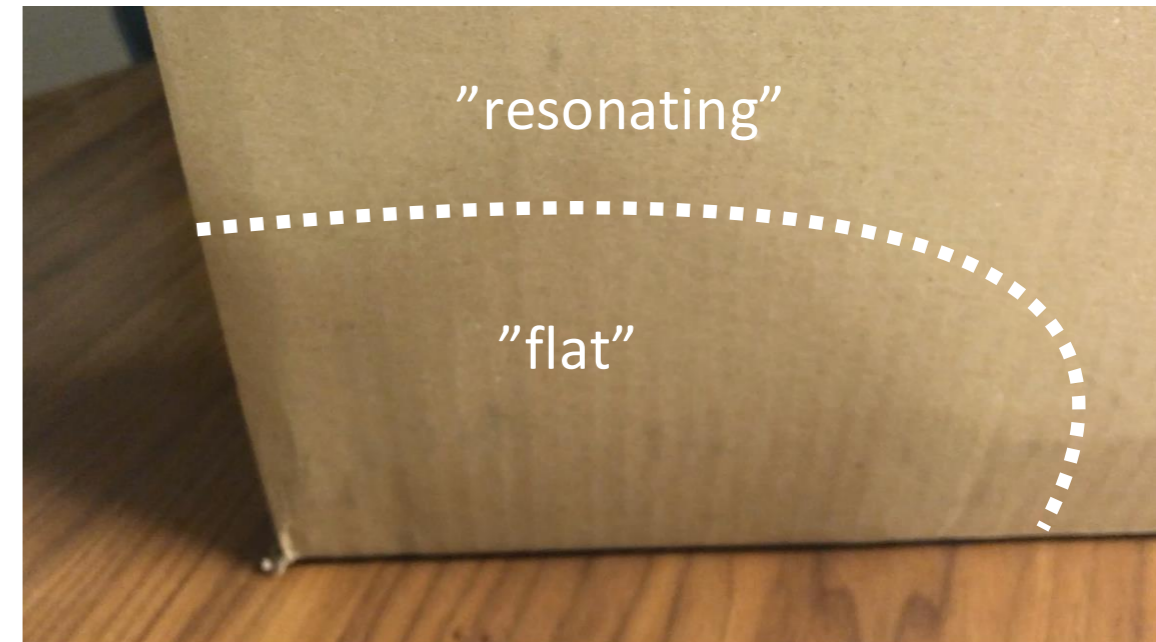
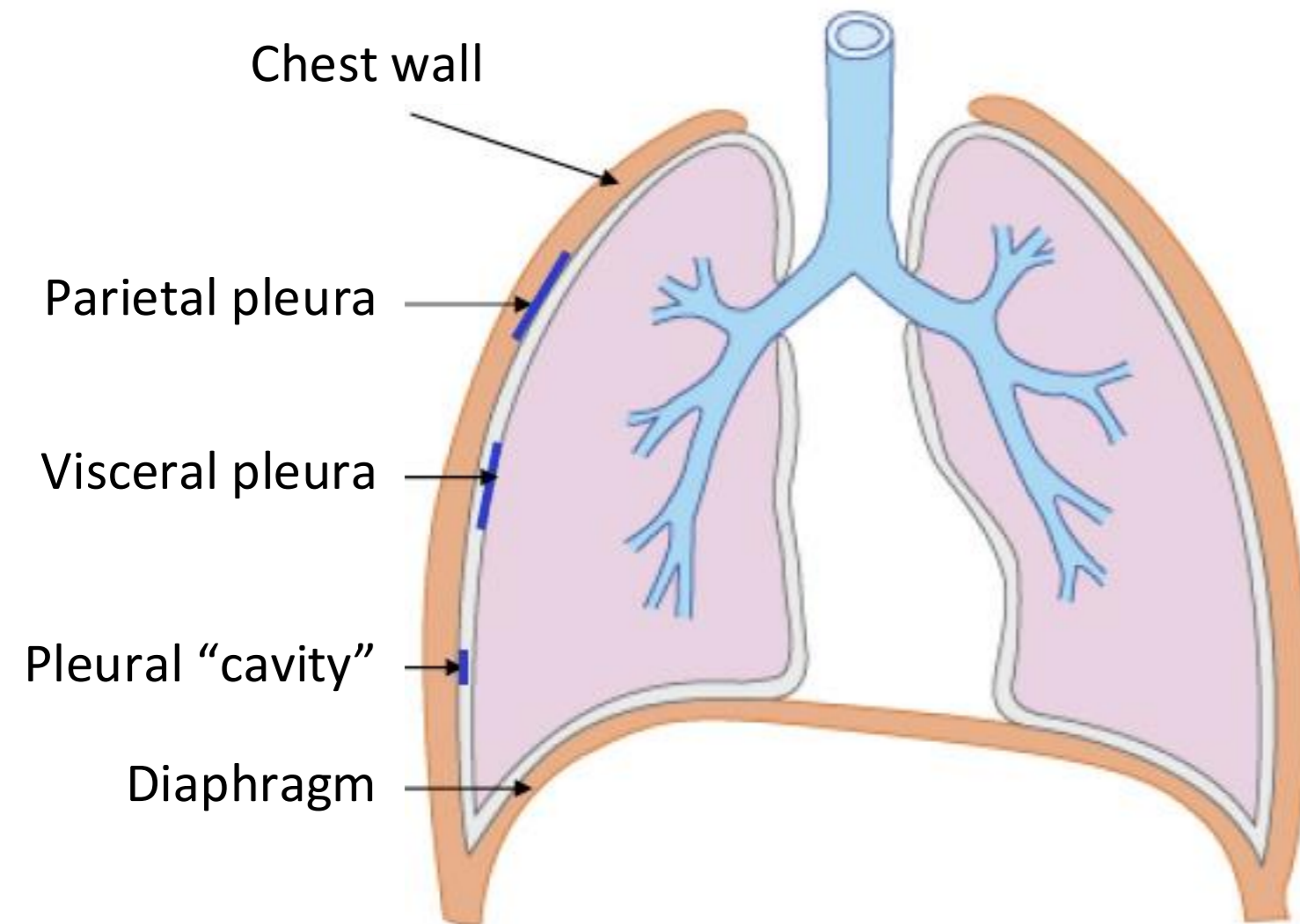
Sound generation, propagation and detection

Sounds and their spectra



Respiratory system as a box

Percussion sounds may be flat (muscle), dull (liver), or resonating (normal lung)



Boundaries of the diaphragm, heart, liver (and other, parenchymal organs) may be detected by percussion.

4. Auscultation

What is this?

Examining the patient by listening (with a stethoscope) for sounds (murmurs) within the body

What do we examine by auscultation?

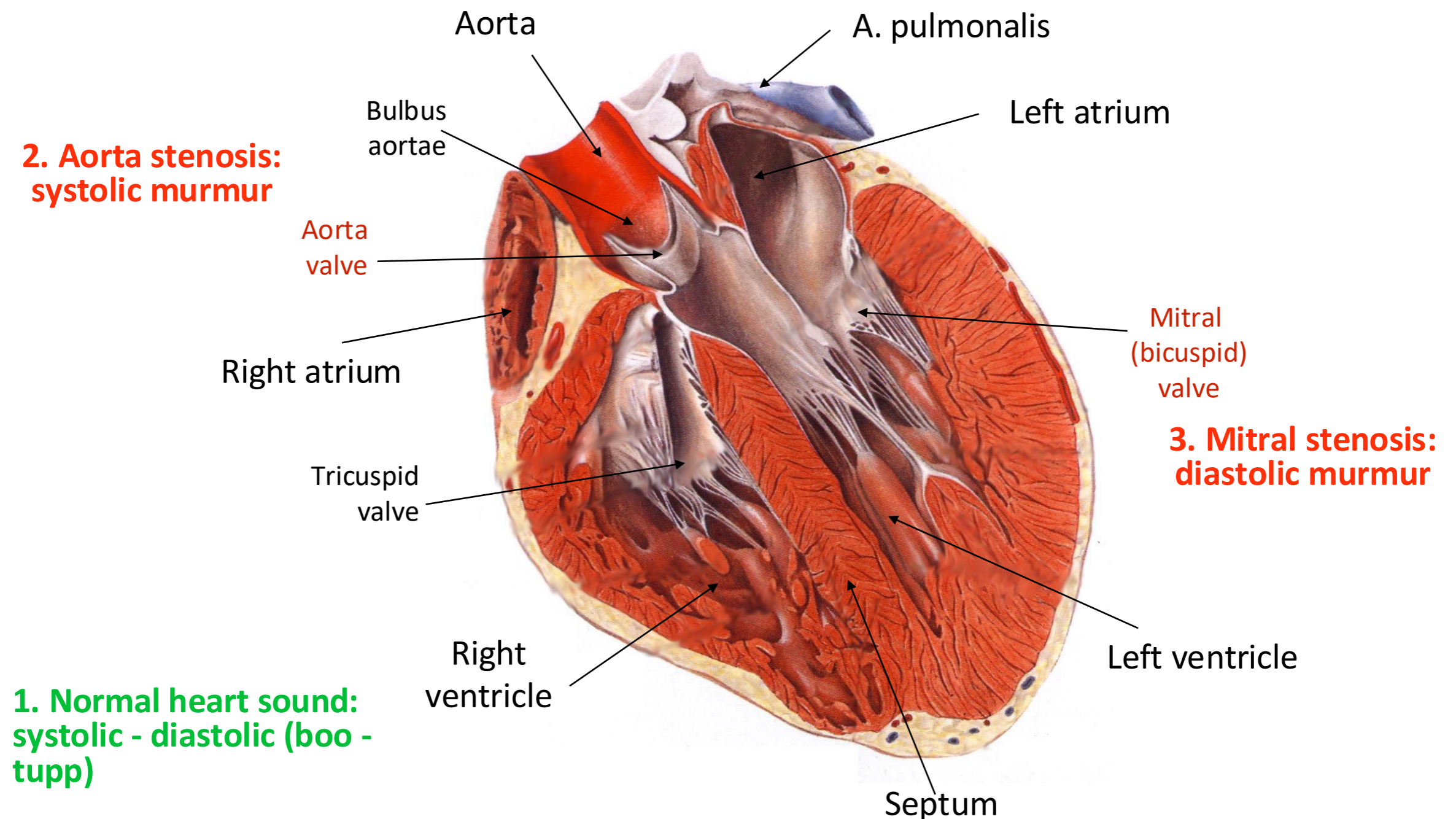
Loudness, pitch, tone, duration, temporal variation (rhythm)

Relationship to biophysics:

Sound generation, propagation, fluid flow, turbulence

Heart sounds and murmurs

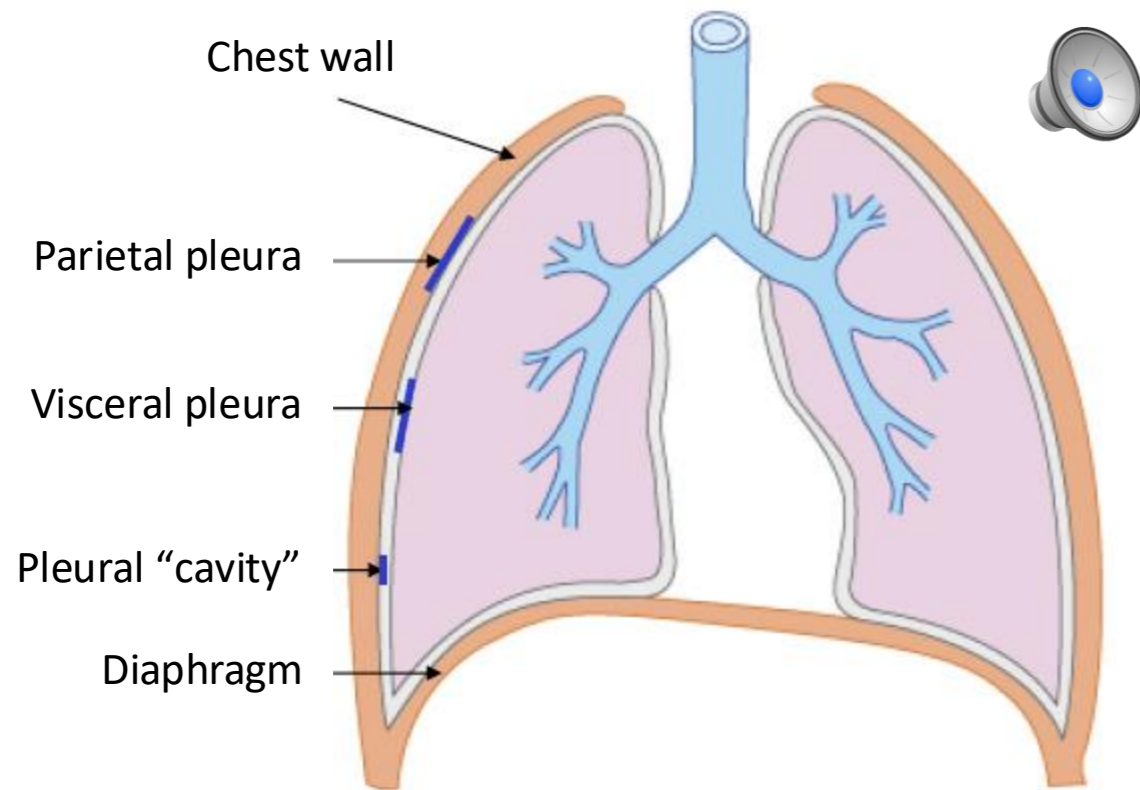
Sources: mechanical vibrations (e.g., valve closing), turbulent flow
Conductance: towards blood-filled compartments



Respiratory sounds

Sources and mechanisms:

1. mechanical vibrations (rubbing noise)
2. mechanical resonance (organ-pipe action)
3. bubbling through fluid

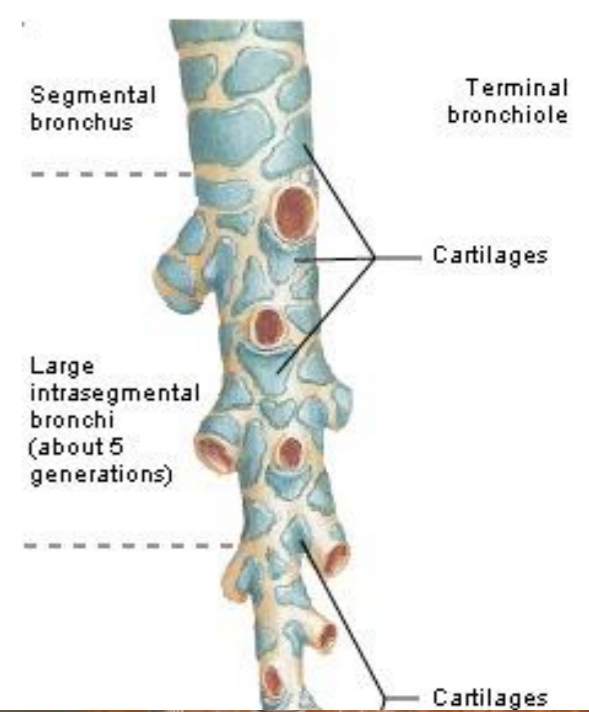


1. pleural rub
(friction between pleural walls)

Tracheobronchial sounds

Conducting zone

- Trachea
- Bronchi
- Bronchioli
- Terminal bronchioli



2. wheeze, stridor
(airway obstruction)

Respiratory zone

Vesicular sounds

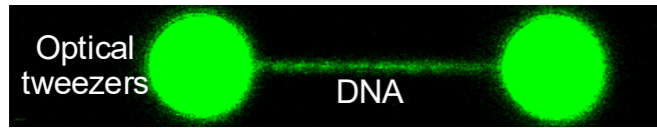
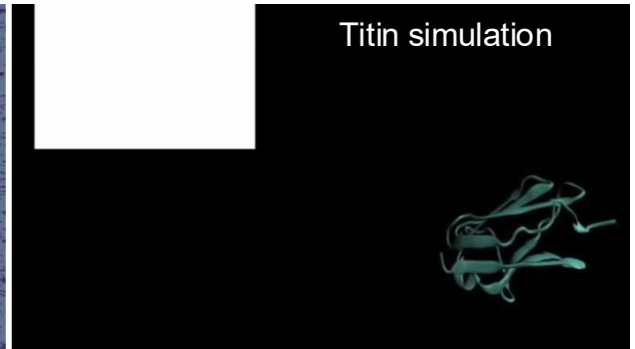
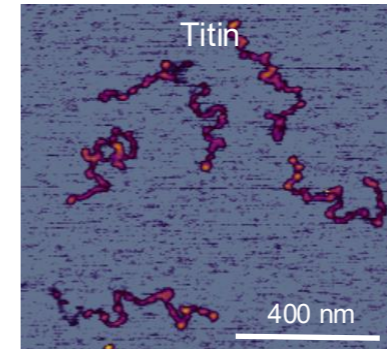
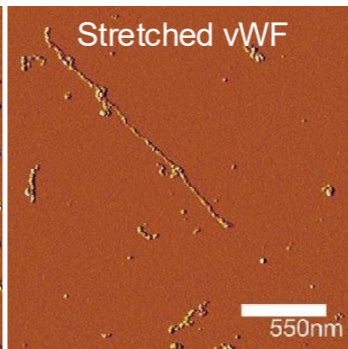
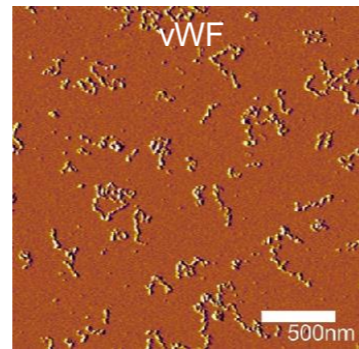
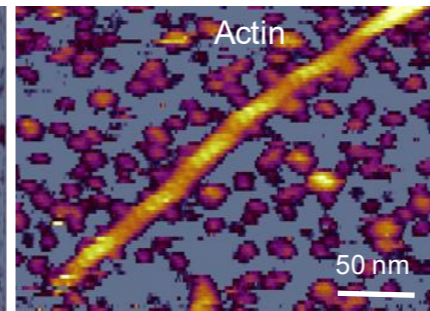
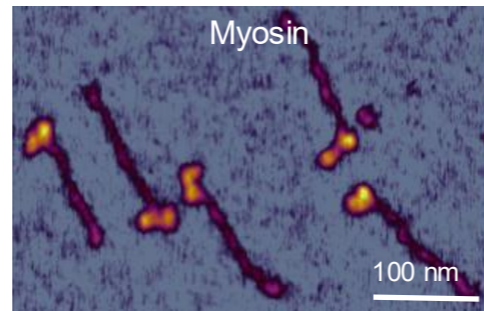
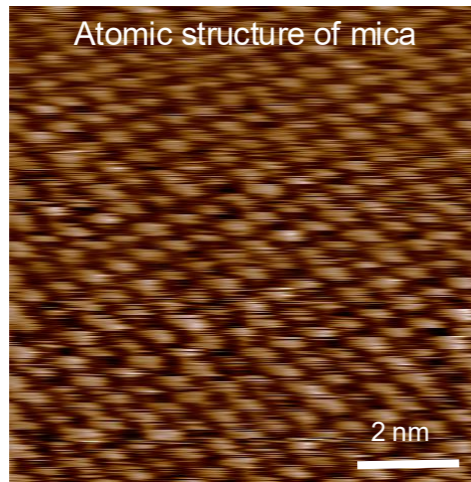
- Respiratory bronchioli
- Alveolar ducts
- Alveoli

3. crackles
(fine, medium, coarse; bubbling through ducts)
-crepitation
(alveolar opening-closing)

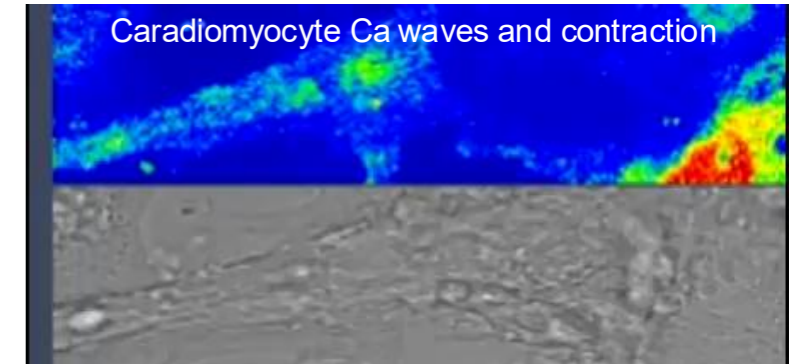
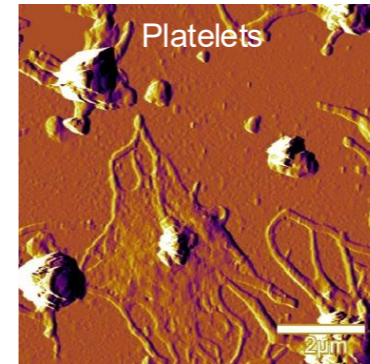
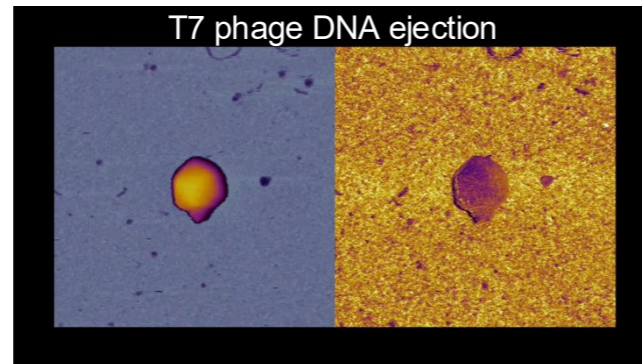
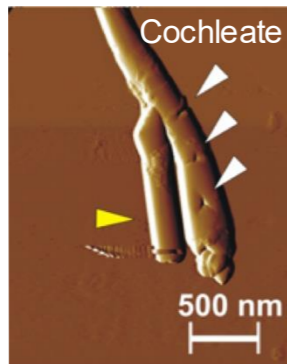


Research in the Department of Biophysics and Radiation Biology

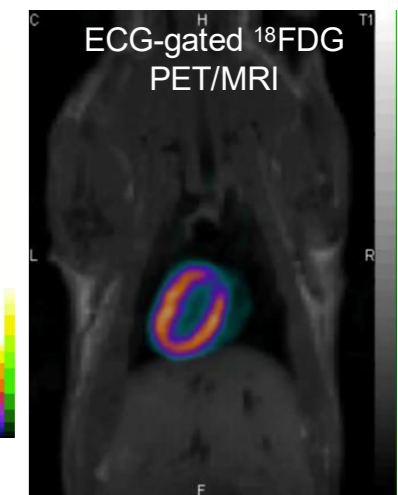
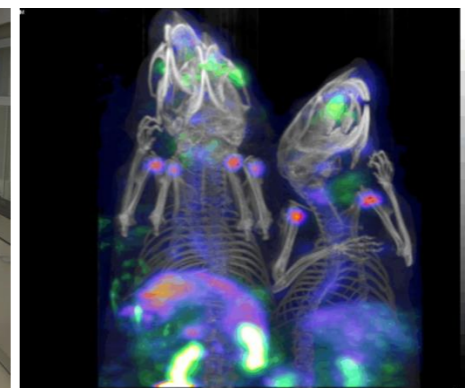
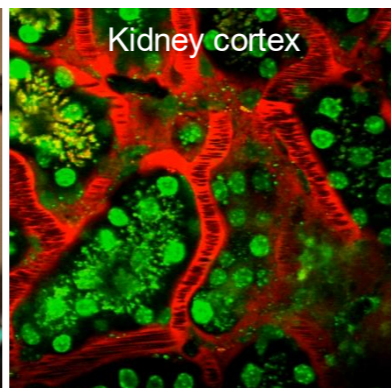
From atoms and molecules...



...through supra-molecular and cellular systems...



...to the living organism



^{99m}Tc-DTPA: BBB - blue/red
²⁰¹Tl-DDC: perfusion - green

Feedback



<https://feedback.semmelweis.hu/feedback/index.php?feedback-qr=W80ZVLJDC488JHA0>