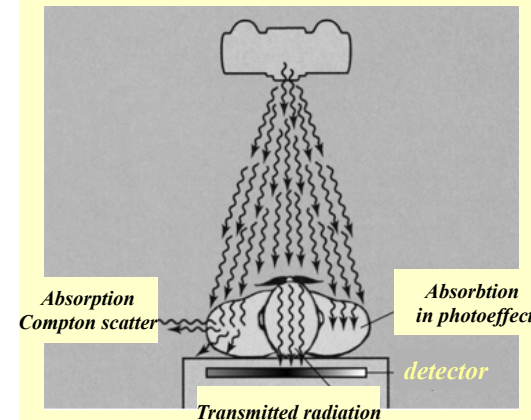


Medical applications of X-rays

X-ray diagnostics and imaging

Diagnostic radiology

Basic principle of X-ray diagnostic
is the absorption of radiation

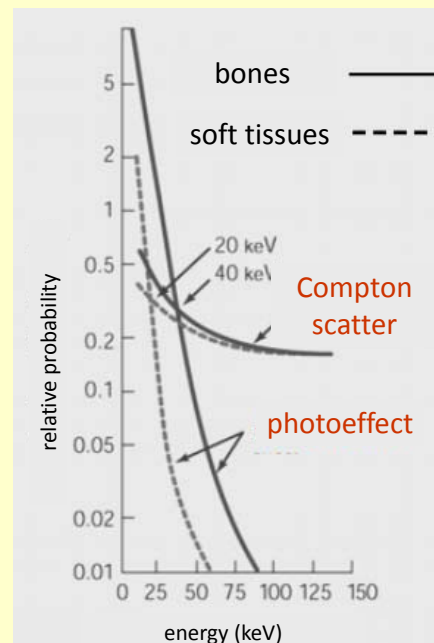


Possible interactions:

Compton scatter

photoeffect

no interaction



Attenuation decreases with
increasing photon energy.

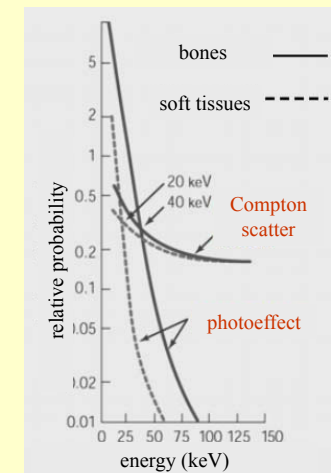
The decrease is more pronounced
in the case of photoeffect.

At lower photon energies τ_m is
dominant.

τ_m strongly depends on the atomic
number.

$$\tau_m \approx \lambda^3 Z^3$$

Spectral changes of radiation
drastically modify the attenuation
processes.



Effective atomic number

$$Z_{eff} = \sqrt[n]{\sum_{i=1}^n w_i Z_i^3}$$

$$\tau_m = C \lambda^3 Z_{eff}^3$$



matter	Z_{eff}
air	7,3
water	7,7
soft tissue	7,4
bone	13,8

Summary of attenuation mechanisms

	Variation with E	Variation with Z	Energy range in tissues
τ_m	$\sim 1/E^3$	$\sim Z^3$	10 – 100 keV
σ_m	Slightly falls with E	linear	0.5 – 5 MeV
κ_m	Rises slowly with E	$\sim Z^2$	>5 MeV

Main contrast mechanism in diagnostic X-ray:
photoeffect ($\sim Z^3$)

Production of X-ray image

Representation of variations in
attenuated intensity

in radiation sensitive film

on luminescent screen

in digitized image

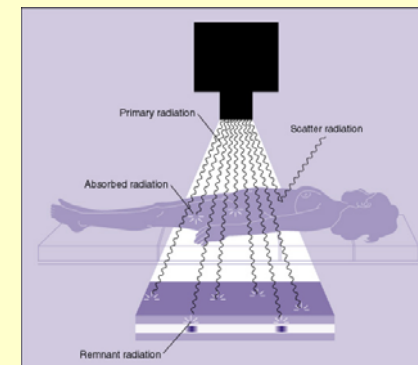


scalp



chest

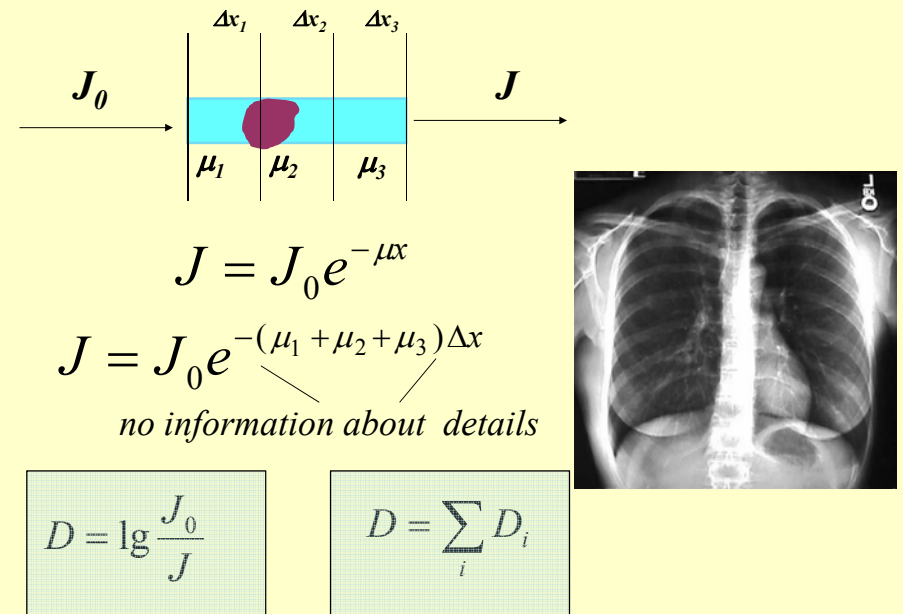
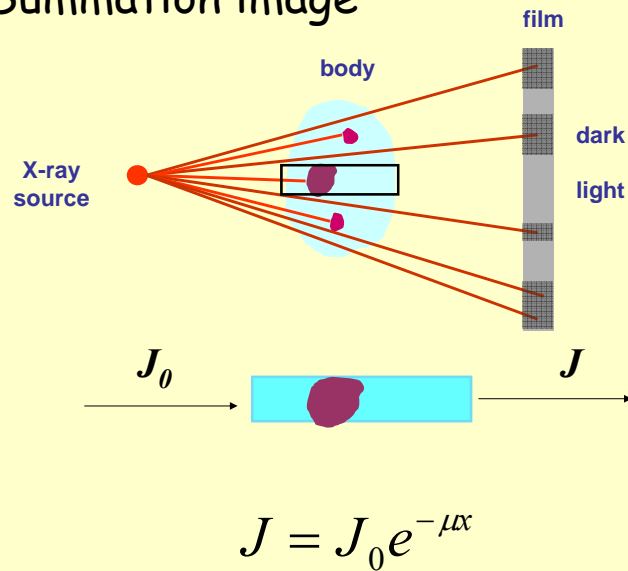
Summation image



*“X-ray image”
or
“radiographic image”*

Contrast arises due to relative attenuation

Summation image



Radiographic contrast

If the differences between

$$\tau_m = C \lambda^3 Z_{eff}^3$$

or
densities

of neighboring tissues are not sufficient

alteration of Z_{eff} or density

	Z_{eff}	ρ (g/cm ³)	$\tau_m = C \lambda^3 Z_{eff}^3$
H ₂ O	7.7	1	
soft tissues	7.4	1	
bones	13.8	1.7 - 2.0	
air	7.3	1.29 x 10 ⁻³	

Positive contrast → increased attenuation

$$Z_{eff \text{ contrast}} > Z_{\text{surrounding}}$$

$$\mu_{\text{contrast}} > \mu_{\text{surrounding}}$$

$$\mu_{m \text{ contrast}} > \mu_{m \text{ surrounding}}$$

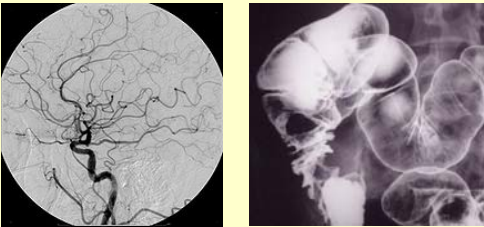
Negative contrast → decreased attenuation

$$Z_{eff \text{ contrast}} < Z_{\text{surrounding}}$$

$$\mu_{\text{contrast}} < \mu_{\text{surrounding}}$$

Positive contrast

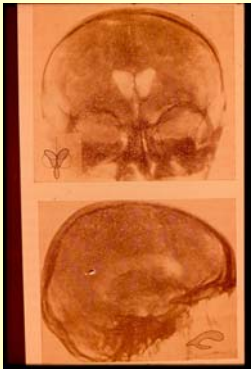
increased Z_{eff}



E.g., ^{53}I - or ^{56}Ba -compounds

Negative contrast

$\rho_{\text{contrast}} < \rho_{\text{surrounding}}$



air,
 CO_2

Digital Subtraction Angiography (DSA)



contrast

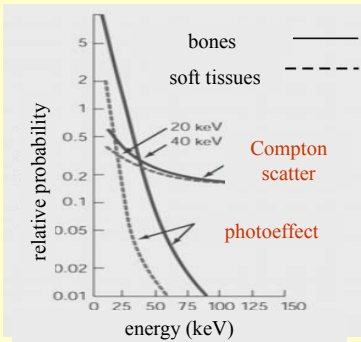
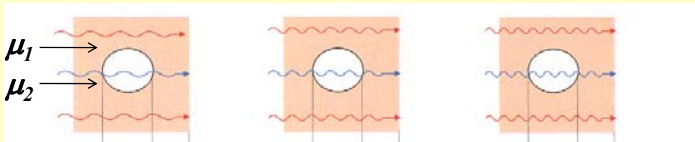
native

contrast - native

images

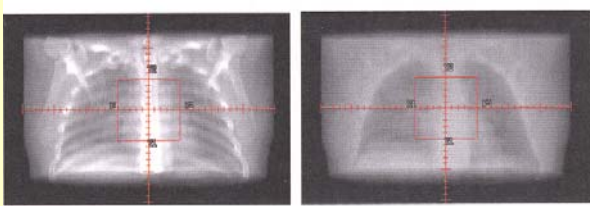
Photon energy and image quality

$U_1 < U_2 < U_3$



Photon energy and image quality

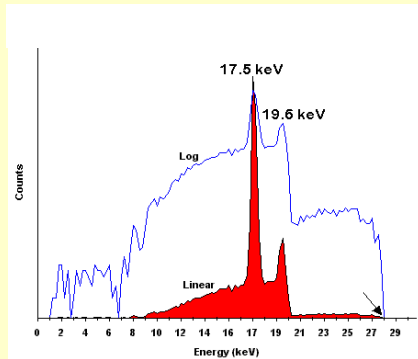
$U_1 < U_2$
(30 keV) *(2 MeV)*



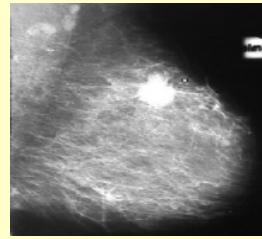
<i>Photo effect</i>	<i>36%</i>	<i>0%</i>
<i>Compton scatter</i>	<i>51%</i>	<i>99%</i>
<i>Pair production</i>	<i>0%</i>	<i>1%</i>

Average values

Typical spectrum used in mammography



Characteristic lines of Molybdenum



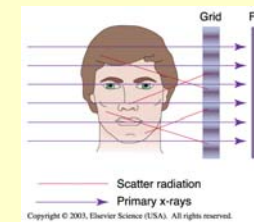
Malignant tissue in a mammogram



Intra-oral radiography

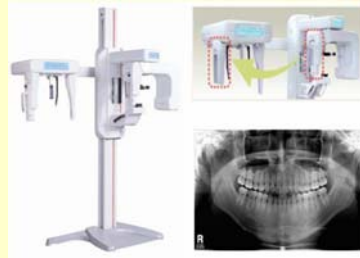


Extra-oral radiography



Dental panoramic radiography

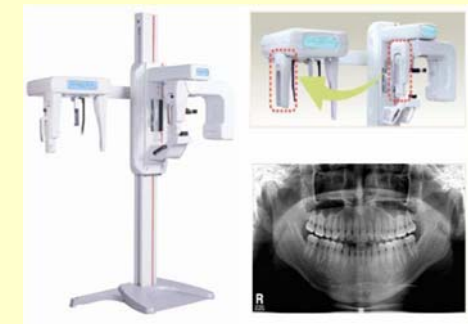
The equipment consists of a horizontal rotating arm which holds an X-ray source and a moving film mechanism (carrying a film) arranged at opposed extremities.



overlapping individual images projected on the film

Dental panoramic radiography

overlapping individual images projected on the film



a composite picture of the maxillo-facial block is created

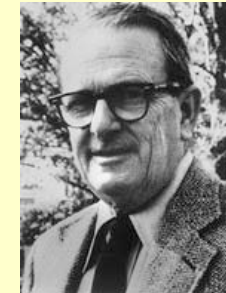
Limitations of conventional radiography

- **Superimposition** – inability to resolve spatially structures along the X-ray propagation axis resulting in loss of depth information (flat picture), because the three-dimensional body is projected on to a two-dimensional receptor.
- Difficulty in **distinguishing** between homogenous objects of **non-uniform thickness**.
- Inability to distinguish soft body tissue because of **limited contrast**.

X-Ray Transmission Computed Tomography



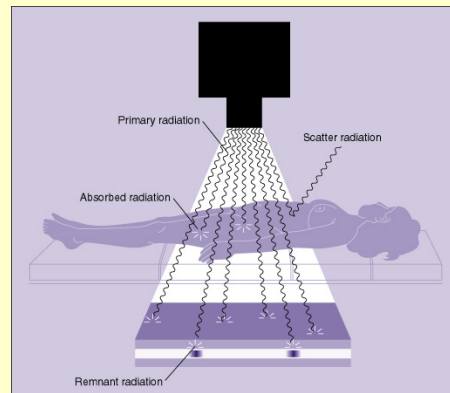
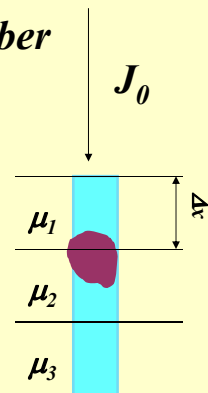
Godfrey Hounsfield



Allan Cormack

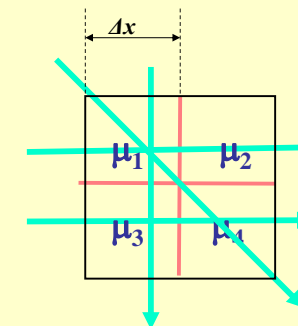
1979 Nobel-prize in Medicine

remember



$$J = J_0 e^{-(\mu_1 + \mu_2 + \mu_3) \Delta x}$$

Mathematical interpretation with a simple example



$$J = J_0 e^{-(\mu_1 + \mu_2) \Delta x}$$

$$J = J_0 e^{-(\mu_3 + \mu_4) \Delta x}$$

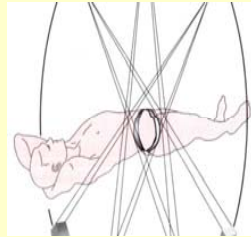
$$J = J_0 e^{-(\mu_1 + \mu_3) \Delta x}$$

$$J = J_0 e^{-(\mu_1 + \mu_4) \Delta x}$$

4 independent equations, 4 unknowns

New – axial – arrangement

The 2D CT image corresponds to a 3D section of the patient



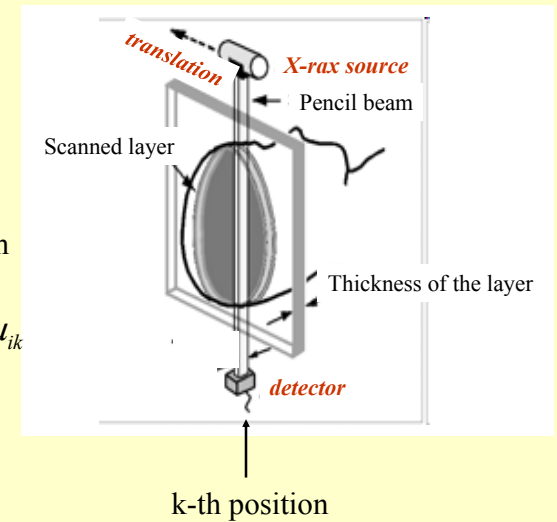
Computed tomography (CT) techniques allows sectional imaging .

Innovation of CT

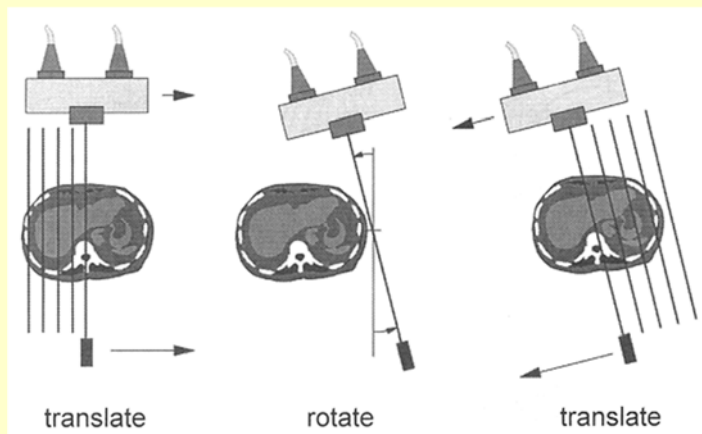
$$J_k = J_0 e^{-(\sum \mu_{ik}) \Delta x}$$

μ_i : attenuation coefficient of volume element along the beam

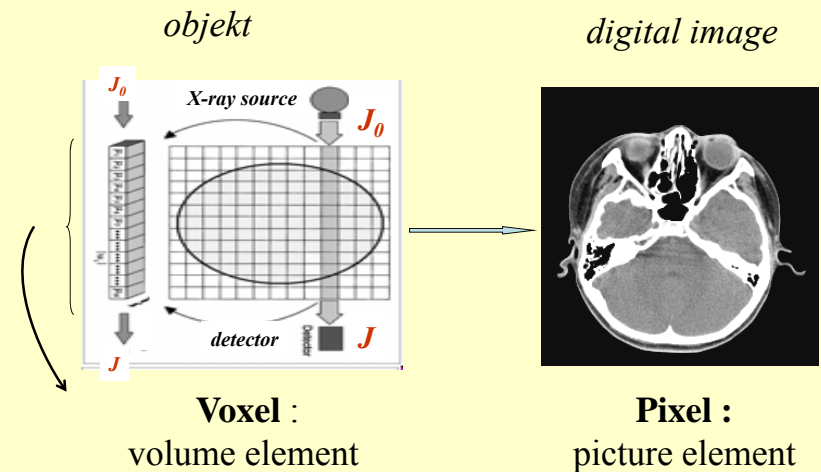
$$\lg \frac{J_0}{J} = \lg e \Delta x \sum_{i=1}^n \mu_{ik}$$



First generation CT



To store the multitude of images and process the data requires computer.



Each *pixel* on the CT image displays the average x-ray attenuation properties of the tissue in the corresponding *voxel*.

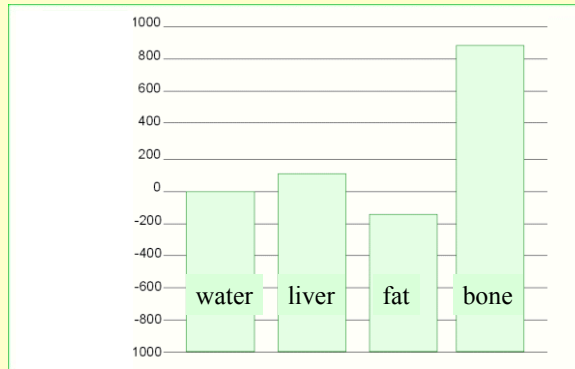
Reconstruction of the image

Density matrix

Hounsfield units

$$H_{CT} = 1000 \frac{\mu - \mu_{water}}{\mu_{water}}$$

Hounsfield scale

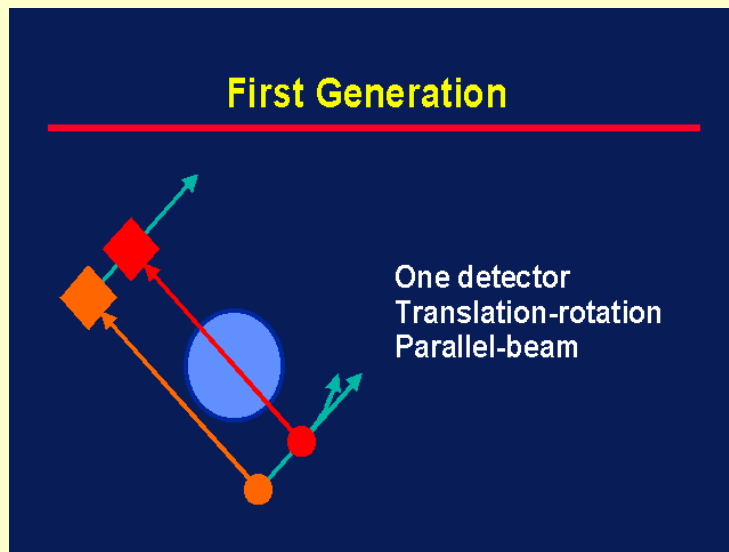


GOALS OF CT

- Minimal superimposition
- Image contrast improvement
- Small tissue difference recording

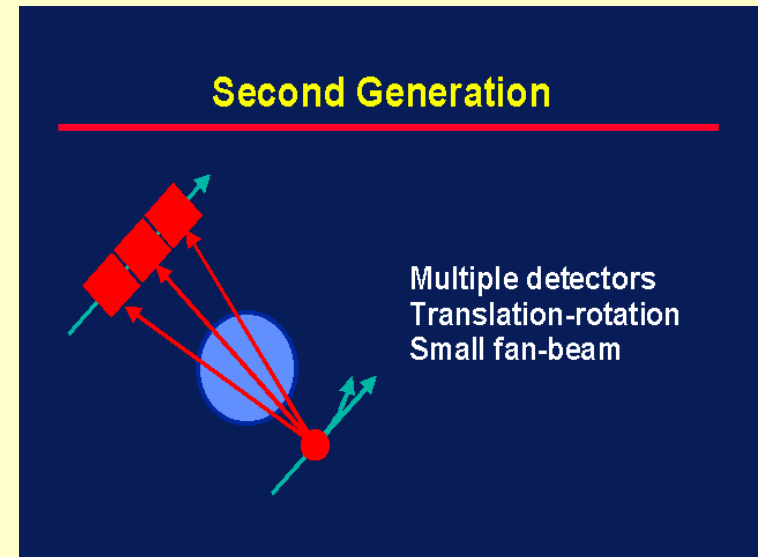
180 DEG ROTATION

First Generation



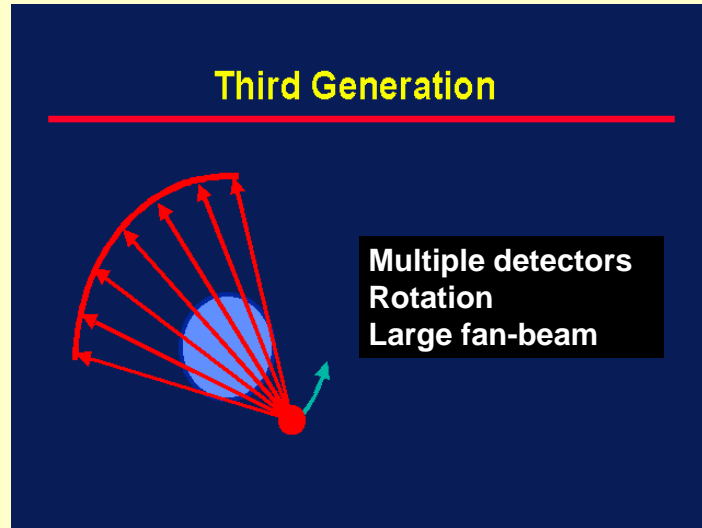
180 DEG ROTATION

Second Generation



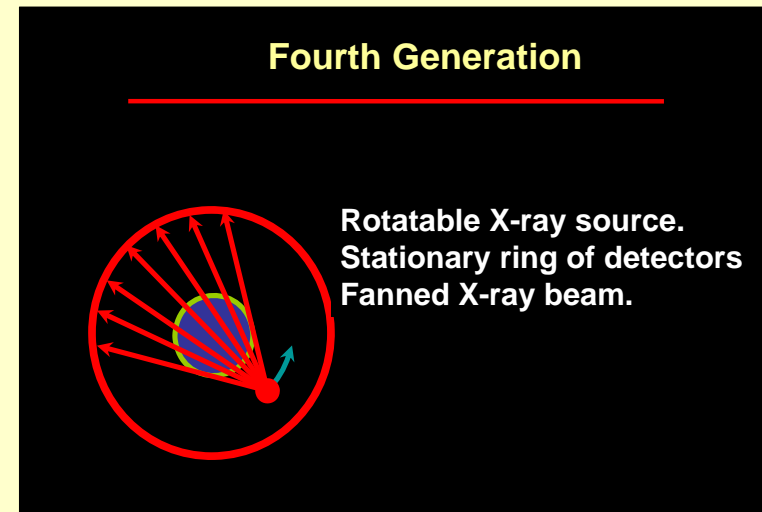
360 DEG ROTATION

Third Generation

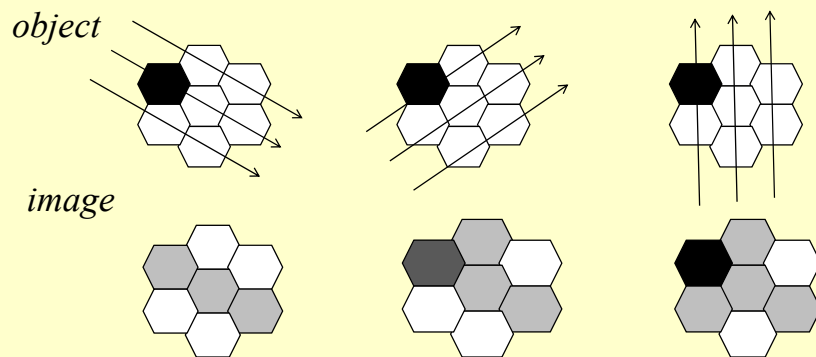


360 DEG ROTATION

Fourth Generation

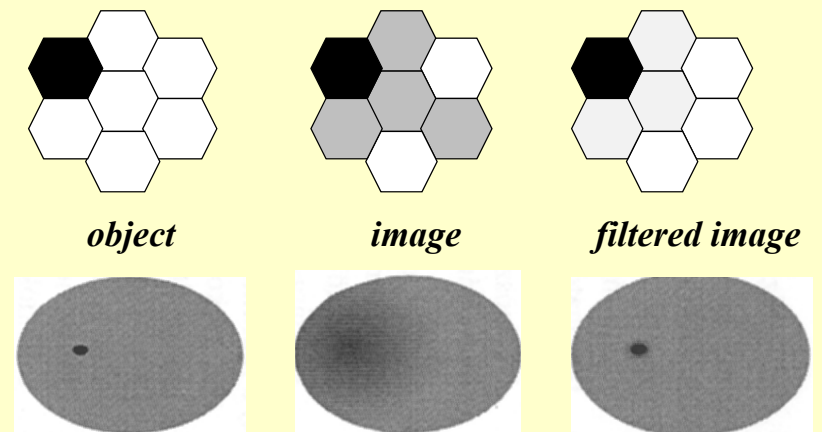


Tomographic reconstruction



As data from a large number of rays are backprojected onto the image matrix, areas of high attenuation tend to reinforce one another, as do areas of low attenuation, building up the image.

Tomographic reconstruction



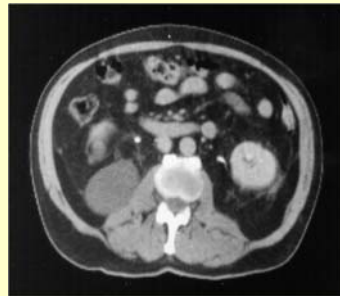
Early days vs Today

Second generation



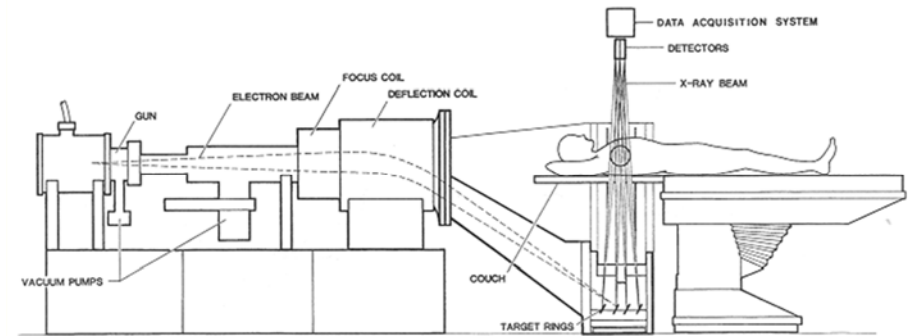
5 minutes

Fourth generation



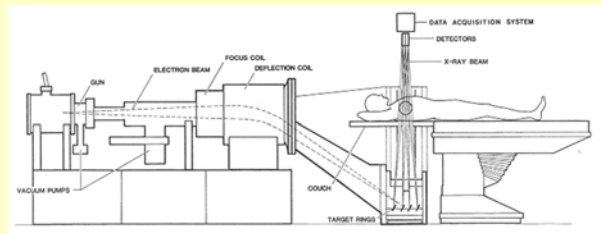
2 seconds

5th generation: stationary/stationary



No conventional x-ray tube. Large arc of tungsten encircles patient and lies directly opposite to the detector ring.
Electron beam steered around the patient to strike the annular tungsten target.

• 5th generation: stationary/stationary



- Developed specifically for cardiac tomographic imaging
- No conventional x-ray tube; large arc of tungsten encircles patient and lies directly opposite to the detector ring
- Electron beam steered around the patient to strike the annular tungsten target
- Capable of 50-msec scan times; can produce fast-frame-rate CT movies of the beating heart

AXIAL SCAN

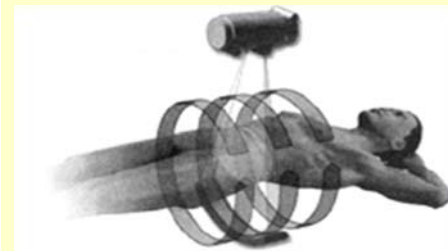


Table stops at the scanning position and the tube rotates around a patient.

Patient continuously moves in the Z-axis direction while the tube rotates around.

Detectors for X-ray diagnostics

radiation
sensitive film



scintillators



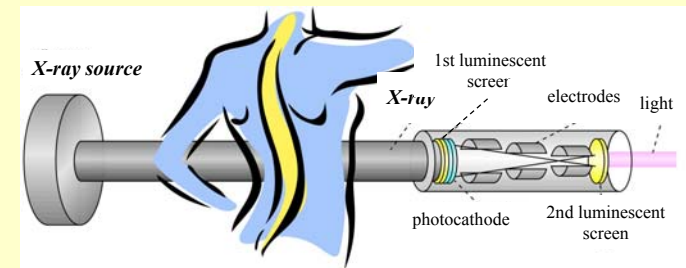
gas ionisation chamber



semiconductor
detectors



X-ray image intensifier



Possibility of image digitization

Smaller patient exposure

Manipulation under X-ray control

Question of the week

What are the main differences between first and fourth generation X-ray CT-s?

Damjanovich, Fidy, Szöllősi: Medical Biophysics

VIII. 3.1

3.1.1

3.1.2

VIII.4.3