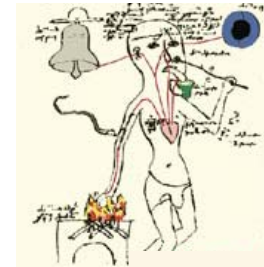


BIOPHYSICS OF SENSORY RECEPTORS

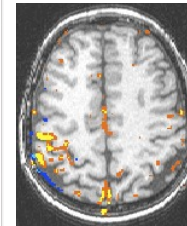
Theories about sensing



Cardiocentric sensing
(Medieval reconstruction)

Aristotle (384-322 BC)
cardiocentric sensing.

Galenus (129-200 AD) raised
doubts about cardiocentric
sensing.



fMRI recording during
sensorimotor function



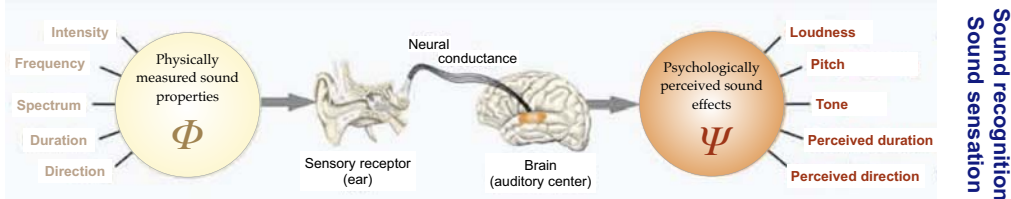
Sensory homuncle

Today:

- stimulus** →
- sensory receptors →
- receptor potential →
- neuron/nerve →
- action potential →
- central nervous system →
- signal processing →
- **sensation**

Steps of sensing

Case of hearing



Sensory receptors



Sensory receptor: Specialized sensory cell, which responds to a given stimulus (e.g., light, sound, chemicals) and relays the information to the central nervous system.

Cell surface receptor (different meaning!): Proteins which specifically bind hormones, neurotransmitters and other molecules, and thus initiate specific cellular reactions.

Five senses?

Most important sensory modalities (First 11: perceived modalities)

	Modality	Receptor	Organ
1	Vision	Rods and cones	Eye
2	Hearing	Hair cells	Ear (organ of Corti)
3	Olfaction (smelling)	Olfactory neuron	mucus membrane
4	Taste	Taste receptor cells	Taste buds
5	Angular acceleration	Hair cells	Ear (semicircular canals)
6	Linear acceleration	Hair cells	Ear (utricle and saccule)
7	Touch, pressure	Nerve endings	Multiple types
8	Heat	Nerve endings	Multiple types
9	Pain	Nerve endings	Multiple types
10	Cold	Free nerve endings	...
11	Joint position and motion	Nerve endings	Multiple types
12	Muscle length	Nerve endings	Muscle spindle
13	Muscle stress	Nerve endings	Golgi's tendon organ
14	Arterial pressure	Nerve endings	Sinus caroticus stretch receptors
15	Central venous pressure	Nerve endings	Venous, atrial stretch receptors
16	Lung stress	Nerve endings	Pulmonary stretch receptors
17	etc...	etc...	etc...

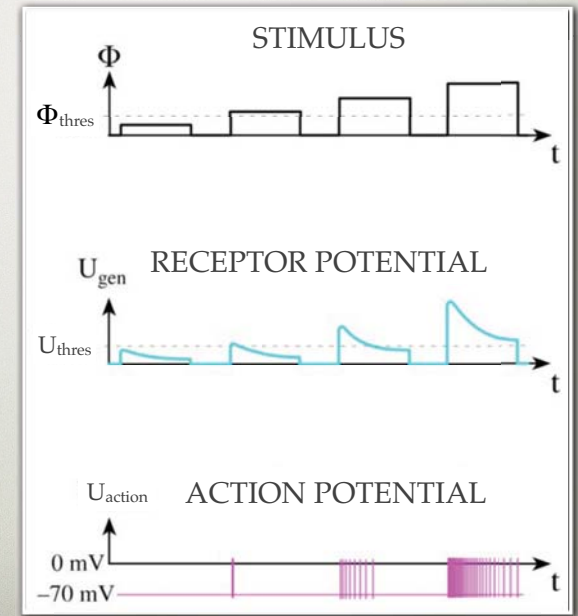
Steps of signal transduction

Environment
(physical-chemical effects)

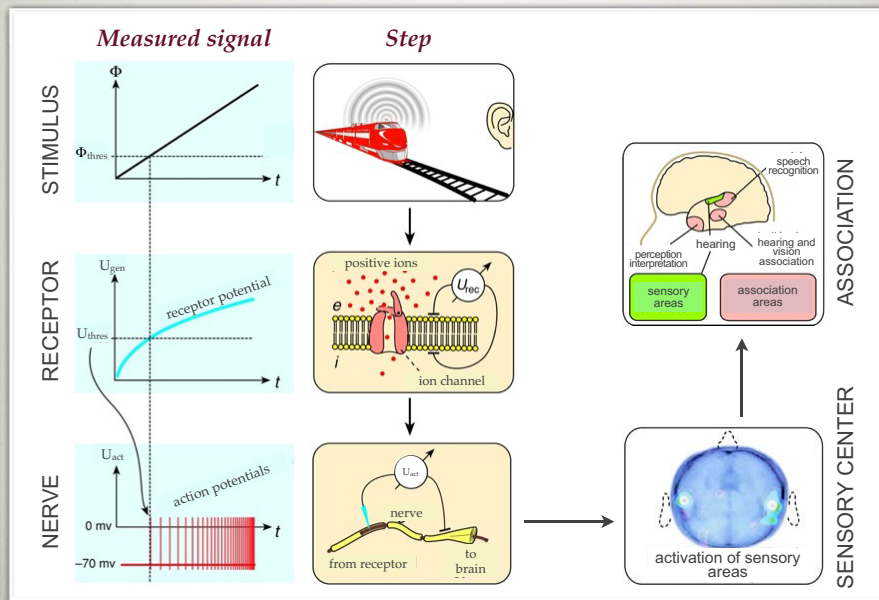
Receptor

Neuron

Central nervous system



From stimulus to sensation



Sensitivity

eV - size stimulus is sufficient for evoking action potential:

- sound receptors: thermal motion of the molecules of air
- light receptors: 1-2 photons

What is coded by the action potential?

- modality (type)
- intensity (strength)
- duration
- localization

of the **stimulus**

1. Modality

Adequate stimulus

Type of energy for which the receptor is most sensitive (e.g., light for the eye).

Action potentials are identical in all nerves. How do we know, for example, whether an action potential codes for touch and not cold?

Principle of specific sensory energies

Sensation is determined by the stimulated cortical region!

2. Intensity

Which parameters carry information about stimulus strength?

- frequency of action potentials
- number of activated receptor cells

Weber-Fechner
psychophysical law

$$\psi = \text{const} \cdot \lg \frac{\phi}{\phi_0}$$



Weber (1795-1878)



Fechner (1801-1887)

Stevens' law

$$\psi = \text{const} \cdot \left(\frac{\phi}{\phi_0} \right)^n$$



Stevens (1906-1973)

ψ = sensation strength
 ϕ = background intensity
 ϕ_0 = absolute threshold intensity
 n = constant specific for the type of sensation

$n < 1$: compressive function
(hearing, vision)

$n > 1$: expansive function
(pressure, taste)

3. Duration, adaptation

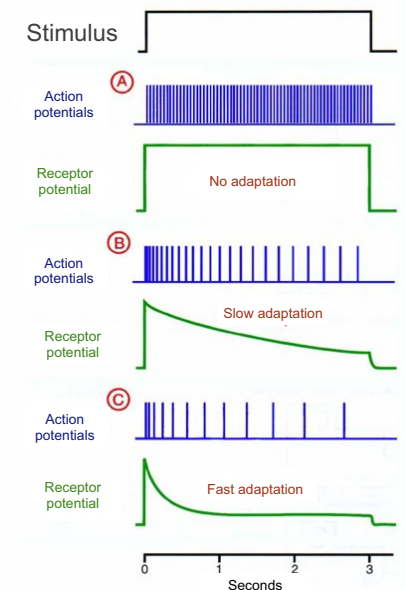
Adaptation. During constant stimulus the frequency of action potentials gradually decreases.

Rapidly adapting (phasic) receptors

E.g., pressure, smell, heat

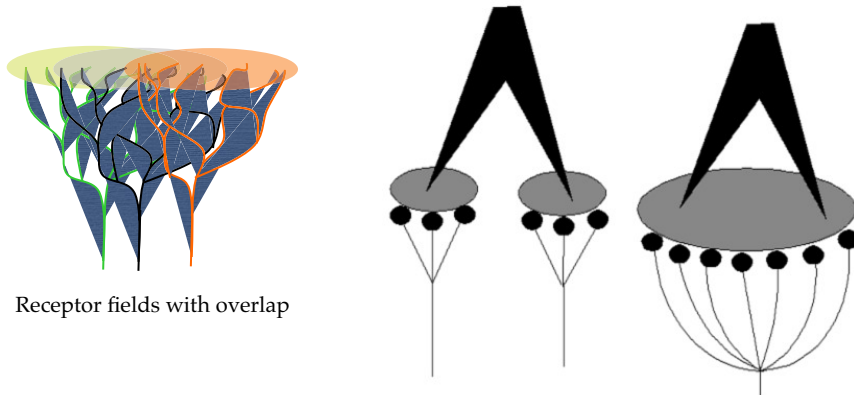
Slowly and partially adapting (tonic) receptors

E.g., cold, pain (dental pain)



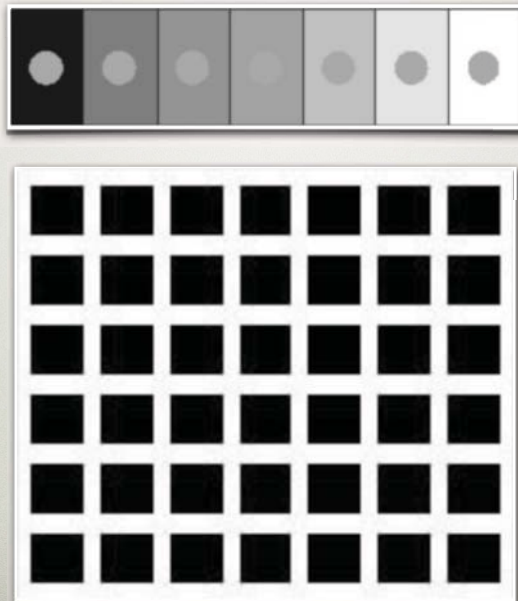
4. Localization, receptor fields

Branched nerve endings define receptor fields (convergence). Such can be found in the skin (touch) and in the peripheral retina (rods).

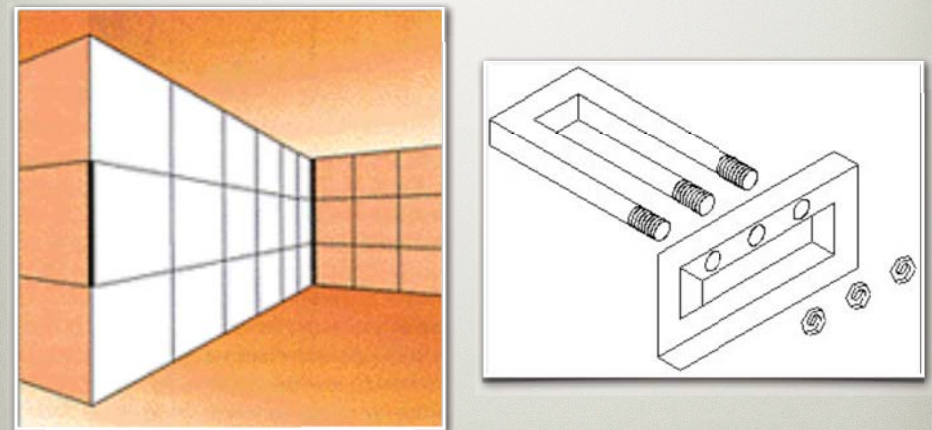


BIOPHYSICS OF THE EYE

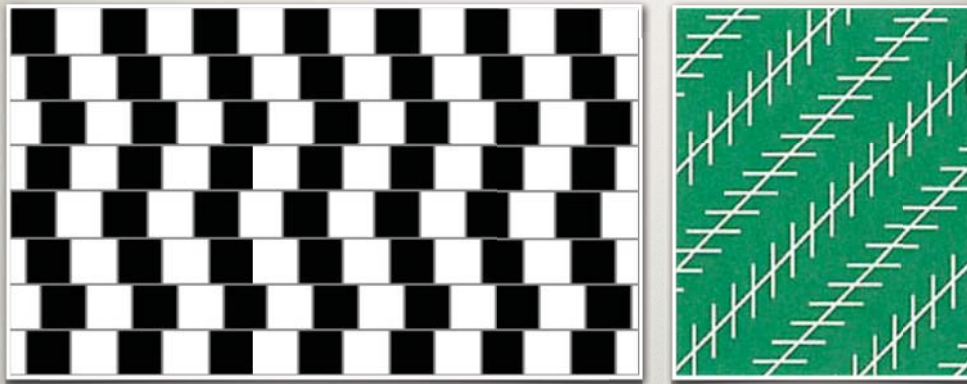
Optical illusions – intensity



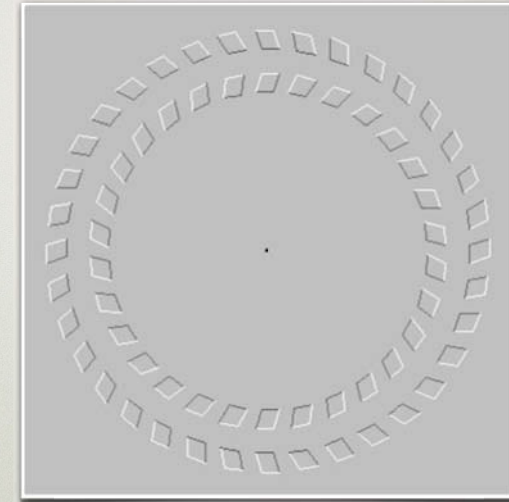
Optical illusions – space



Optical illusions - direction



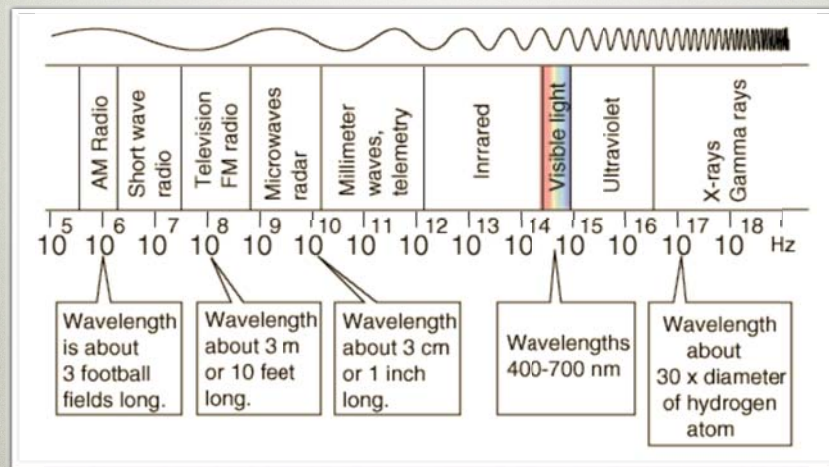
Optical illusions - motion



Optical illusions point out the remarkable and unusual processing power of the visual system.

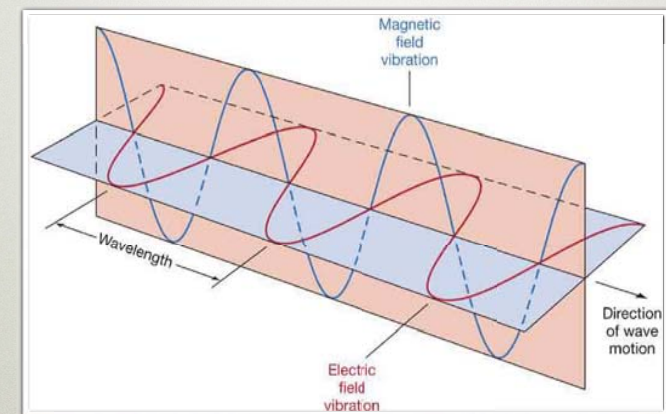
Stimulus: light

Electromagnetic wave



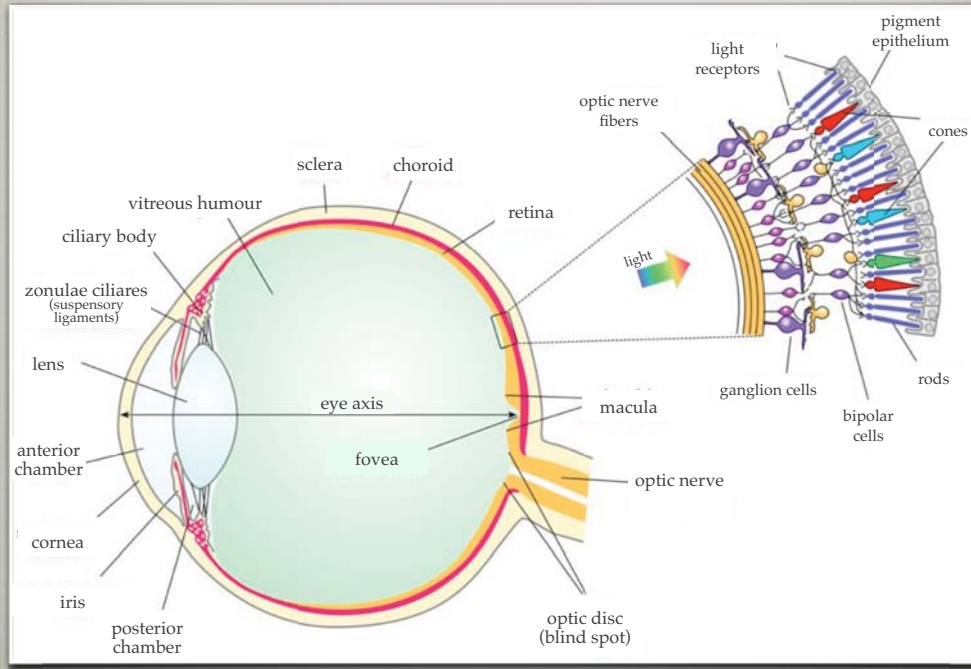
Stimulus: light

Transverse wave

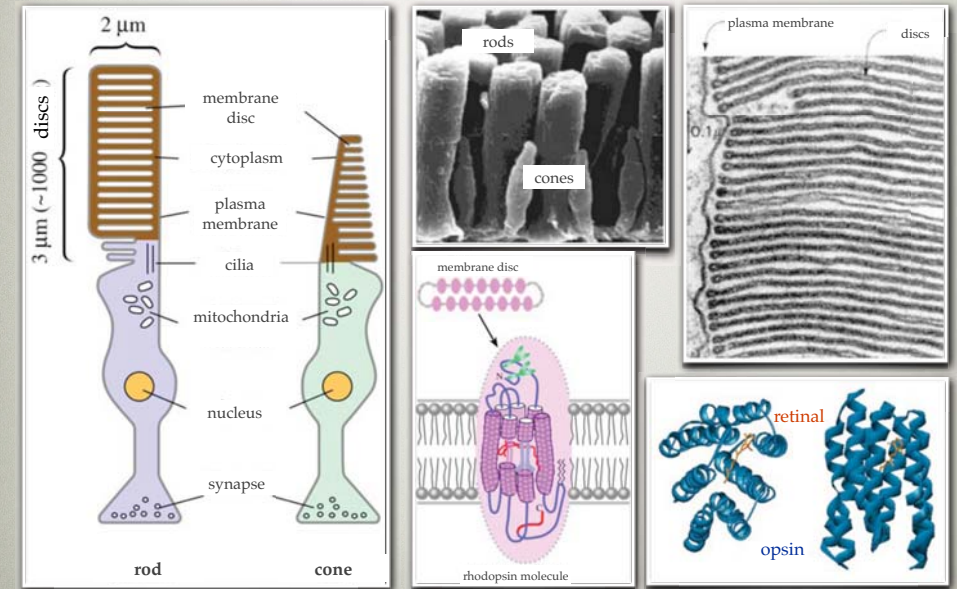


The eye is sensitive to: wavelength and amplitude (~intensity)
The eye is insensitive to: phase and polarization

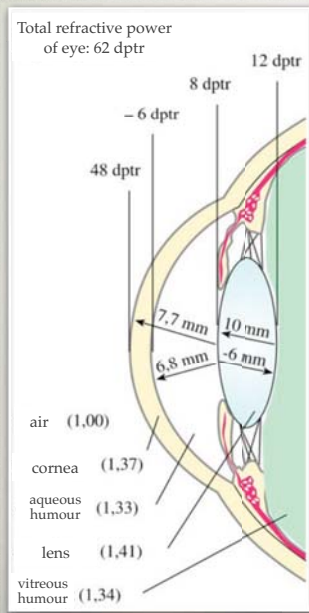
“Receptor-organ”: eye



Photoreceptors



Optics of the eye



Optical power entering the eye (P)

$$P = J\pi \left(\frac{d}{2}\right)^2$$

J=intensity (W/m²)
d=pupil diameter

$$\frac{P_{\max}}{P_{\min}} = \left(\frac{d_{\max}}{d_{\min}}\right)^2 = 16$$

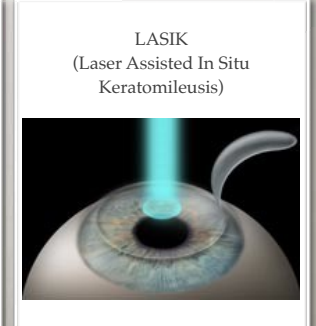
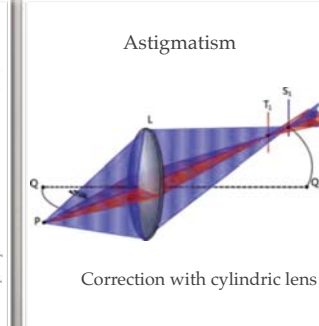
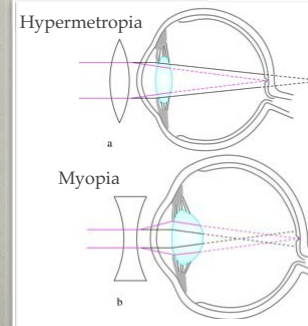
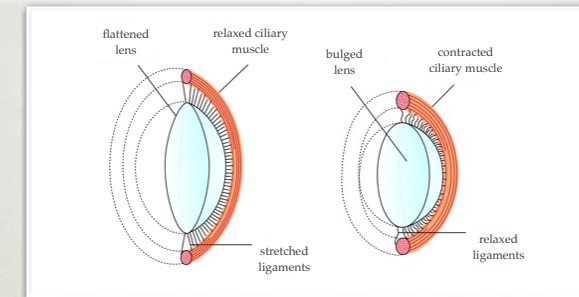
d_{max}=8 mm
d_{min}=2 mm

Refractive power of surfaces (D)

$$D = \frac{n - n'}{r}$$

n-n'=refractive index difference between refractive media
r=radius of curvature of refractive surface

Accommodation and refractive problems



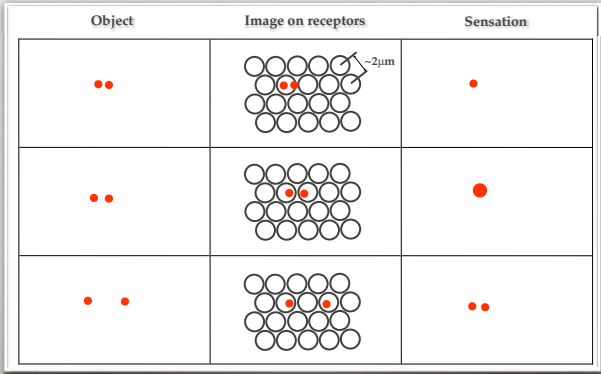
Spatial resolution of the eye

visual angle: the smallest angle at which two object points can be distinguished.

For a healthy eye: 1' (angular minute, 1/60 degree)

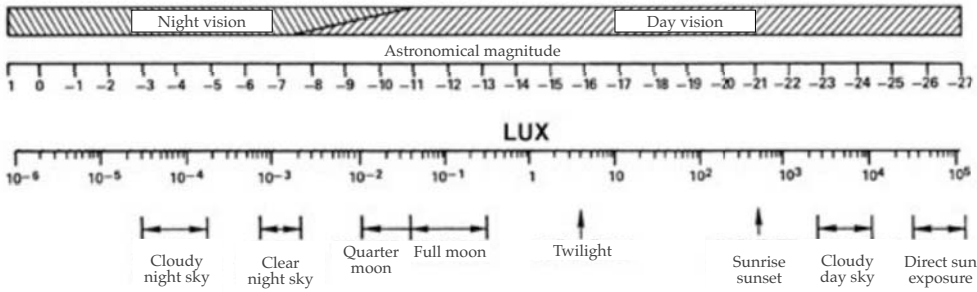
$$visual_acuity = \frac{1'}{\alpha} 100\% \quad \alpha = \text{experimental visual angle}$$

Resolution has wave optics (diffraction) and biological (receptor density) limitations.

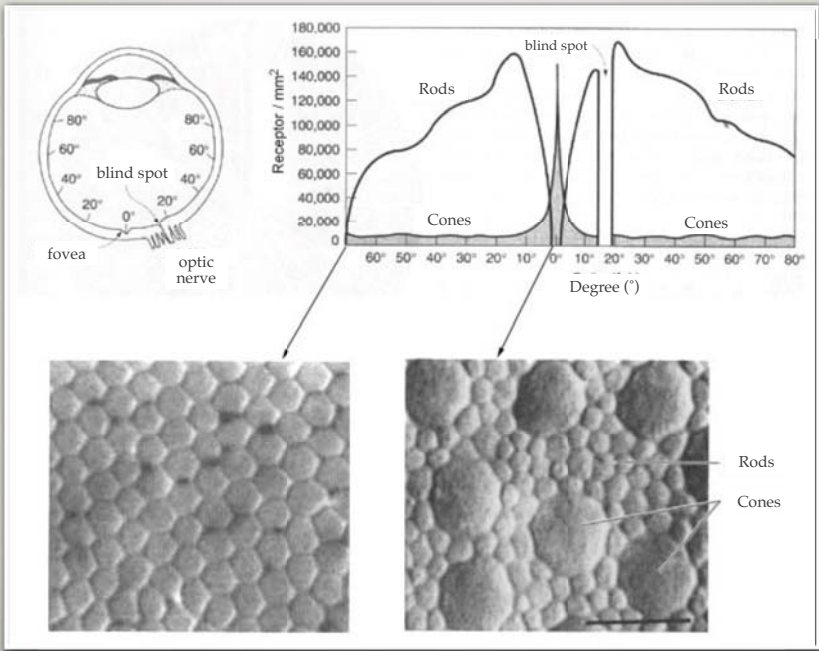


Generation of visual stimulus

Sensitivity of the human eye



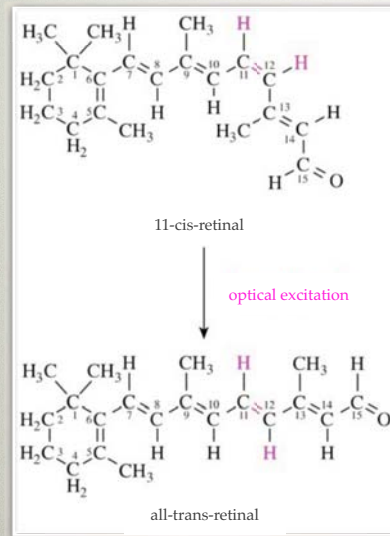
Photoreceptor distribution in retina



Properties of receptor cells

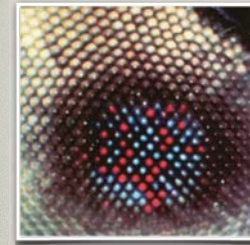
Rod	Cone
Stimulated by very small intensity (optimally 1 photon!)	Smaller sensitivity, but functions at high intensities
Saturates at average intensities	No saturation
Found mainly in the peripheral retina	In the fovea, mainly central fovea
Many rods per ganglion (convergence); greater sensitivity, smaller spatial resolution	Small convergence; greater spatial resolution
No color sensitivity	Sensitivity to colors

Photochemical reaction



1 rhodopsin absorbs 1 photon
 \downarrow
 500 transducin molecules activated
 \downarrow
 500 phosphodiesterase molecules activated, and
 \downarrow
 10^5 cGMP molecules hydrolyzed
 \downarrow
 250 Na^+ -channels closed
 \downarrow
 Entrance of 10^6 - 10^7 Na^+ ions/s inhibited
 \downarrow
 cell hyperpolarized (1 mV)
 \downarrow
 transmitter release reduced (glutamate: inhibitory neurotransmitter).

Color vision

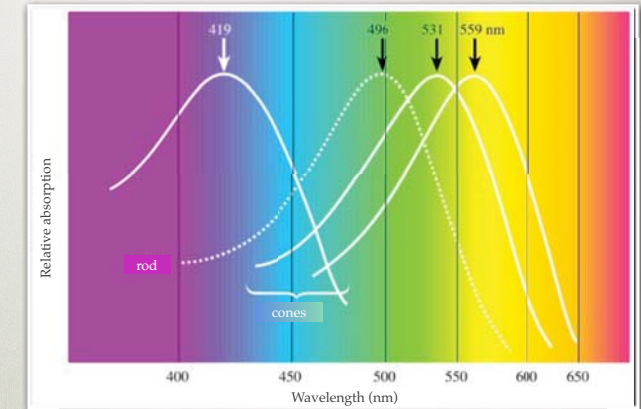


Light reflection from butterfly retina. The different receptors reflect different colors.



Additive color mixing

In human: 3 types of receptors. Each senses different colors - absorbs at different wavelengths (R=64%, G=32%, B=2%).

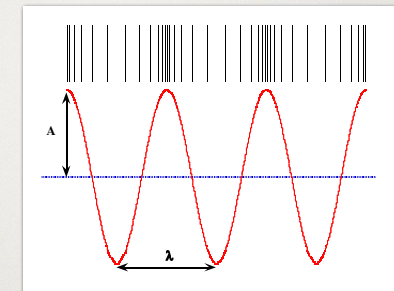


$$X = rR + gG + bB$$

BIOPHYSICS OF HEARING

Stimulus: sound

Longitudinal mechanical wave (pressure wave)



Longitudinal wave

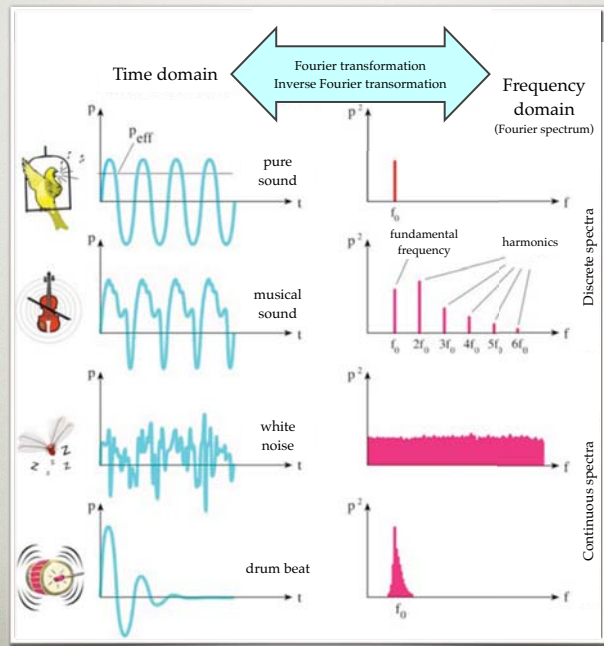


Transverse wave

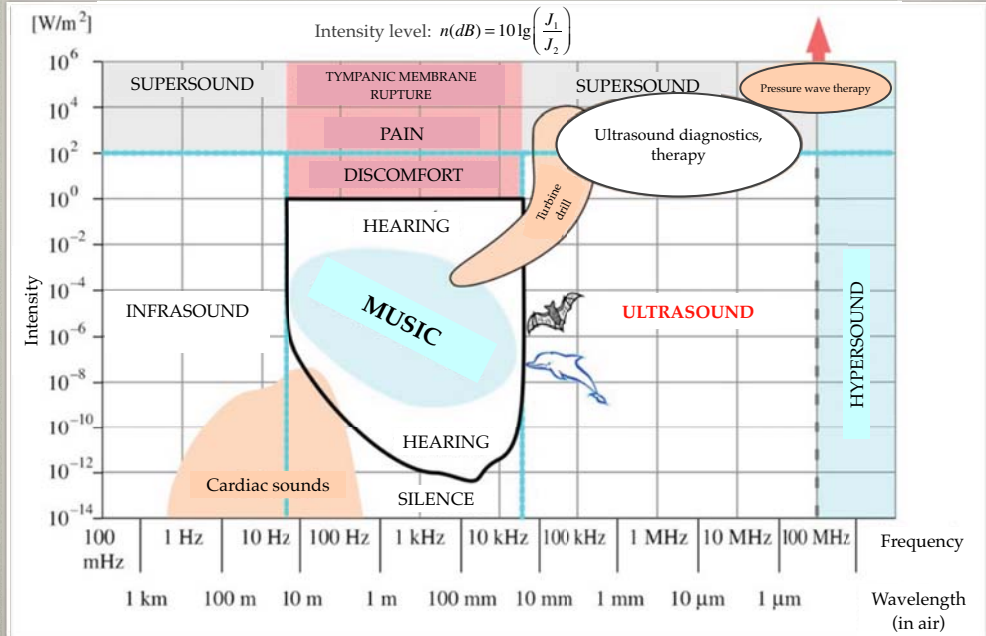
Harmonic oscillation: $y(t) = A \sin(ft + \phi)$

y =actual pressure; t =time
 f =frequency; A =amplitude
 ϕ =phase shift

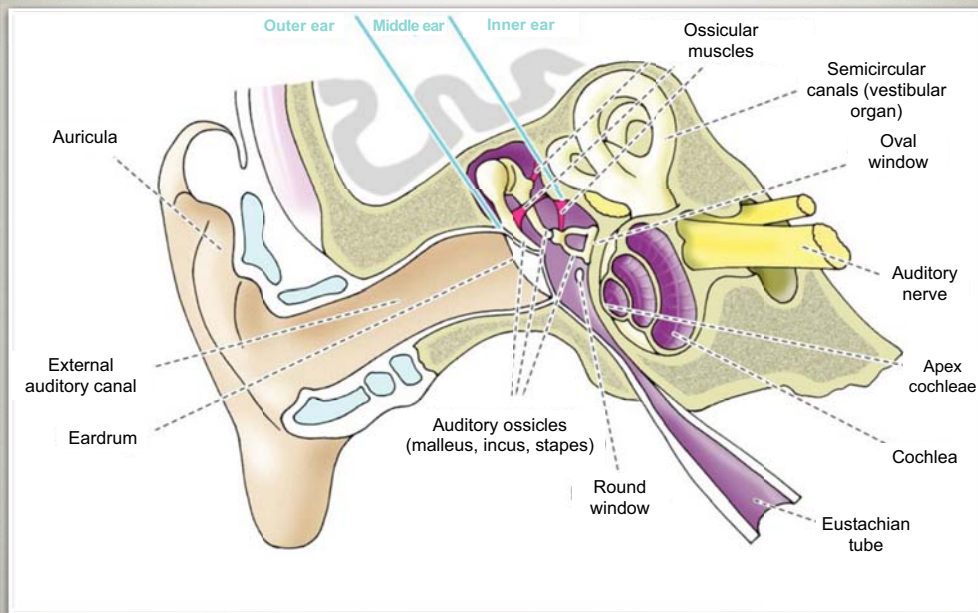
Sounds and their spectra



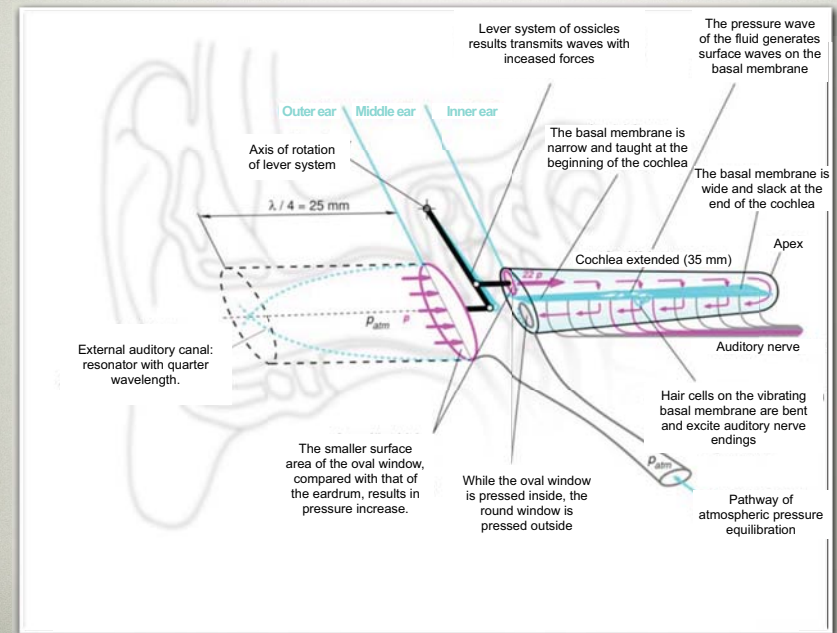
Frequency and intensity of sounds



“Receptor-organ”: ear



Physical schematics of the ear



Outer ear: sound collector

Auricula

Sound is steered into the external auditory canal.

External auditory canal

Conducts pressure waves towards the eardrum. More efficient in certain frequency range (2000-5000 Hz).

Eardrum

Brought into resonance by sound waves.

Middle ear: mechanical amplifier

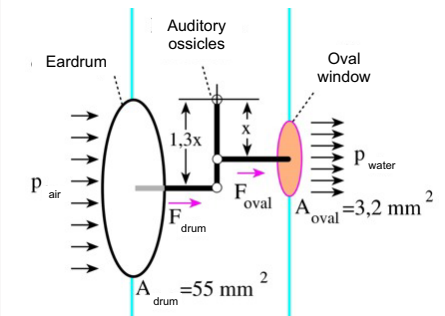
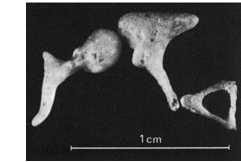
Auditory ossicles (malleus, incus, stapes)

They amplify eardrum resonance and transmit it to the oval window.

Amplification:

due to area ratio: $17 \times$
due to lever action: $1,3 \times$

Total amplification: $22 \times$
(pressure increase)



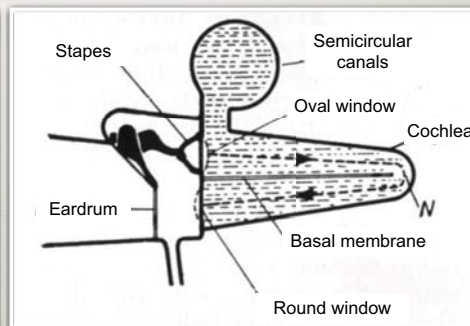
Inner ear: sensor

Vestibular organ: semicircular canals

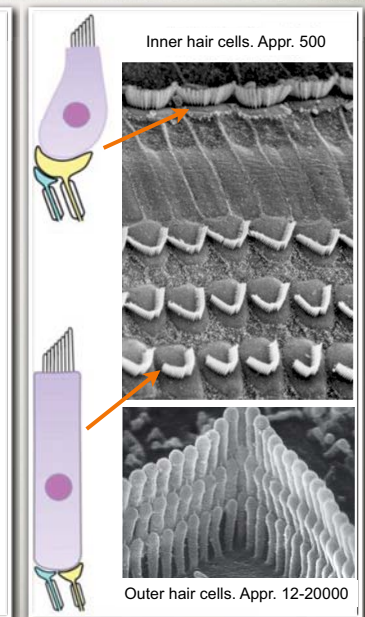
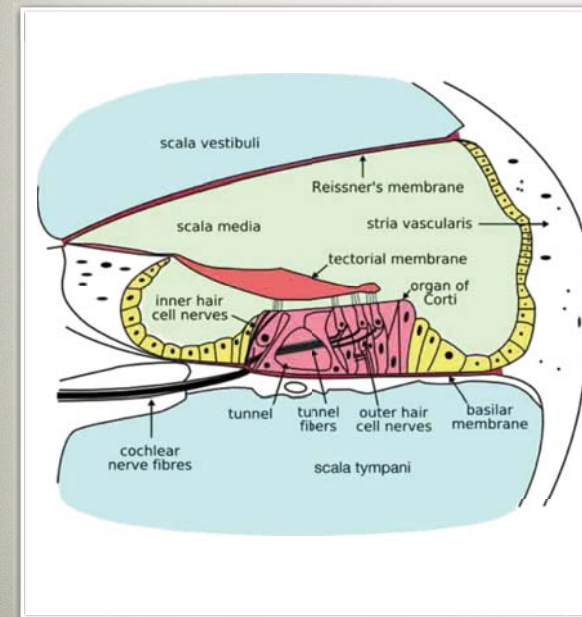
Cochlea: 2.5-pitch, 35-mm-long fluid-filled channel.

It is halved in length partly by an osseous, partly by a membranaeous wall, the *basal membrane*.

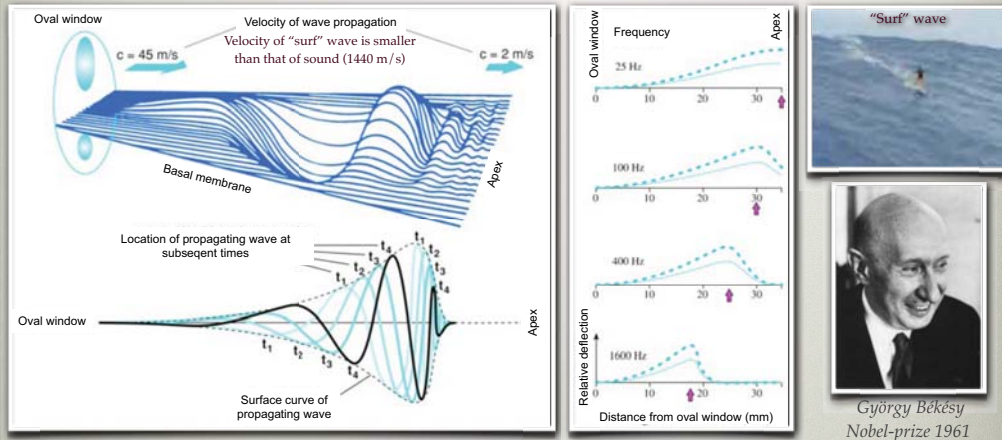
Sensory organ of sound.



Ultrastructure of the inner ear



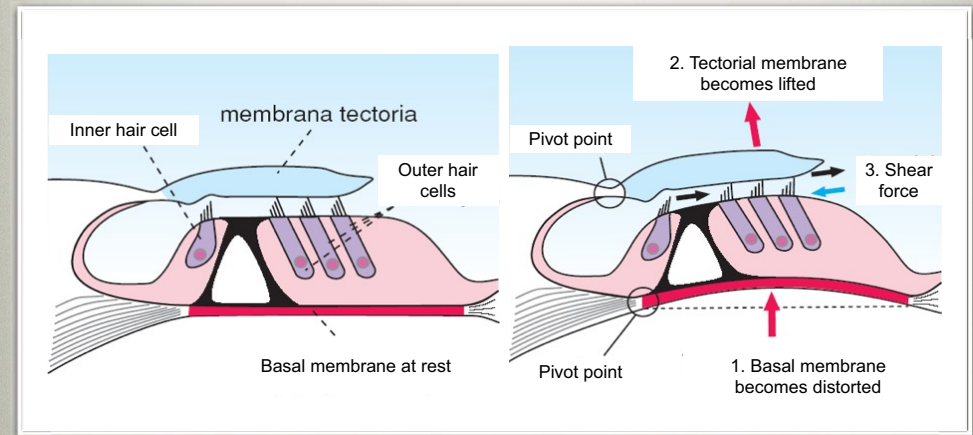
Békésy: propagating surface waves on basal membrane



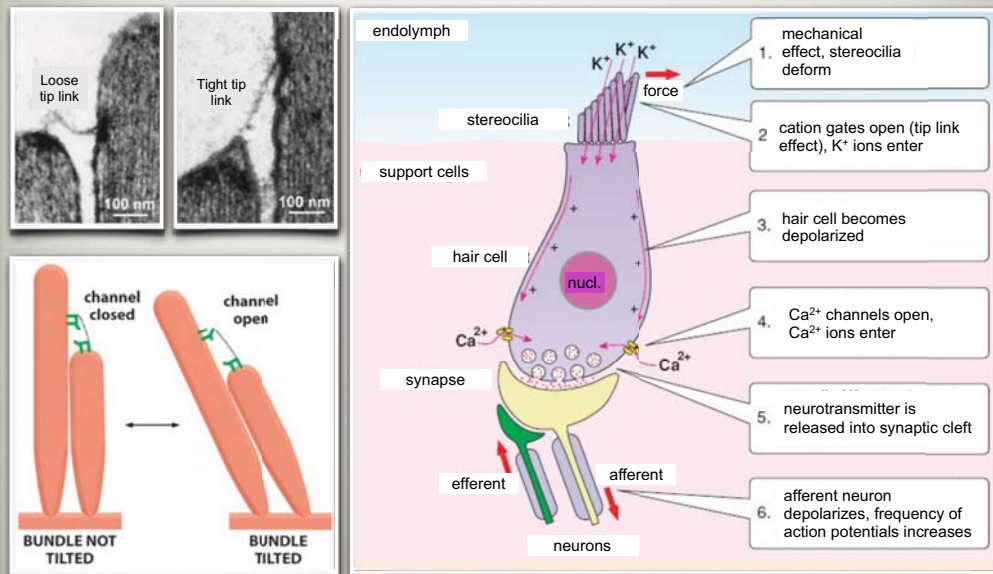
The frequency-dependence of the location of propagating wave maxima provide a rough frequency-discrimination.

Function of the organ of Corti

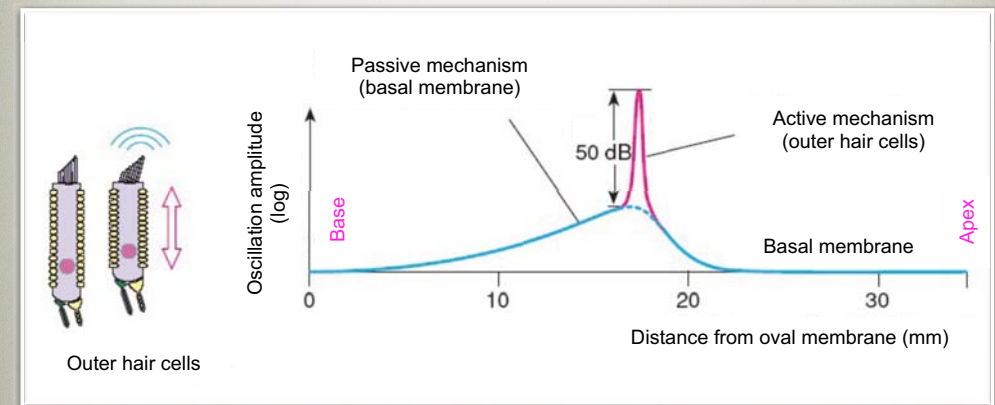
Due to the bending of the basal membrane, hair cells become tilted and depolarized.



Inner hair cells: Mechanoelectric transducers



Outer hair cells: amplifiers



Regenerative amplifier:
positive feedback
(large amplification in narrow frequency range)

Coding of acoustic information

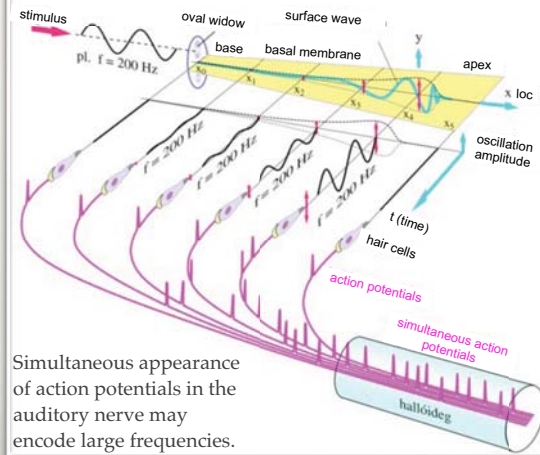
Location theory

Frequency sensing coded locally.

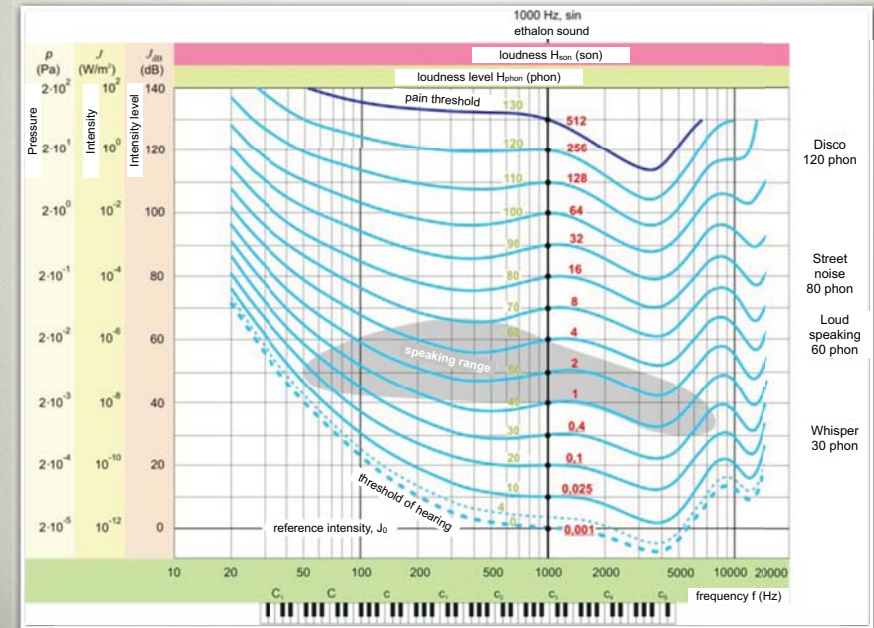
Basis:

1. Weak frequency-dependence of the amplitude maxima of propagating surface waves.
2. Active amplification.
3. Frequency sensitivity of afferent neurons (threshold stimulus depends on frequency).

Volleyball theory



Psychoacoustics: loudness (Fletcher-Munson)



Phon and son scales

