

# FLOW OF FLUIDS AND GASES BLOOD AS FLUID

MIKLÓS KELLERMAYER

## Flow of fluids and gases Physical properties of blood

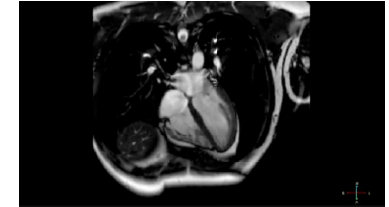
- Basic principles
- Types of fluids
- Types of fluid flow
- Laws of fluid flow
- Blood as a fluid; determinants of blood viscosity

## Importance of the physics of fluids

### I. Hemodynamics

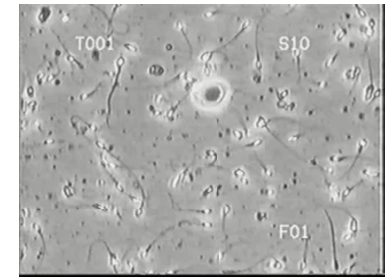
E.g.: What are the characteristics of blood flow in the circulatory system?

(similarly: flow of gases in respiratory system)



### II. Motion in viscous fluids

E.g.: What is the force exerted by a single spermatoocyte during its motion?

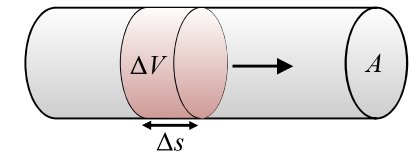


N.B.: gases - in contrast to fluids - are compressible. However, in the physiologically relevant range of pressure differences (~100 Pa), the changes in their volume/density are negligible.

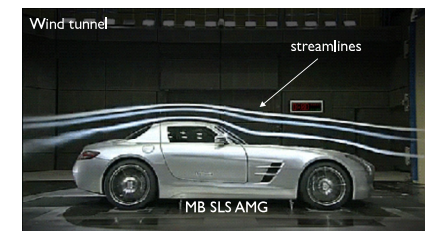
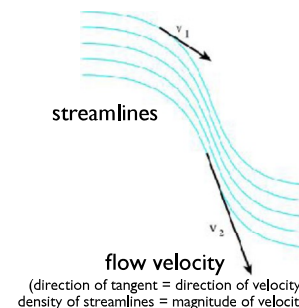
## Basic principles I.

Volumetric flow rate ( $I_V$ ):

$$I_V = \frac{\Delta V}{\Delta t} = A \frac{\Delta s}{\Delta t} = A \bar{v}$$

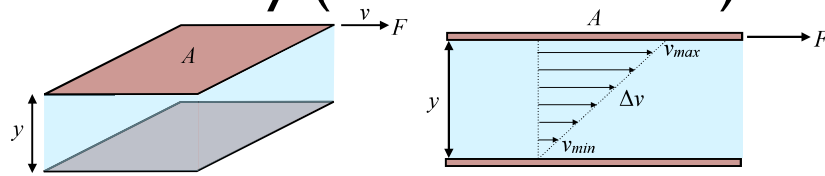


Average velocity:  $\bar{v} = \frac{I_V}{A}$



Flow can be made visible

# Basic principles II. Viscosity (internal friction)



$F$  = shear force  
 $A$  = area of fluid layer  
 $\eta$  = viscosity  
 $v$  = flow velocity  
 $y$  = distance between fluid layers  
 $F/A$  = shear stress ( $\tau$ )  
 $\Delta v/\Delta y$  = velocity gradient ( $D$ )

$$\frac{F}{A} = \eta \frac{\Delta v}{\Delta y} \quad (\text{Newton's friction law})$$

$$\eta = \frac{\tau}{D}$$

Units of viscosity:  $1 \text{ Pas} = 1 \frac{\text{Ns}}{\text{m}^2} = 10 \text{ P (poise)}$

Viscosity of distilled water (25 °C): 1 mPas (1 centipoise)

N.B.: in gases:  $\eta \sim T$   
Momentum exchange between particles acts against the gliding of layers past one another.

fluids:  $\eta \sim e^{E/k_B T}$   
Viscosity decreases with the increase in the relative concentration of vacancies.

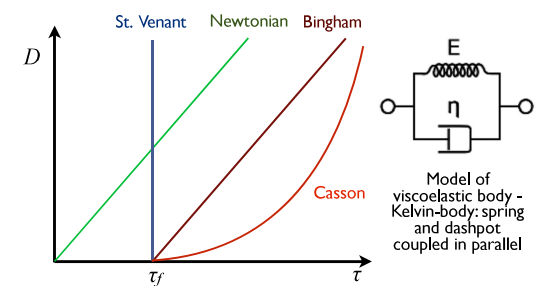
## Types of fluids

1. **Ideal**  
frictionless, incompressible  
 $\rho = \text{constant}$ ,  $\eta = 0$

2. **Non-ideal (real)**  
a. **Newtonian (viscous)**  
 $\eta$  independent of shear stress

b. **Non-newtonian (anomalous)**  
 $\eta$  changes with shear stress

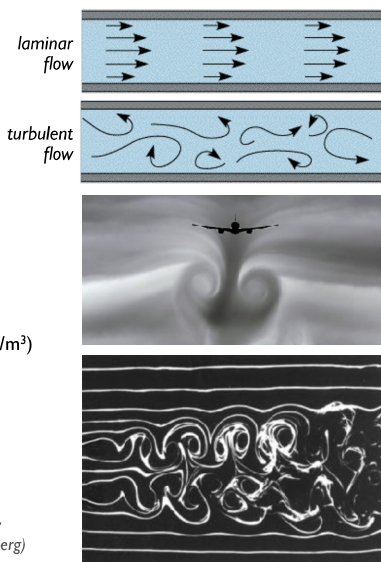
Relationship between velocity gradient and shear stress in **real** fluids



- $\tau_f$  = flow threshold
- Viscoelastic materials: combination of viscous and elastic properties (e.g., solution of polymers, macromolecules)
- Stress-relaxation: decay of stress in rapidly deformed viscoelastic body.
- Blood is a non-newtonian fluid; it displays viscoelastic properties.

## Types of fluid flow

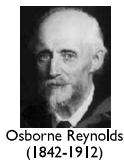
1. **Stationary**  
Volumetric flow rate stays constant (parameters characterizing flow remain unchanged).
2. **Laminar**  
Fluid layers do not mix.
3. **Turbulent**  
Fluid layers mix.



Reynolds number ( $R$ ):

$$R = \frac{vr\rho}{\eta}$$

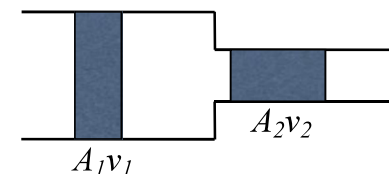
$v$  = flow rate (m/s)  
 $r$  = tube radius (m)  
 $\rho$  = density of fluid (kg/m<sup>3</sup>)  
 $\eta$  = viscosity (Ns/m<sup>2</sup>)



"When I meet God, I am going to ask him two questions: Why relativity? And why turbulence? I really believe he will have an answer for the first." (Werner Heisenberg)

## Laws of flow in ideal fluids I.

Continuity equation:  
volumetric flow rate is constant



$$A_1 v_1 = A_2 v_2 = \text{constant}$$

$A$  = cross-sectional area  
 $v$  = flow velocity

# Laws of flow in ideal fluids II.

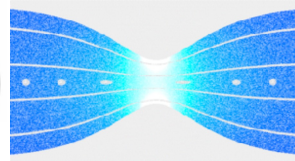
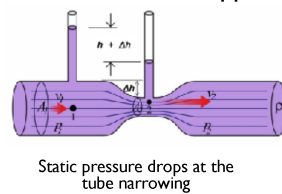
Bernoulli's law - law of conservation of energy



$$p + \frac{1}{2}\rho v^2 + \rho gh = konst$$

$p$  = static pressure  
 $\frac{1}{2}\rho v^2$  = dynamic pressure  
 $\rho gh$  = hydrostatic pressure

Application: Venturi-effect

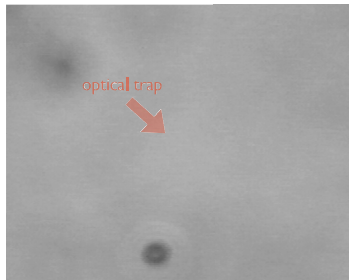


- Double pulse (*pulsus bisferiens*) in aorta insufficiency
- Aspirator (vacuum pump)
- Inspirator (Bunsen-burner)
- Sensors (volumetric flow rate)
- Soda siphon bottle
- Atomizer, spray, carburetor)
- Leadpipe of wind instruments
- Diffuser

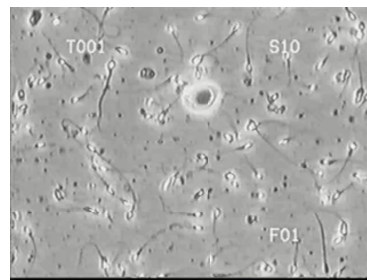
Venturi tube

## Stokes force

Hydrodynamic drag force (Stokes force):  $F = \gamma v = 6r\pi\eta v$



Affects stationary objects in moving fluid (microbead captured in optical trap)

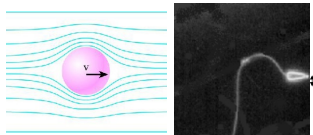


Affects objects moving in stationary fluid (moving spermatozoa)

How much force is exerted by a single spermatozyte during its movement?

$$\gamma = 6r\pi\eta = 6 \cdot 1.6 \times 10^{-6} \cdot \pi \cdot 10^{-3} = 3 \times 10^{-8} \text{ N s/m}$$

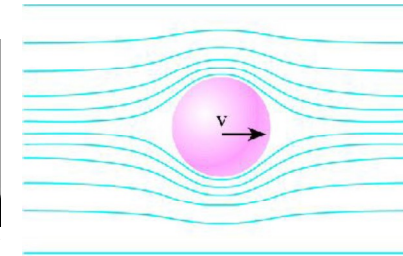
$$F = \gamma v = 3 \times 10^{-8} \text{ N s/m} \cdot 5 \times 10^{-5} \text{ m/s} = 1.5 \times 10^{-12} \text{ N} = \boxed{1.5 \text{ pN}}$$



$r = 1.6 \mu\text{m} = 1.6 \times 10^{-6} \text{ m}$   
 $v = 50 \mu\text{m/s} = 5 \times 10^{-5} \text{ m/s}$   
 $\eta = 10^{-3} \text{ Pas}$

# Laws of flow in viscous fluids I.

Stokes' law



$$F = \gamma v = 6r\pi\eta v$$

$F$  = force  
 $\gamma$  = drag coefficient (shape factor)  
 $v$  = flow rate  
 $r$  = radius of sphere  
 $\eta$  = viscosity

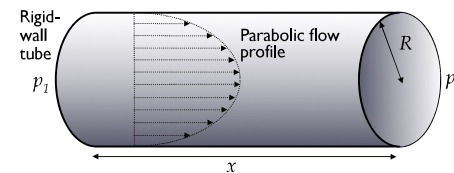
# Laws of flow in viscous fluids II.

Hagen-Poiseuille's law

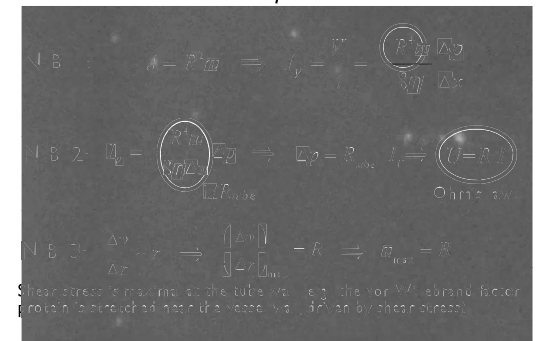


Thermodynamic current	Relevant intensive variable (its difference maintains current)	Current density	Physical law
Volumetric flow	Pressure (p)	$J_V = -\frac{R^2}{8\eta} \frac{\Delta p}{\Delta x}$	Hagen-Poiseuille

$$J_V = \frac{V}{tA} = \frac{R^2}{8\eta} \frac{\Delta p}{\Delta x}$$

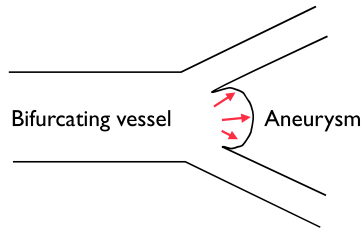


$V$  = volume  
 $t$  = time  
 $R$  = tube radius  
 $\eta$  = viscosity  
 $p$  = pressure  
 $x$  = tube length  
 $V/t = J_V$  = volumetric flow rate  
 $\Delta p/\Delta x$  = pressure gradient, maintained by  $p_2 - p_1$  (negative!)  
 $A$  = cross-sectional area of tube  
 $J_V$  = volumetric flow rate



# Medical significance of fluid flow

Bernoulli's law:



**Formation of aneurysm (pathological expansion of blood vessel):**

- Expansion of vessel: diameter increases
- Flow rate decreases, according to continuity equation
- Static pressure increases due to Bernoulli's law
- Aneurysm pregreduates - positive feedback mechanism leading to catastrophe

Hagen-Poiseuille's law:

$$\frac{V}{t} = \frac{R^4 \pi \Delta p}{8 \eta \Delta x}$$

Flow intensity, hence the delivered oxygen quantity, may be **drastically reduced** in certain pathological conditions:

- constriction of blood vessels (e.g., diabetes, B rger's disease)
- change in blood viscosity (e.g., fever, anaemia)
- Reduction of vessel diameter by half leads to a reduction of volumetric flow by 1/16!

# Blood as a fluid

<b>55-60% of body mass is water</b> 42 kg (70 kg body mass)		
2/3 intracellular 28 kg	1/3 extracellular 14 kg	
	1/3 plasma 4-5 kg	2/3 intersticium 9-10 kg

**Blood:** Average volume: 5 l  
Average viscosity: 5 mPas  
Average density: 1.05 g/cm<sup>3</sup>  
Composition: 40-45 % corpuscular, 55-60 % plasma

## Determinants of blood viscosity

**1. Hematocrit (htc,  $\phi$ ):**

$$htc = \frac{V_{cells}}{V_{total}}$$

Normal range: 0.4-0.5.

Viscosity of blood as suspension  
(in the physiologically relevant htc range):

$$\lg \eta_s = A + B\phi$$

$\eta_s$ =suspension viscosity

A, B=empirical constants

## Determinants of blood viscosity

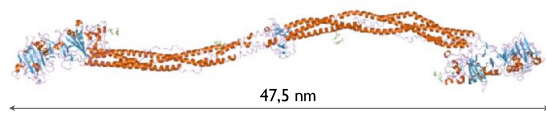
**2. Plasma viscosity**

- Depends on plasma proteins.
- In *paraproteinaemias* (e.g. myeloma multiplex or plasmocytoma) the concentration of immunoglobulins is high, leading to increased viscosity.

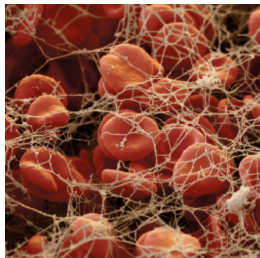
Plasma protein	Normal concentration	% ratio	Function
Albumin	35-50 g/l	55%	maintenance of colloind osmotic pressure, transport
Globulins	20-25 g/l	38%	Part of the immune system
Fibrinogen	2-4.5 g/l	7%	Blood coagulation



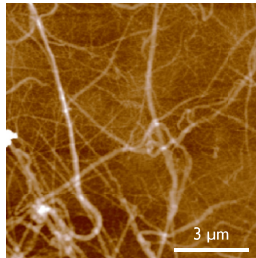
# Fibrinogen, fibrin



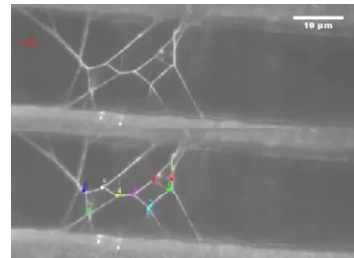
**Fibrinogen:**  
MW = 340.000 Da  
In plasma: 2-4 g/l  $\approx$  10  $\mu$ M  
Average nearest-neighbor distance  $\approx$  55 nm



Red blood cells in fibrin meshwork



Fibrin polymerized in vitro (AFM)

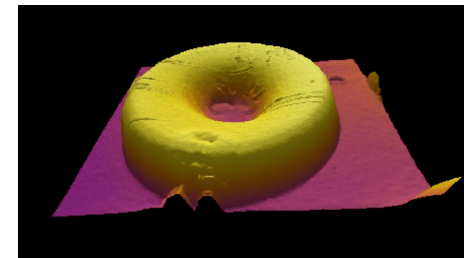


Extensibility of fluorescently labeled fibrin fibrils

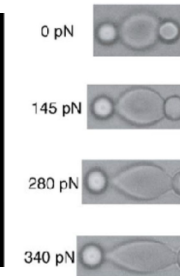
## Determinants of blood viscosity

### 3. Plasticity of red blood cells

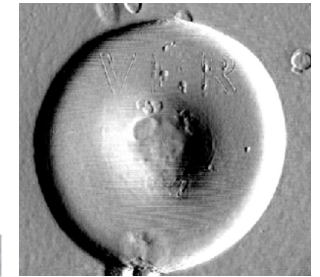
- 65% suspension of blood-cell-size particles is rock hard.
- By contrast, a 95% blood suspension is fluid, with viscosity of  $\sim$ 20 mPas!
- Deformation of red blood cells: droplet, parachute, arrowhead shapes.



Disc-shaped cell with 7-11  $\mu$ m diameter



Deformation of a RBC with optical tweezers

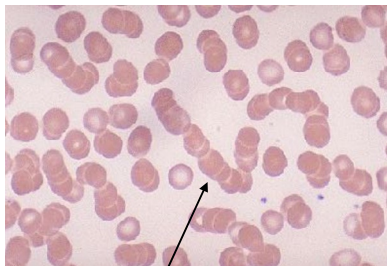


Fixed RBC maintaining impression (AFM)

## Determinants of blood viscosity

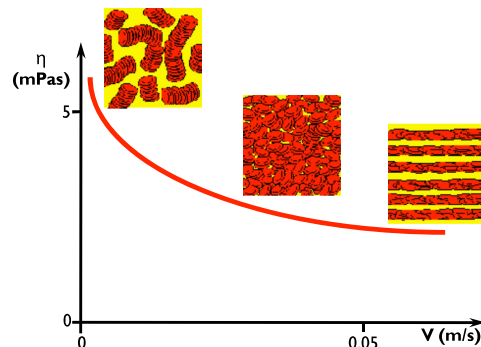
### 4. Aggregation of red blood cells

- Stack or rouleaux formation.
- More pronounced at low flow rates



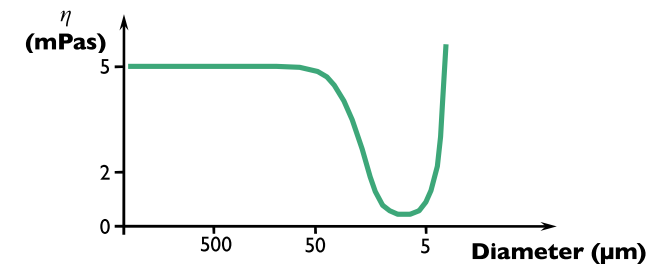
Rouleaux (stack)

### 5. Flow rate, velocity gradient



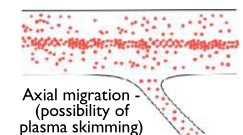
## Determinants of blood viscosity

### 6. Blood vessel diameter



#### N.B.:

- With a decrease of vessel diameter, the anomalous (non-newtonian) behavior of blood becomes more pronounced.
- *Axial migration*: the red blood cells line up in the axis of the vessel (Bernoulli's law). In the axis the velocity gradient decreases, and near the vessel wall it increases. Increase in velocity gradient decreases apparent viscosity (Fåhræus-Lindquist effect).



Axial migration - (possibility of plasma skimming)