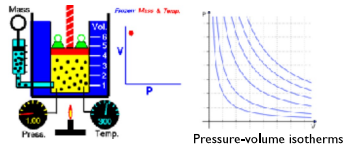


RESPIRATORY BIOPHYSICS

MIKLÓS KELLERMAYER

Relevant physical and physico-chemical laws

1. Ideal gas law (derives from Clausius-Clapeyron's, Boyle-Mariotte's, Charles's laws): Relationship between the pressure, volume, temperature and amount of gas.



$$PV = nRT$$

P = pressure (Pa)
 V = volume (m^3)
 n = amount (moles)
 R = gas constant ($8.314 \text{ J K}^{-1} \text{ mol}^{-1}$)
 T = absolute temperature (K)

2. Dalton's law (John Dalton, 1801): The total pressure exerted by the mixture of non-reactive gases is equal to the sum of the partial pressures of individual gases.

$$P_{\text{total}} = \sum_{i=1}^n p_i$$

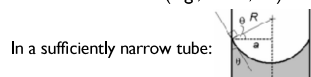
p_i = partial pressure of the i th gas
 n = number of gases in the mixture
 $[p_i = P_{\text{atm}} \times r_i; r_i = \text{ratio of the gas in the mixture}]$

3. Henry's law (William Henry, 1803): At a constant temperature, the amount of a given gas that dissolves in a given type and volume of liquid is directly proportional to the partial pressure of that gas in equilibrium with that liquid.

$$p = k_H c$$

p = partial pressure (Pa; atm)
 k_H = Henry's constant ($\text{l} \cdot \text{atm} / \text{mol}$)
 c = concentration of dissolved gas (mol/l)

4. Young-Laplace equation: Describes the capillary pressure difference sustained across the interface between two static fluids (e.g., water, air) due to surface tension.



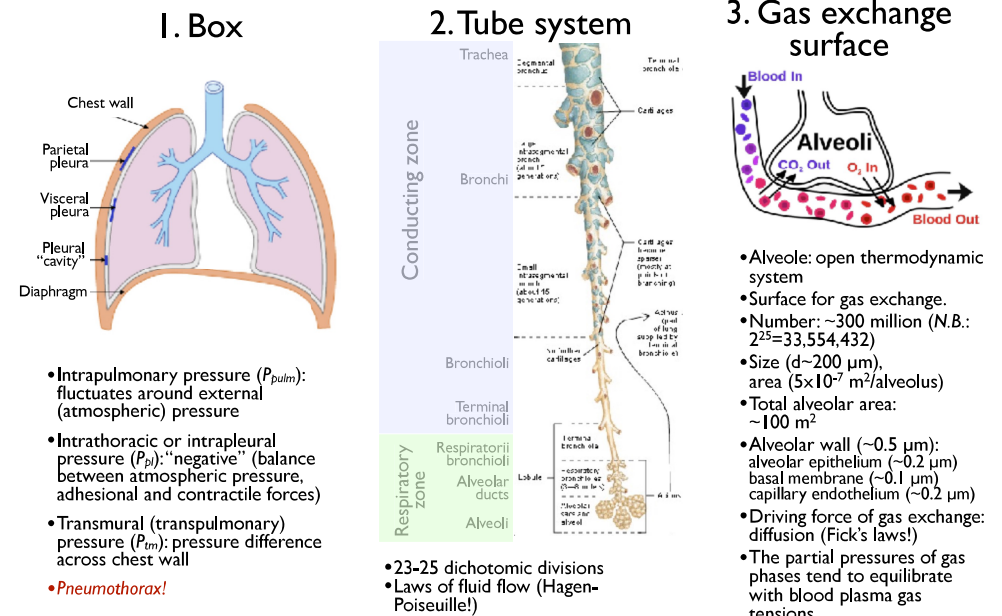
$$\Delta p = \frac{2\gamma}{R}$$

p = pressure (Nm^{-2})
 γ = surface tension ($\text{Nm}^{-1}; \text{Jm}^{-2}$)
 R = radius of curvature

History of respiratory biophysics

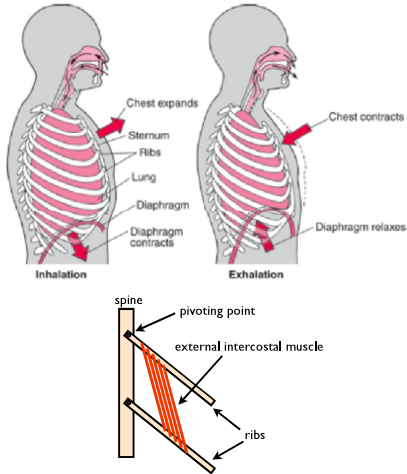
- Aristotle (300 BC): respiration cools the heart and blood
- Galenus (170 BC): breathing adds something to the blood ("*spiritus vitalis*")
- Leonardo da Vinci (1452-1519): animals die in a closed room where air refreshment is blocked.
- Vesalius (1543): the animal dies if its chest is opened, but survives if its lung is rhythmically ventilated.
- Gas laws (17-18. century, Clausius, Clapeyron, Boyle, Mariotte, Gay-Lussac, Charles)
- Black (1754): discovery of carbon dioxide. Priestley (1771): discovery of oxygen.
- "Blood gases": Magnus (1837), Haldane (1900)
- Surfactant: Neergaard (1920s), Pattle and Clements (1950s)

Simplified respiratory system



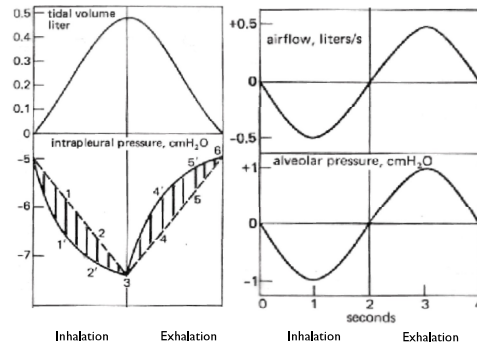
Respiratory cycle

I. Mechanical control



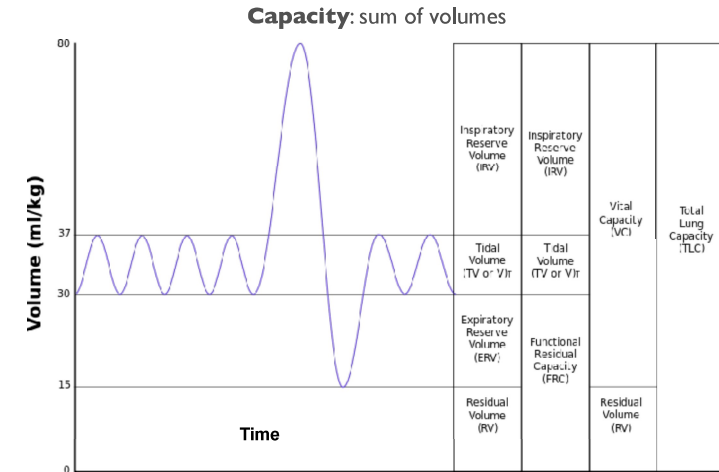
- Eupnoe: normal breathing (14-16/min)
- Polypnoe, tachypnoe: number of breaths > 16/min
- Dyspnoe: shortness of breath

2. Changes in physical parameters



$$1 \text{ cmH}_2\text{O} = 0.1 \text{ kPa} = 0.7 \text{ mmHg}$$

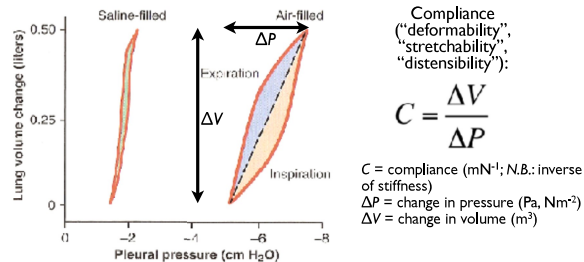
Pulmonary volumes and capacities



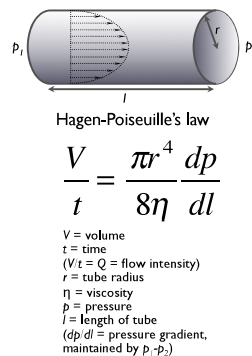
Volume	Value (litres)		Average value (litres)		Derivation
	In men	In women	In men	In women	
Inspiratory reserve volume	3.3	1.9	4.8	3.1	IRV plus TV plus ERV
Tidal volume	0.5	0.5	3.8	2.4	IRV plus TV
Expiratory reserve volume	1.0	0.7	2.2	1.8	ERV plus RV
Residual volume	1.2	1.1	6.0	4.2	IRV plus TV plus ERV plus RV

Processes of the respiratory cycle

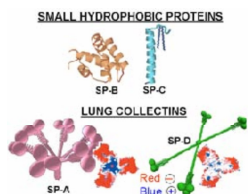
I. Lung cyclically expands and contracts



2. Gas flows in airways



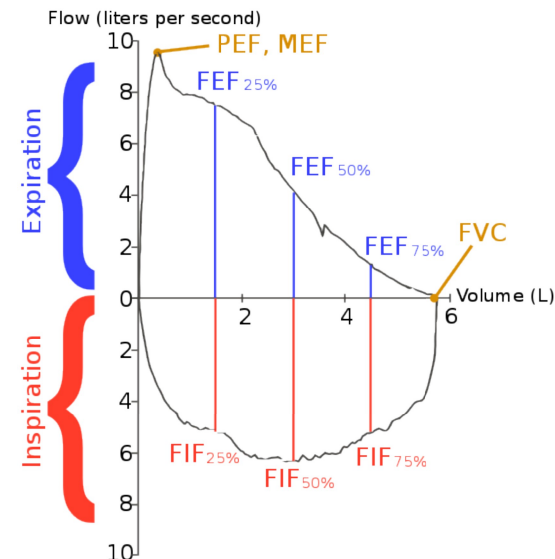
Surfactant



- Pulmonary surfactant: surface-active lipoprotein complex (phospholipoprotein) formed by (type II) alveolar cells (starting from the 20th gestational week).
- Composition: 90 % phospholipids, 10 % proteins ("surfactant protein" SP-A, SP-B, SP-C, SP-D)
- Function: reduces surface tension
- Effect: the smaller the surface tension, the smaller pressure needed to keep alveoli open (for a given pressure, smaller alveoli can be opened) (Young-Laplace equation!).
- Restrictive diseases: pulmonary compliance is reduced (fibrosis, lack of surfactant, etc.).

- Normally (eupnoe): flow is laminar.
- Tachypnoe or disease: turbulent airflow
- Obstructive diseases: pulmonary airflow is compromised (COPD = "chronic obstructive pulmonary disease").

Dynamic analysis of respiration



Spirometry:

- PEF, MEF: peak expiratory flow, maximal expiratory flow
- FEF: forced expiratory flow
- FIF: forced inspiratory flow
- FVC: forced vital capacity

Respiratory work

- Volume change against average transmural pressure
- Minute volume (MV) = 7 l
- Breathing rate (BR) = 14/min
- Pressure (P_{tm}) = 0.7 kPa
- Respiratory volume (V) = 0.5 l ($5 \times 10^{-4} \text{ m}^3$)
- Work (W) = $P_{tm} \times V = 0.35 \text{ J/inspiration}$ (294 J/h)
- At large loads it may reach 8400 J/h

PHYSICAL BASIS OF PHYSICAL EXAMINATION

Physical examination

- Inspection
- Palpation
- Percussion
- Auscultation

Inspection

What is this?

Visual examination of the patient

What do we visualize?

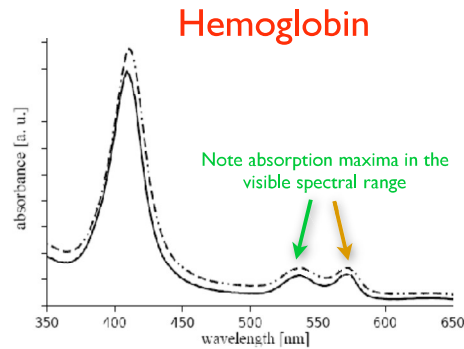
Behavior, morphology, structure, **color**

Relationship to biophysics:

Absorption spectroscopy

Light absorption

Examples



From the general law of radiation attenuation:

$$J = J_0 e^{-\mu x}$$

$$\lg \frac{J_0}{J} = \mu x \lg e$$

$$\lg \frac{J_0}{J} \approx \mu$$

absorbance, optical density

$$\lg \frac{J_0}{J} = \epsilon_{\lambda} c x$$

Lambert-Beer's Law

ϵ_{λ} = molar extinction coefficient

c = concentration



Cyanosis
(rise in deoxygenated hemoglobin)



Icterus
(jaundice, hyperbilirubinaemia)



Erythema
(redness of the skin)

Palpation

What is this?

Examining the patient by touching

What do we palpate?

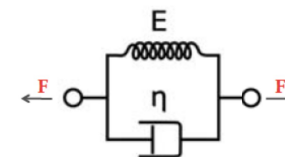
Size, shape, location, **firmness**
(elasticity, viscosity)

Relationship to biophysics:

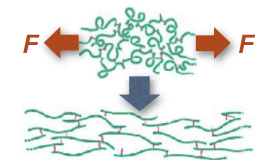
Biomechanics

Viscoelasticity

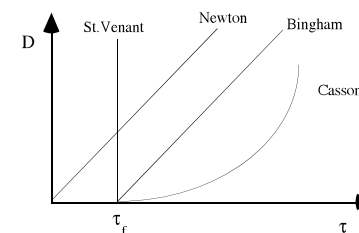
Spring-dashpot model



Schematic mechanism



Velocity gradient versus shear stress function of newtonian and non-newtonian fluids



Example: edema (pitting)

Percussion

What is this?

Examining the patient by locally striking (tapping) with short, sharp blows

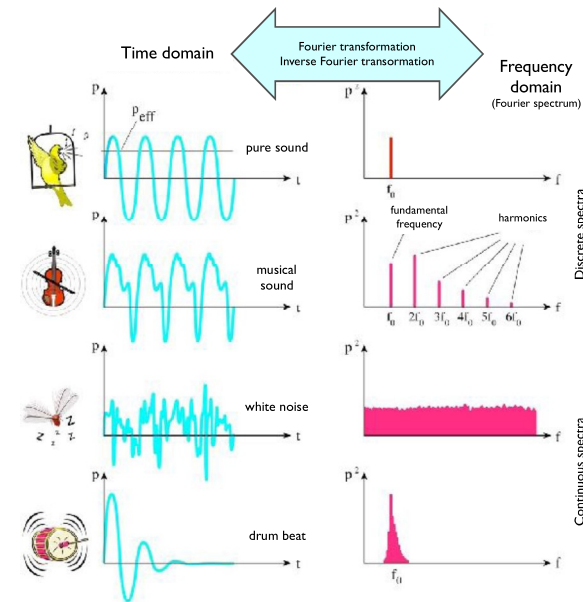
What do we examine by percussion?

Material content, shape, boundaries

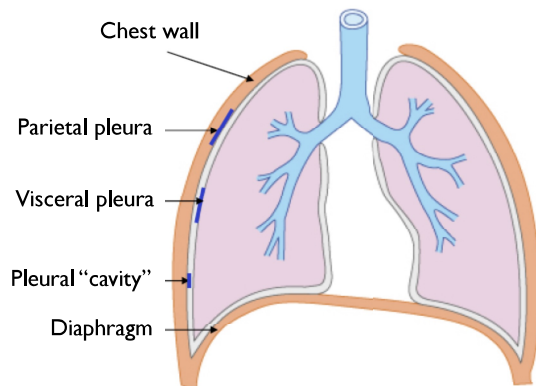
Relationship to biophysics:

Sound generation, propagation and detection

Sounds and their spectra



Respiratory system as a box



Percussion sounds may be flat (muscle), dull (liver), or resonating (normal lung)

Boundaries of the diaphragm, heart, liver (and other, parenchymal organs) may be detected by percussion.

Auscultation

What is this?

Examining the patient by listening (with a stethoscope) for sounds (murmurs) within the body

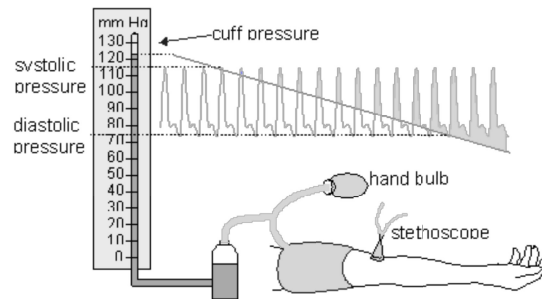
What do we examine by auscultation?

Loudness, pitch, tone, duration, temporal variation (rhythm)

Relationship to biophysics:

Sound generation, propagation, fluid flow, turbulence

Korotkow's sound

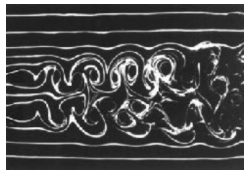


1. tapping
2. swishing
3. knocking
4. muffling

Reynolds number:

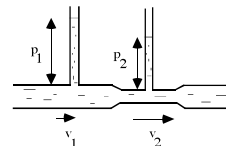
$$R = \frac{vr\rho}{\eta}$$

v =flow rate (m/s)
 r =tube radius (m)
 ρ =density of fluid (kg/m³)
 η =viscosity (Ns/m²)



Turbulent flow ($R > \sim 1000$) causing sound effects

Bernoulli's law

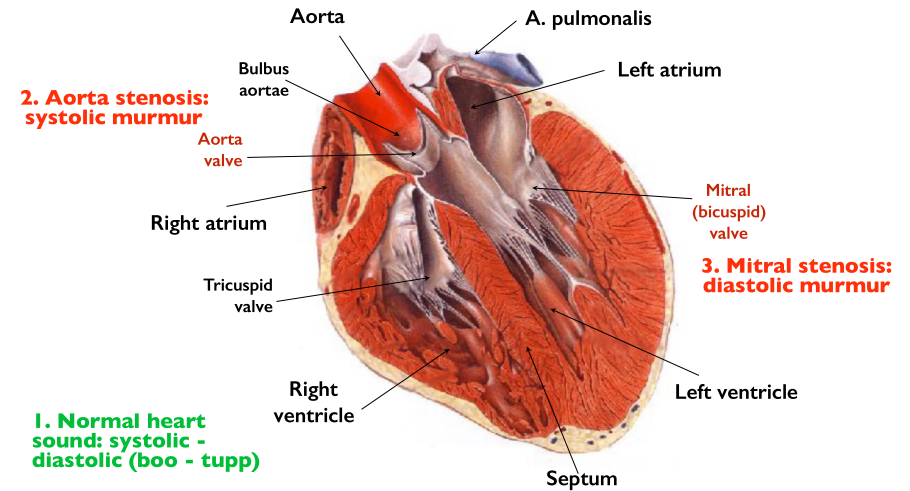


Fluctuation of static and dynamic pressures resulting in rapid opening and closing of brachial artery

Heart sounds and murmurs

Sources: mechanical vibrations (e.g., valve closing), turbulent flow

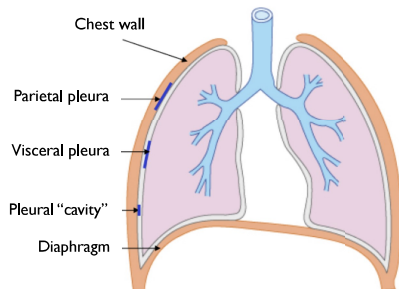
Conductance: towards blood-filled compartments



Respiratory sounds

Sources and mechanisms:

1. mechanical vibrations (rubbing noise)
2. mechanical resonance (organ-pipe action)
3. bubbling through fluid



1. pleural rub
 (friction between pleural walls)

Conducting zone

Trachea

Bronchi

Bronchioli

Terminal bronchioli

Tracheobronchial sounds

2. wheeze, stridor
 (airway obstruction)

Respiratory zone

Respiratory bronchioli

Alveolar ducts

Alveoli

Vesicular sounds

3. crackles
 (fine, medium, coarse; bubbling through ducts)
-crepitation
 (alveolar opening-closing)

