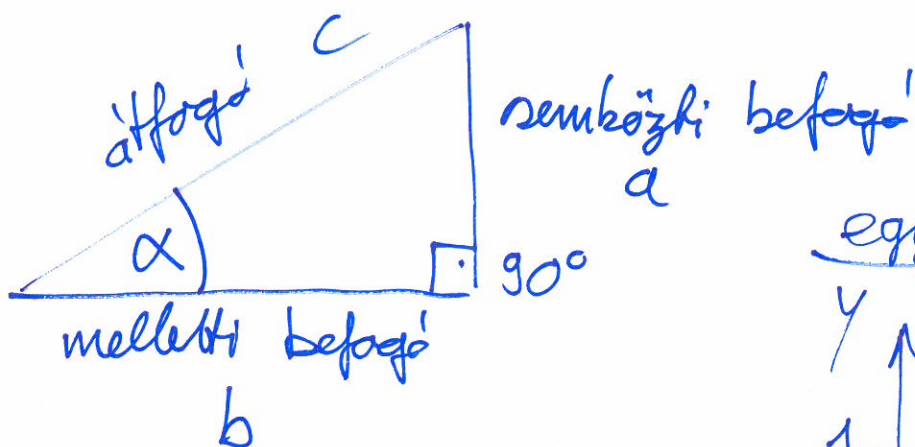


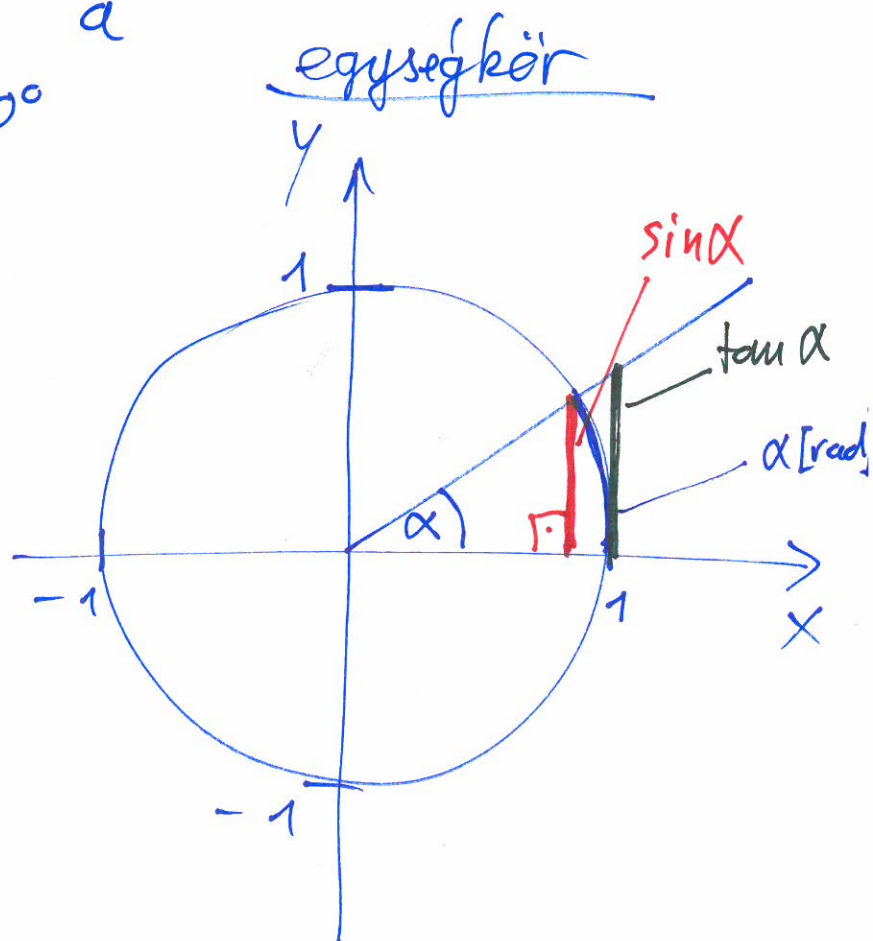
teljes szög: $\frac{2\pi \cdot r}{r} = 2\pi \text{ [rad]} = 360^\circ$



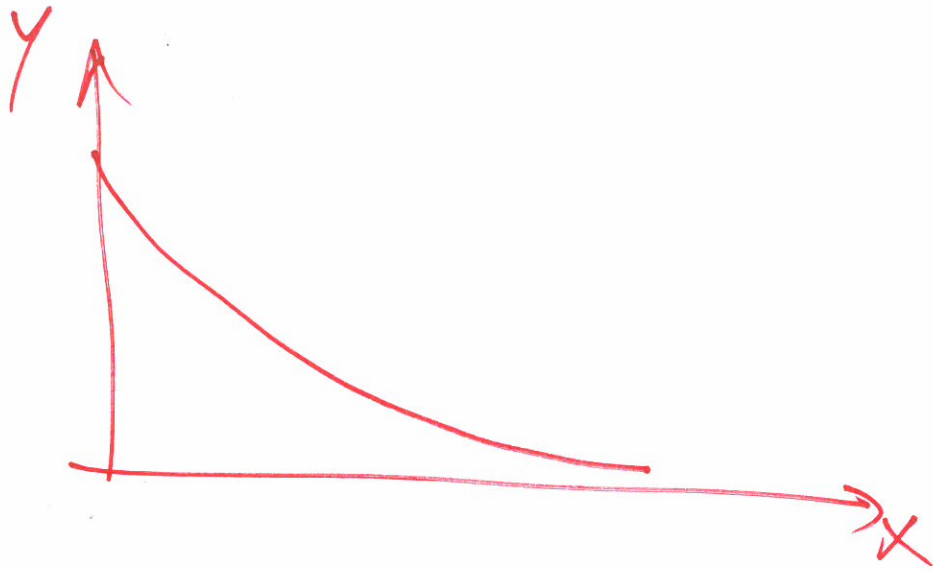
$$\sin(\alpha) = \frac{a}{c}$$

$$\cos(\alpha) = \frac{b}{c}$$

$$\tan(\alpha) = \frac{a}{b}$$



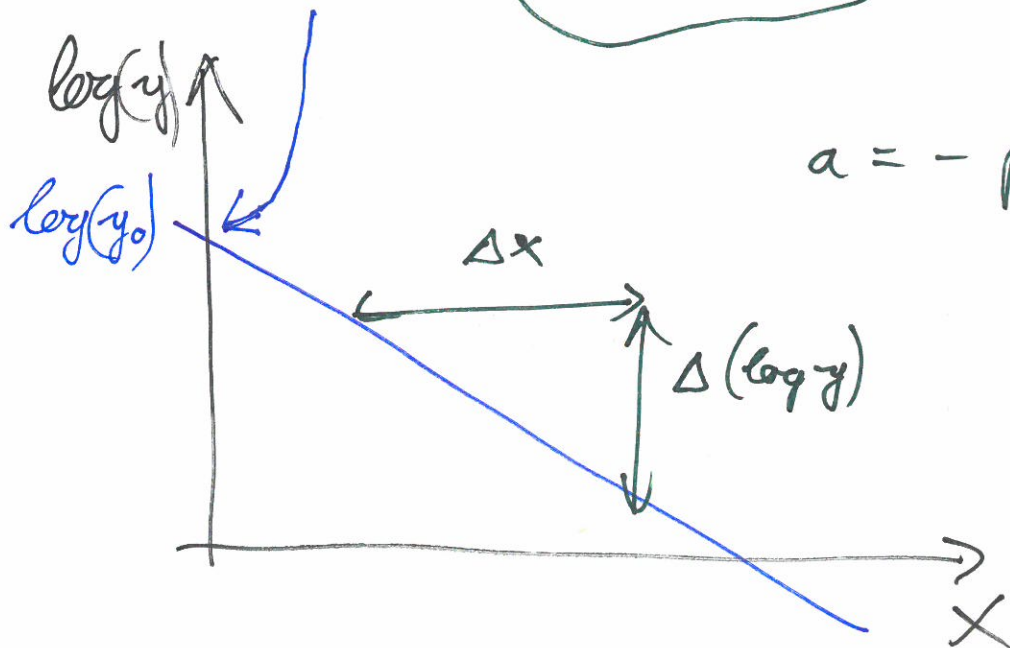
$$e = 2.718 \dots$$



$$y = y_0 \cdot e^{-px}$$

$$\begin{aligned} \log(y) &= \log(y_0 \cdot e^{-px}) \\ &= \log(y_0) + \log(e^{-px}) \end{aligned}$$

$$\log(y) = \log(y_0) - p \cdot x \cdot \log(e)$$



$$a = -p \cdot \log(e)$$