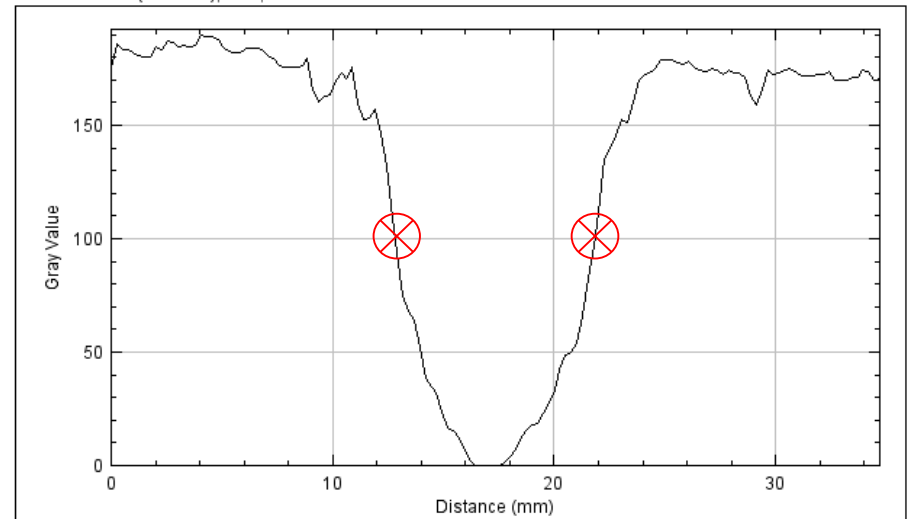


$$y = a e^{-\frac{(x-b)^2}{2c^2}}$$

$$FWHM = 2\sqrt{2 \ln 2} c \approx 2,35482c$$

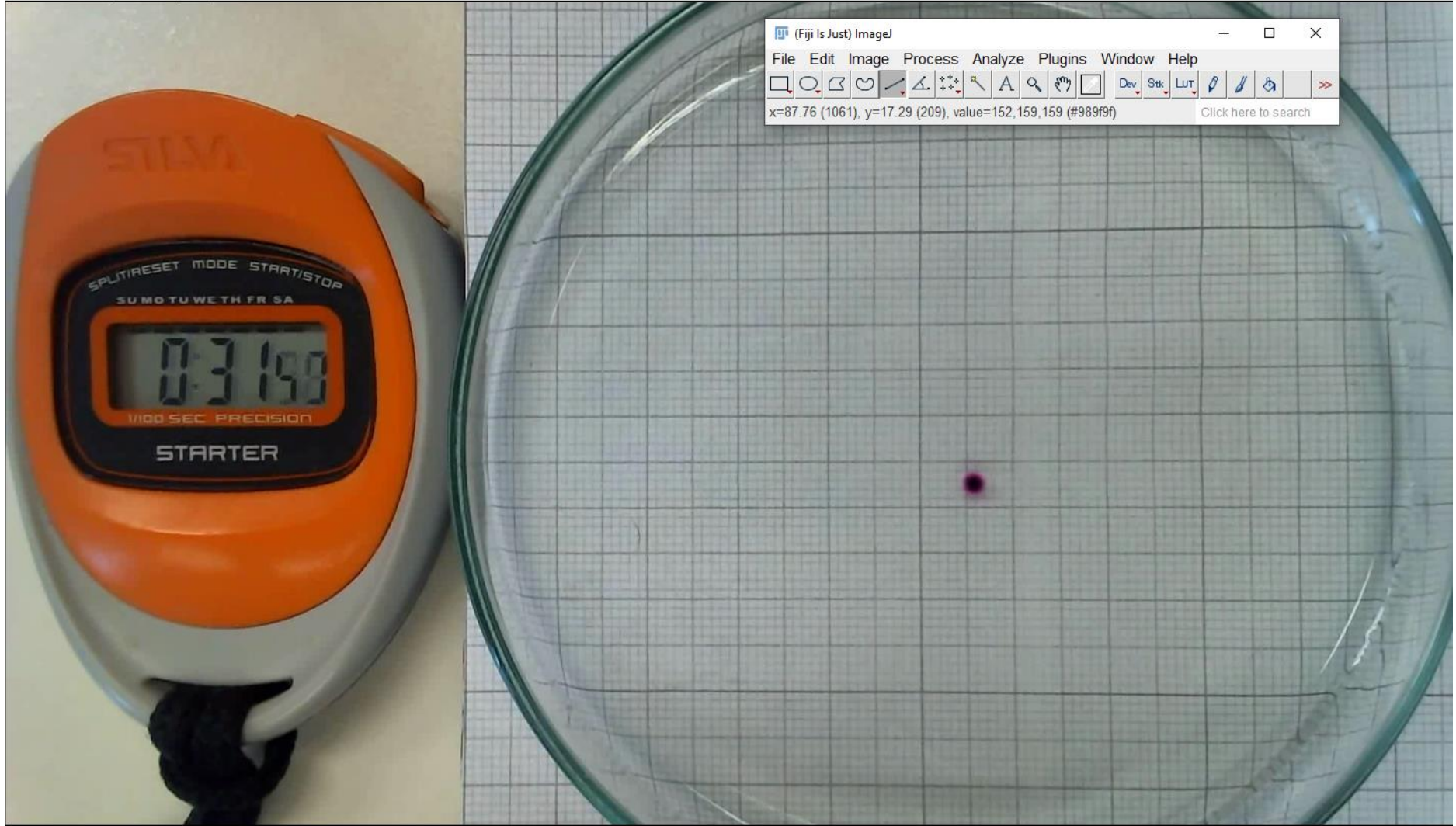


40.14x227.51 (613x355); 8-bit; 213K

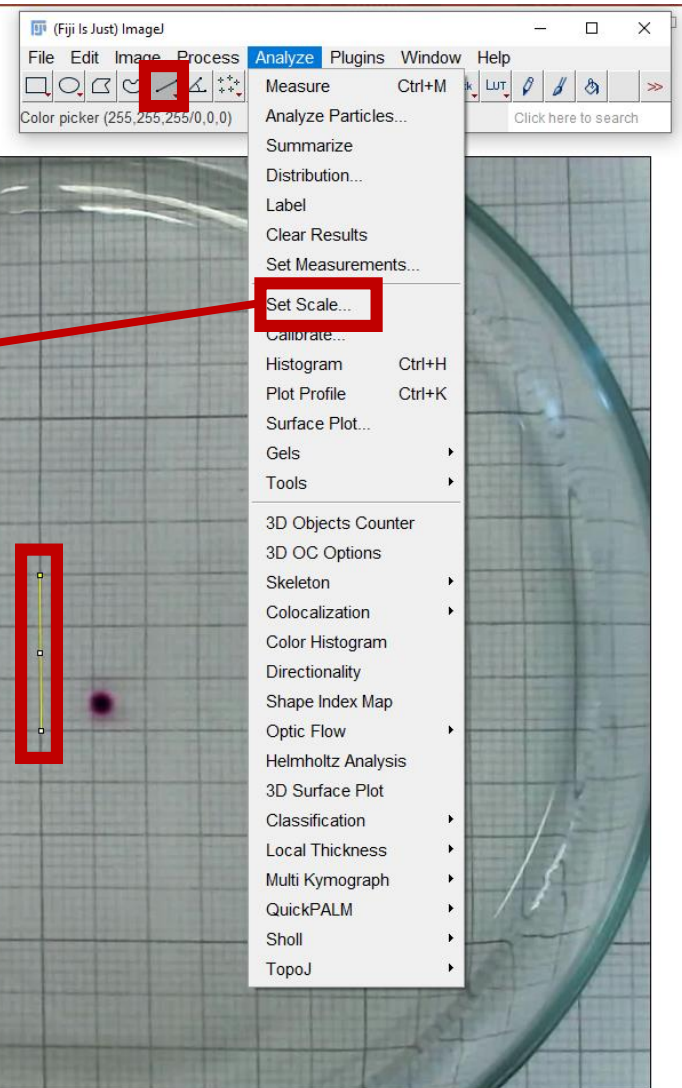
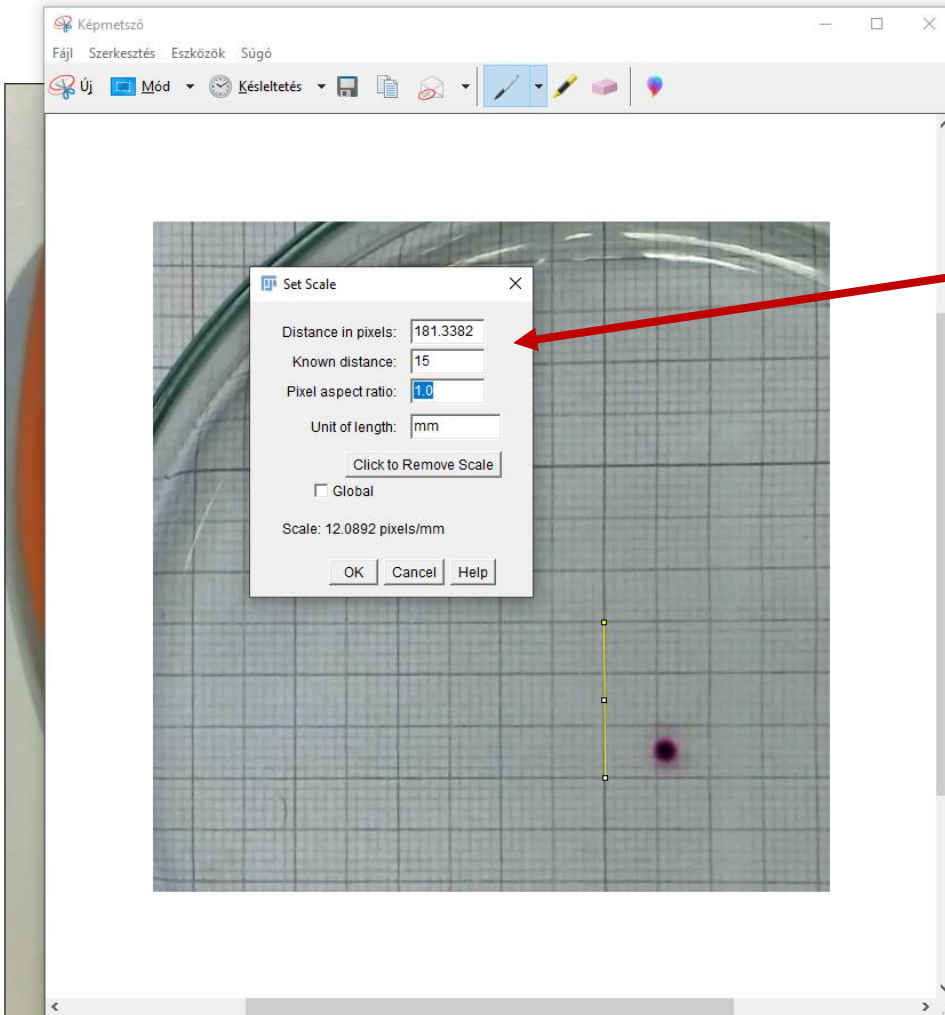


List Data » More » Live X=12.92, Y(X)=93.6

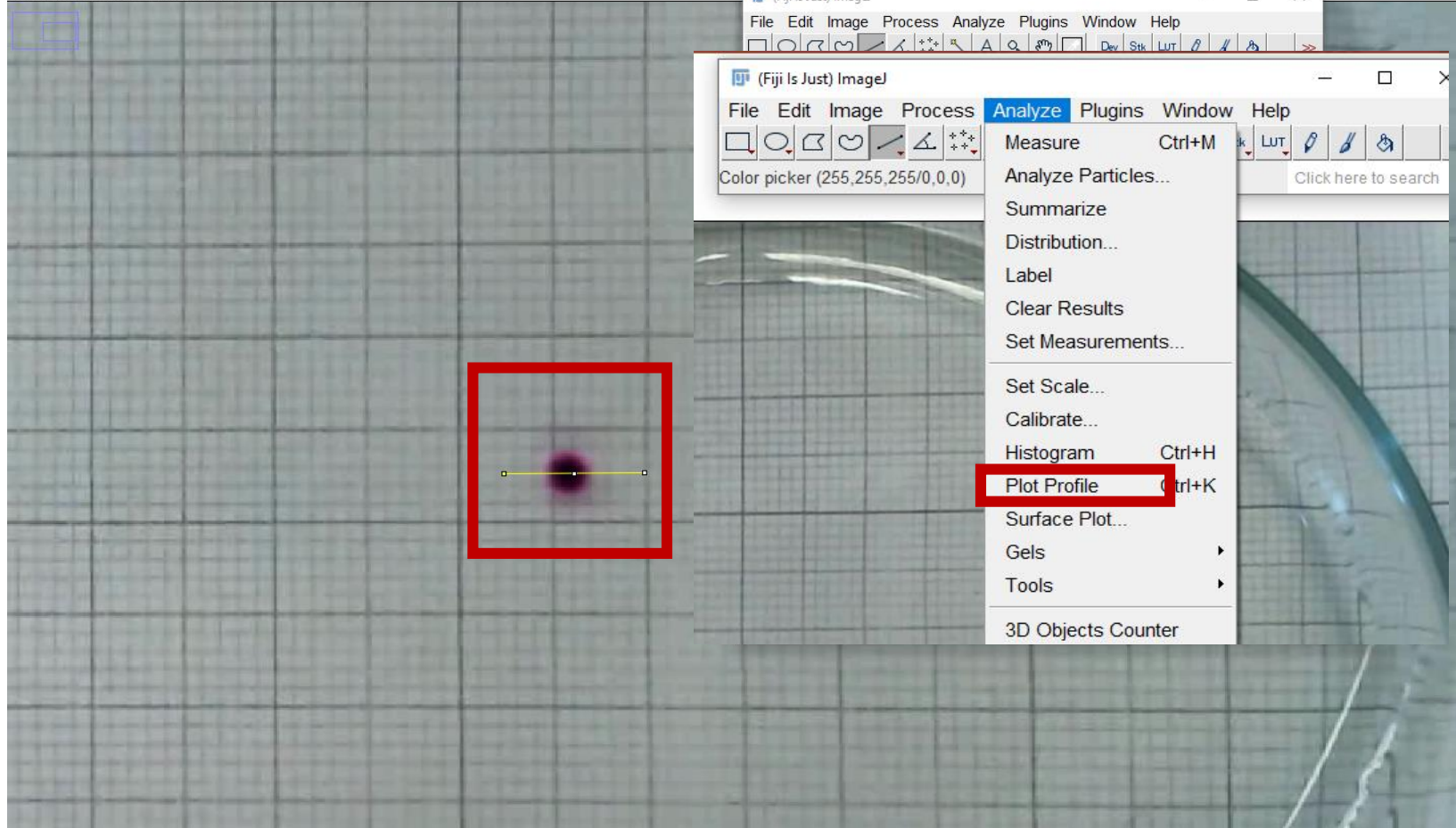
scene00101.png (75%)
158.82x90.00 mm (1920x1088); RGB; 8MB

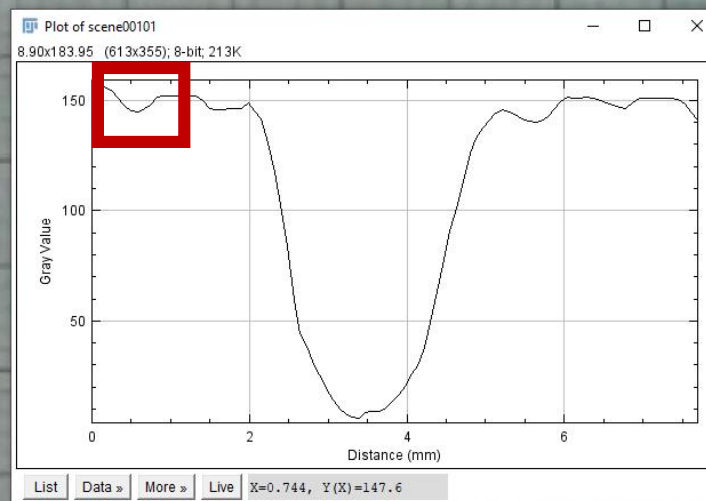
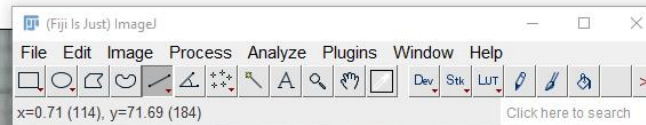


scene00101.png (75%)
158.82x90.00 mm (1920x1088); RGB; 8MB



scene00101.png (150%)
58.82x90.00 mm (1920x1088); RGB; 8MB





Add Fit

Fit Data Set: Data Set 1: (167 data points)

Fit Function: Gaussian

Color: blue

Secondary (fill) color: #a0a0ff

Line width: 1.0

Symbol: Line

Label: Fit Gaussian

☒ Visible

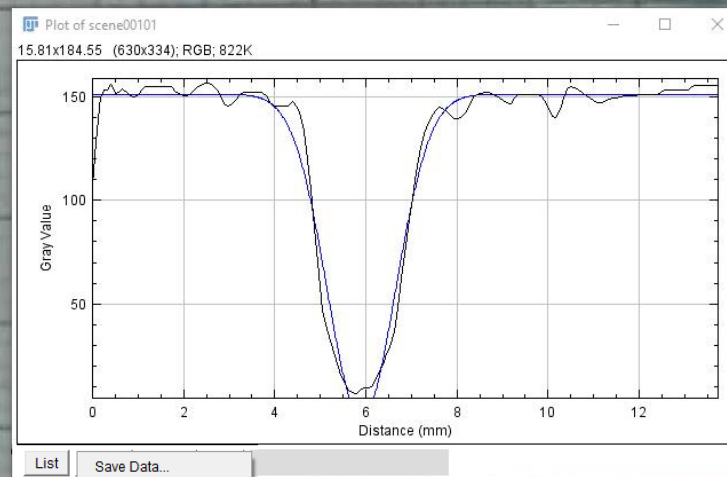
OK Cancel

(Fiji Is Just) ImageJ

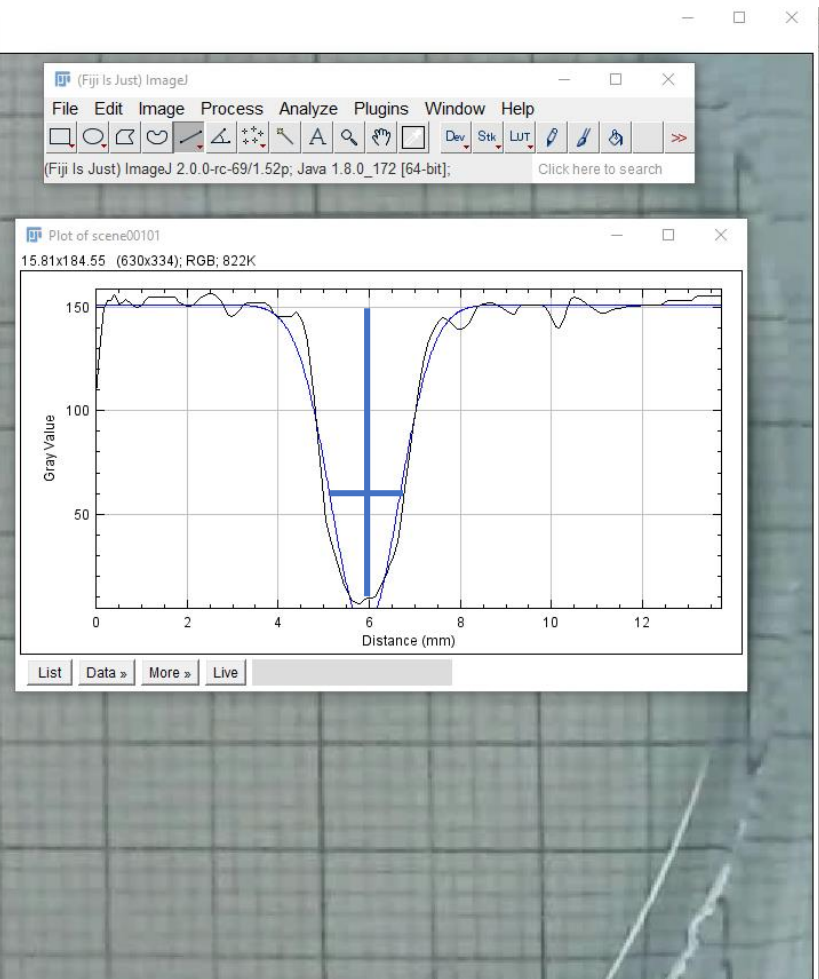
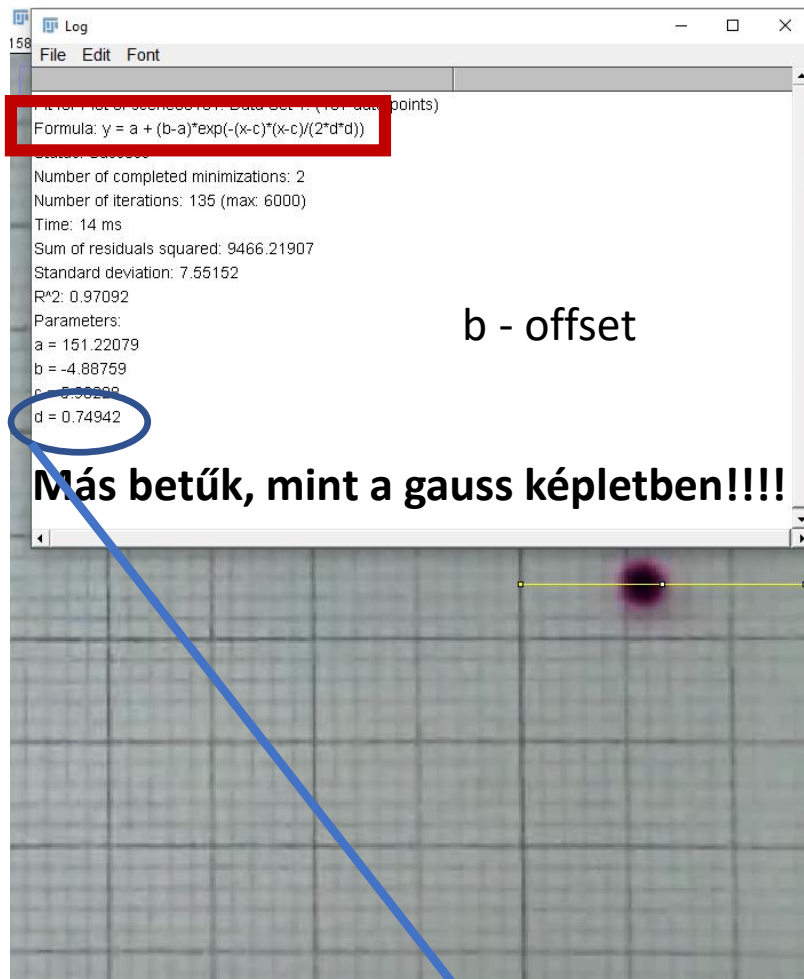
File Edit Image Process Analyze Plugins Window Help

Fit: Success, sum residuals *2 = 9466.219

[Click here to search](#)



- List
- Save Data...
 - Copy 1st Data Set
 - Copy All Data
 - Add from Table...
 - Add from Plot...
 - Add Fit...



A Fiji által kiírt utolsó szám a c amit be kell helyettesíteni

$$FWHM = 2\sqrt{2 \ln 2} c \approx 2,35482c$$

Tehát a jelen számolás alapján $\rightarrow FWHM = 2,35482 \cdot 0,74942 = 1,765 \text{ mm}$



Plot Values				
File Edit Font				
X0	Y0	X1	Y1	
0.0000	107.222	0.0000	151.221	
0.0827	128.111	0.0137	151.221	
0.1654	149.667	0.0275	151.221	
0.2482	153.333	0.0412	151.221	
0.3309	153.111	0.0550	151.221	
0.4136	155.889	0.0687	151.221	
0.4963	151.667	0.0825	151.221	
0.5790	152.111	0.0962	151.221	
0.6617	153.667	0.1100	151.221	
0.7445	152.259	0.1237	151.221	
0.8272	150.296	0.1374	151.221	
0.9099	149.667	0.1512	151.221	
0.9926	150.926	0.1649	151.221	
1.0753	152.963	0.1787	151.221	
1.1581	154.630	0.1924	151.221	
1.2408	154.741	0.2062	151.221	
1.3235	154.556	0.2199	151.221	
1.4062	154.556	0.2337	151.221	
1.4889	154.556	0.2474	151.221	

